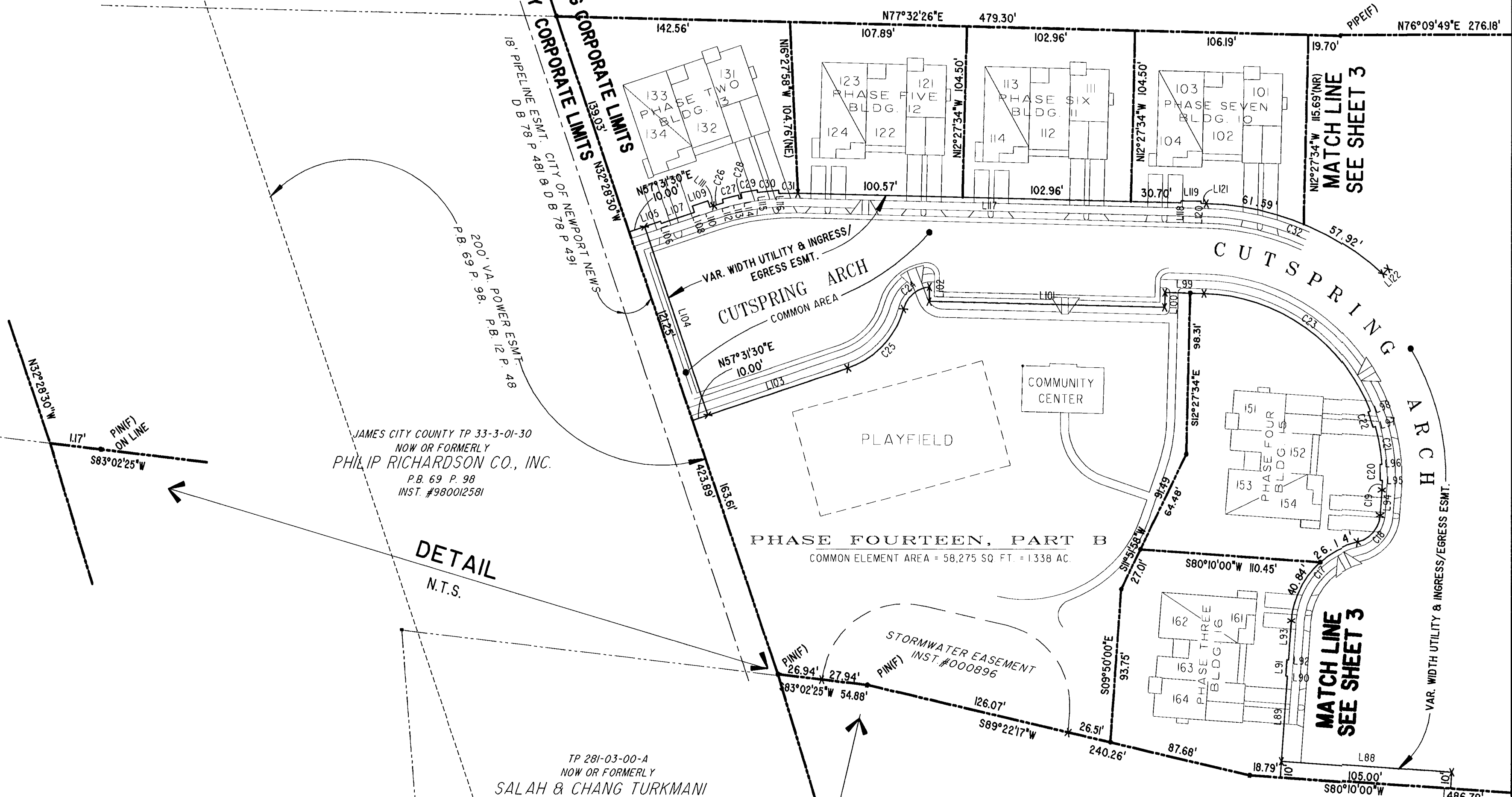


JAMES CITY COUNTY TP 33-3-01-27  
NOW OR FORMERLY  
ARTCRAFT - STRATFORD, L.C.  
D.B. 649 P. 470

CITY OF WILLIAMSBURG CORPORATE LIMITS  
JAMES CITY COUNTY CORPORATE LIMITS



JAMES CITY COUNTY TP 33-3-01-30  
NOW OR FORMERLY  
PHILIP RICHARDSON CO., INC.  
P.B. 69 P. 98  
INST. #980012581

TP 281-03-00-A  
NOW OR FORMERLY  
SALAH & CHANG TURKMANI  
D.B. 94 P. 92

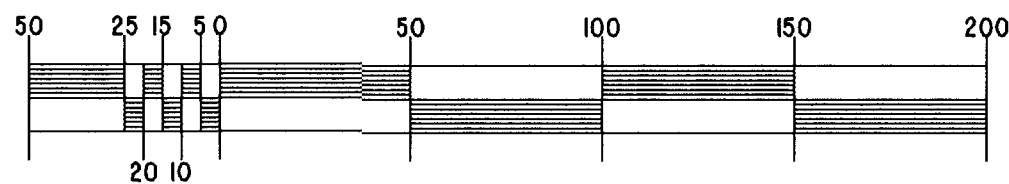
TP 281-10-00-B  
NOW OR FORMERLY  
752 L.L.C.  
INST. #980305

TP 282-08-00-001  
NOW OR FORMERLY  
752 L.L.C.  
INST. #980305

DETAIL  
N.T.S.

DETAIL  
N.T.S.

GRAPHIC SCALE: 1" = 50'



City of Williamsburg & County of James City  
Circuit Court: This PLAT was recorded on  
29 August 2003  
at 3:25 AM/PM, P.B. 91 PG 44-48  
DOCUMENT # 031942  
BETSY B. WOOLRIDGE, CLERK  
*Betsy B. Woolridge* Clerk

EXHIBIT "A"  
CLAIBORNE  
(A CONDOMINIUM COMMUNITY)  
PHASE SEVENTEEN

Hassell & Folkes, P.C. Engineers Surveyors Planners Chesapeake, VA. 23320 (757) 547-9531	SIZE C	CONTRACT NO	FILE NAME S:\PLATS\CLAIBORNE\PH-15-81.DG-22.DWG	REV.
	SCALE: 1" = 50'	DATE: 08/18/03	SHEET 4	of 5