

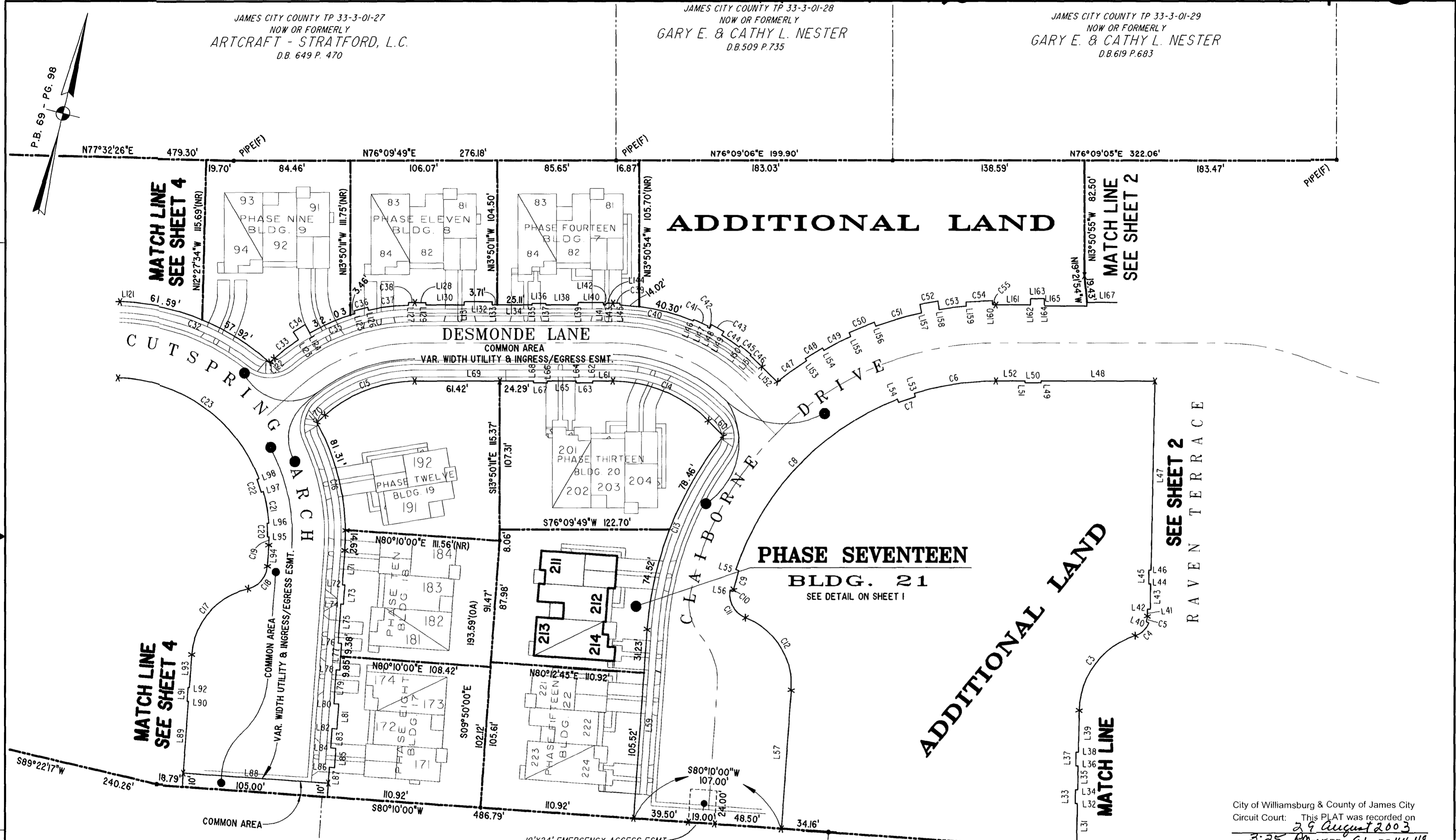
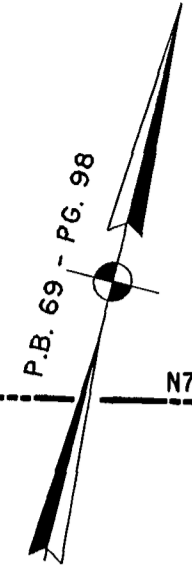
#031942

91 PAGE 46

JAMES CITY COUNTY TP 33-3-01-27  
NOW OR FORMERLY  
ARTCRAFT - STRATFORD, L.C.  
D.B. 649 P. 470

JAMES CITY COUNTY TP 33-3-01-28  
NOW OR FORMERLY  
GARY E. & CATHY L. NESTER  
D.B. 509 P. 735

JAMES CITY COUNTY TP 33-3-01-29  
NOW OR FORMERLY  
GARY E. & CATHY L. NESTER  
D.B. 619 P. 683



ADDITIONAL LAND

ADDITIONAL LAND

PHASE SEVENTEEN  
BLDG. 21  
SEE DETAIL ON SHEET I

MATCH LINE  
SEE SHEET 4

MATCH LINE  
SEE SHEET 4

MATCH LINE  
SEE SHEET 2

SEE SHEET 2

MATCH LINE

TP 281-10-00-B  
NOW OR FORMERLY  
752 L.L.C.  
INST. #980305

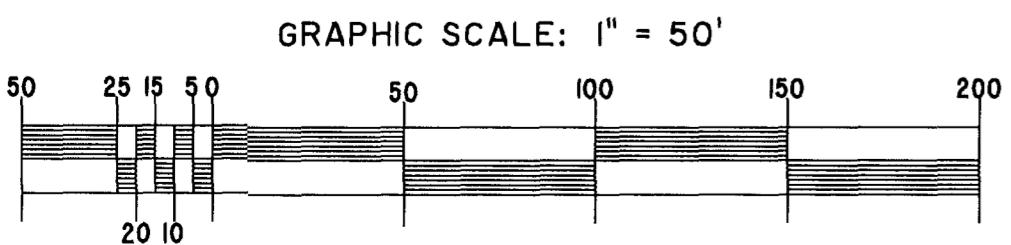
TP 282-08-00-001  
NOW OR FORMERLY  
752 L.L.C.  
INST. #980305

TP 281-10-00-B  
NOW OR FORMERLY  
752 L.L.C.  
INST. #980305

TP 282-08-00-001  
NOW OR FORMERLY  
752 L.L.C.  
INST. #980305

City of Williamsburg & County of James City  
Circuit Court: This PLAT was recorded on  
29 August 2003  
at 3:25 PM in Book 91 PG 44-48  
DOCUMENT # 031942  
BETSY B. WOOLRIDGE, CLERK

EXHIBIT "A"  
CLAIBORNE  
(A CONDOMINIUM COMMUNITY)  
PHASE SEVENTEEN



Hassell & Folkes, P.C. Engineers Surveyors Planners Chesapeake, VA 23320 (757) 547-9531	SIZE	CONTRACT NO	FILE NAME	REV.
	C		S:\PLATS\CLAIBORNE\PH-15-BLDG-22.DWG	
SCALE: 1" = 50'		DATE: 08/18/03	SHEET 3 of 5	

A-1520

A-1520