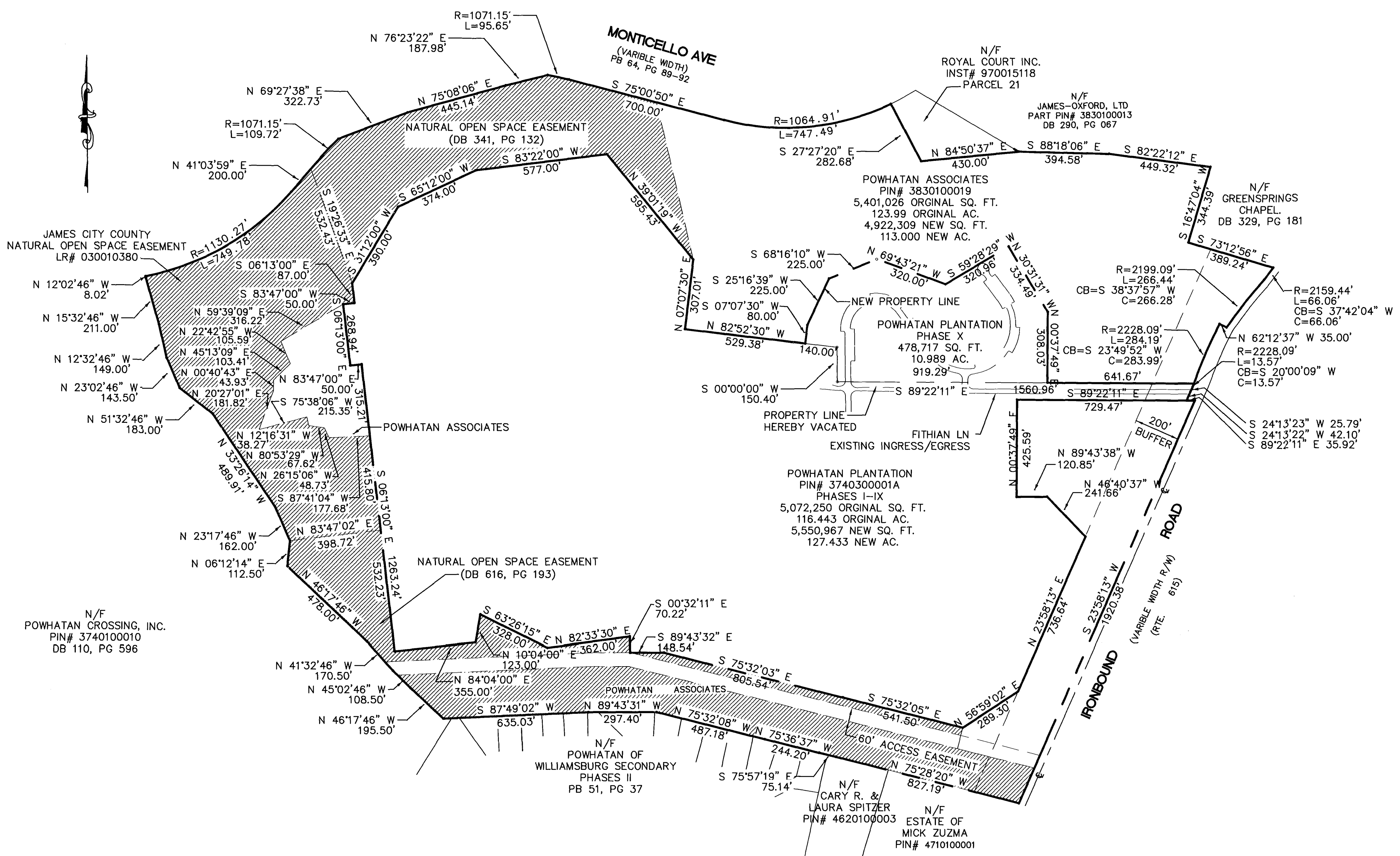
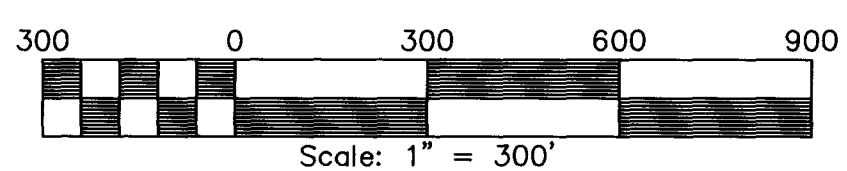


SUBDIVISION PLAT POWHATAN PLANTATION PHASE X

BERKELEY DISTRICT
JAMES CITY COUNTY, VIRGINIA



City of Williamsburg & County of James City
Circuit Court: This PLAT was recorded on
21 August 2003
at 10:55 AM/PM PB 91 PG 30931
DOCUMENT # 130024746
BETSY B. WOOLRIDGE, CLERK
Betsy B. Woolridge Clerk



REVISED AS PER COUNTY COMMENTS DATED 7/7/2003

SHEET 2 OF 2

Rickmond Engineering, Inc.
Engineering Surveying Land Planning
1643 Merrimac Trail Vint Hill • P.O. Box 861647
Williamsburg, VA 23185 Warrenton, VA 20187
Voice: (757)229-1776 Voice: (540)349-7730
Fax: (757)229-4683 Fax: (540)349-7731
www.rickmond.com

Checked By: LDE	Drawn By: MCG	Scale: 1"=300'	Date: 5/14/03
		Job No. 03159	