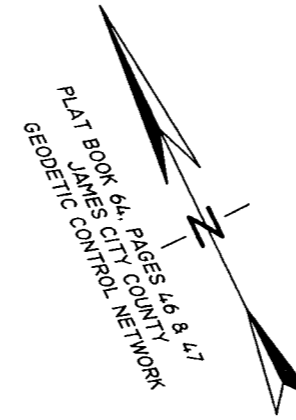
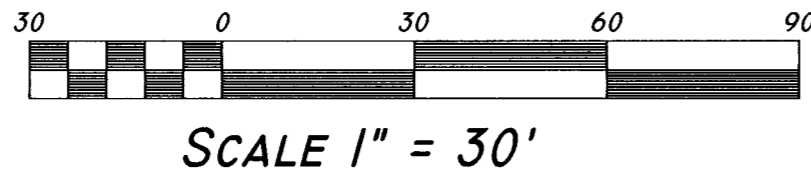
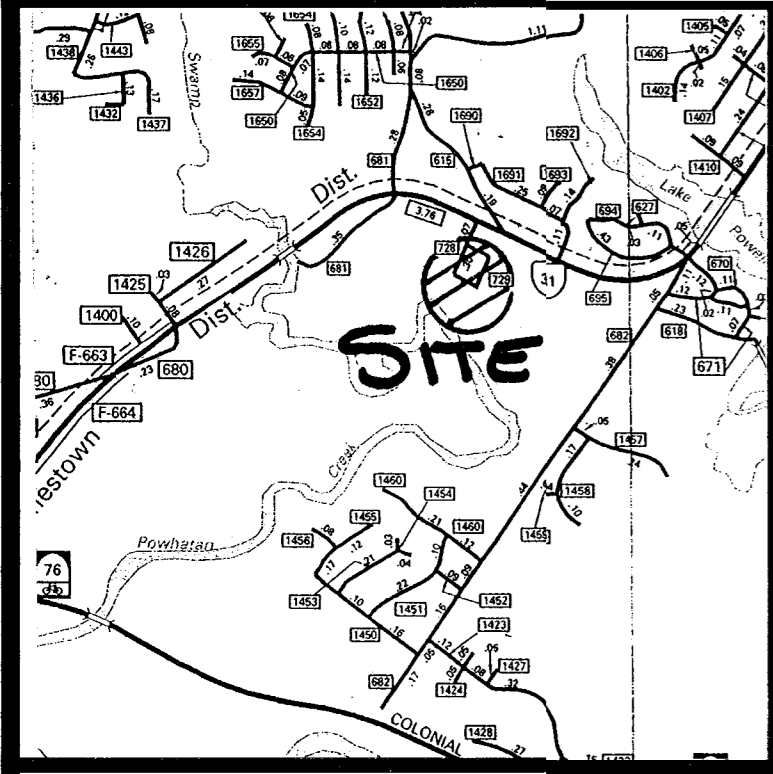


#030023527

91 PAGE 28



PLAT DESIGNATING PORTIONS OF RED OAK LANDING ROAD AND RALEIGH STREET AS PUBLIC RIGHT-OF-WAY

LOCATED: JAMESTOWN DISTRICT, JAMES CITY COUNTY, VIRGINIA DATE: JULY 14, 2003 SCALE: 1" = 30'

MITCHELL-WILSON ASSOCIATES, P.C. CIVIL ENGINEERS & LAND SURVEYORS 720 MAIN STREET, SUITE 112 P.O. BOX 1269 WEST POINT, VIRGINIA 23181 (804) 843-9744

VICINITY MAP

N/F LOT 2 CHARLES S. FOLEY & DONNA S. FOLEY SUBDIVISION (47-3)(1-31A) PB. 36, PG. 22 SAMUEL L. HODGES, JR. DB. 213, PG. 78

STATE ROUTE 728

ALBERMARLE DRIVE 50' R/W STATE ROUTE 729

N/F NATURAL OPEN SPACE-CONSERVATION EASEMENT HOLLY RIDGE SUBDIVISION (47-3)(23-1A) HOLLY RIDGE HOME ASSOCIATION DOC. #980020463 PB. 64, PGS. 46-47

N/F LOT 1 CHARLES S. FOLEY & DONNA S. FOLEY SUBDIVISION (47-3)(1-31) WILLIAM W. FISHER, II DB. 552, PG. 86

N/F LOT 18 CALEB M. BRICKHOUSE (47-3)(3-18) DB. 170, PG. 675 DB. 96, PG. 41

N/F LOT 17 EARL M. HEATH, JR. (47-3)(3-17) DB. 646, PG. 71 DB. 136, PG. 406

N/F LOT 16 ROBERT A. BARRY (47-3)(3-16) DB. 174, PG. 652 DB. 104, PG. 172

N/F LOT 15 P&W COMPANY (47-3)(3-15) DB 399, PG 732

RALEIGH STREET

RED OAK LANDING ROAD

N/F THOMAS C. & JOANNA C. TURBEVILLE (47-3)(1-33) DB. 742, PG. 676 DB. 84, PG. 90

N/F PARCEL B (47-3)(1-34) WILLIAM E. HEWITT & ANN J. HEWITT DB. 496, PG. 112 PB. 52, PG. 42

N/F PARCEL A (47-3)(1-35) EDWIN LINN THOMS DOC. # 990012437 PB. 52, PG. 42

N/F CHARLES R. WEIR (47-3)(3-15A) DB 607, PG 219

CURVE DATA:

C2	DELTA = 91°17'57"	C3	DELTA = 90°00'00"
	RADIUS = 25.00'		RADIUS = 25.00'
	LENGTH = 39.83'		LENGTH = 39.27'
	TAN. = 25.57'		TAN. = 25.00'
	CHORD = 35.75'		CHORD = 35.36'
CB	= N71°28'54"E	CB	= S19°00'54"E

City of Williamsburg & County of James City Circuit Court: This PLAT was recorded on 7 August 2003 at 2:12 AM PM, PB 91 PG 28 DOCUMENT # 030023527 BETSY B. WOOLRIDGE, CLERK

N/F PARCEL "A" (47-3)(9-1-4) RALEIGH SQUARE CONDOMINIUMS, INC. DB. 243, PG. 841

