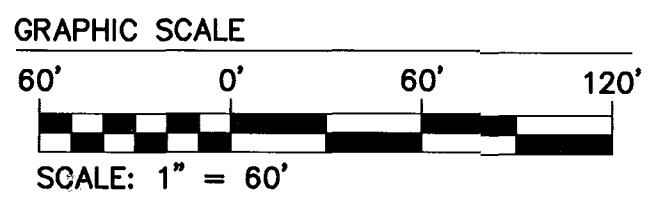
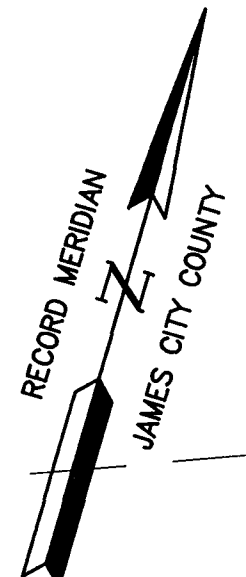


888108P04.dwg
06.03.03-11:26
JFS



TAX PARCEL (23-4)(1-22)
TAX PARCEL (23-4)(1-21)

COMMON OPEN SPACE (COS)

NO.	SQ.FT.	ACRES
COS 1	3,397 SQ.FT.	0.08 AC.
COS 2	541,814 SQ.FT.	12.44 AC.

R/W CURVE TABLE

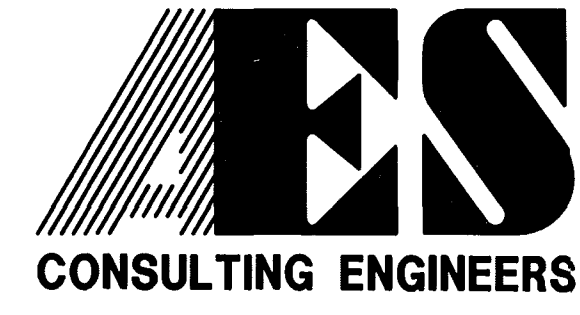
NO.	DELTA	RADIUS	LENGTH	TANGENT	CHORD	CH. BEARING
C1	58°32'29"	305.00	311.62	170.95	298.25	N76°50'46"W
C2	83°45'15"	205.00	299.68	183.79	273.69	S32°00'23"W
C3	257°03'27"	45.00	201.89	70.41	70.41	N76°03'05"E
C4	78°31'52"	155.00	212.45	126.71	196.20	N34°37'05"E
C5	58°32'28"	255.00	260.54	142.93	249.36	S76°50'46"E

LOT CURVE TABLE

LOT	DELTA	RADIUS	LENGTH	TANGENT	CHORD	CH. BEARING
6	8°58'48"	305.00	47.80	23.95	47.75	S52°03'56"E
7	10°40'27"	305.00	56.82	28.49	56.74	S61°53'33"E
8	11°28'22"	305.00	61.07	30.64	60.97	S72°57'58"E
9	11°28'22"	305.00	61.07	30.64	60.97	S84°26'19"E
10	11°28'22"	305.00	61.07	30.64	60.97	N84°05'19"E
11	4°23'08"	305.00	23.79	11.90	23.78	N76°07'04"E
18	9°23'57"	205.00	33.63	16.85	33.59	N69°11'01"E
19	16°41'21"	205.00	59.71	30.07	59.50	N56°08'22"E
20	16°36'37"	205.00	59.43	29.92	59.22	N39°29'24"E
21	16°36'37"	205.00	59.43	29.92	59.22	N22°52'47"E
22	15°58'20"	205.00	57.15	28.76	56.96	N06°35'18"E
23A	8°28'23"	205.00	30.32	15.19	30.29	N05°38'03"W
23B	34°27'03"	45.00	27.06	13.95	26.65	S07°21'17"W
24	72°38'11"	45.00	57.05	33.08	53.30	N11°44'17"W
25	53°46'45"	45.00	42.24	22.82	40.70	N74°56'46"W

LOT CURVE TABLE (CONT'D)

LOT	DELTA	RADIUS	LENGTH	TANGENT	CHORD	CH. BEARING
26	53°18'49"	45.00	41.87	22.59	40.38	S51°30'27"W
27	56°51'10"	45.00	44.65	24.36	42.84	S03°34'33"E
28A	20°28'30"	45.00	16.08	8.13	16.00	S42°14'23"E
28B	47°49'47"	45.00	37.57	19.96	36.48	N28°33'44"W
28C	26°51'40"	155.00	72.67	37.01	72.00	N08°46'59"E
29	34°07'46"	155.00	92.33	47.58	90.97	N39°16'42"E
30	17°32'25"	155.00	47.45	23.91	47.27	N65°06'47"E
38	16°44'55"	255.00	74.54	37.54	74.28	N82°15'27"E
39	18°39'55"	255.00	83.07	41.91	82.70	S80°02'08"E
40	18°25'08"	255.00	81.97	41.34	81.62	S61°29'36"E
41	4°42'30"	255.00	20.96	10.48	20.95	S49°55'47"E
42A	97°10'54"	25.00	42.40	28.35	37.50	S01°00'53"W
42B	14°04'02"	425.00	104.35	52.44	104.08	S56°38'20"W



5248 Olde Towne Road, Suite 1
Williamsburg, Virginia 23188
(757) 253-0040
Fax (757) 220-8994

PLAT OF SUBDIVISION
COLONIAL HERITAGE
PHASE ONE, SECTION TWO
LOTS 1-89
PREPARED FOR COLONIAL HERITAGE LLC

STONEHOUSE DISTRICT JAMES CITY COUNTY VIRGINIA



City of Williamsburg & County of James City
Circuit Court: This PLAT was recorded on 16 August 2003
at 2:51 AM/PM, PB 91 PG20-24
DOCUMENT # 030023467
BETSY B. WOOLRIDGE, CLERK
Betsy B. Woolridge Clerk

No.	DATE	REVISION / COMMENT / NOTE	BY
1	5/20/03	REVISED PER COUNTY COMMENTS	JFS

Designed	Drawn
AES	RMS
Scale	Date
1"=60'	3/31/03
Project No.	
8881-08	
Drawing No.	
4 OF 5	