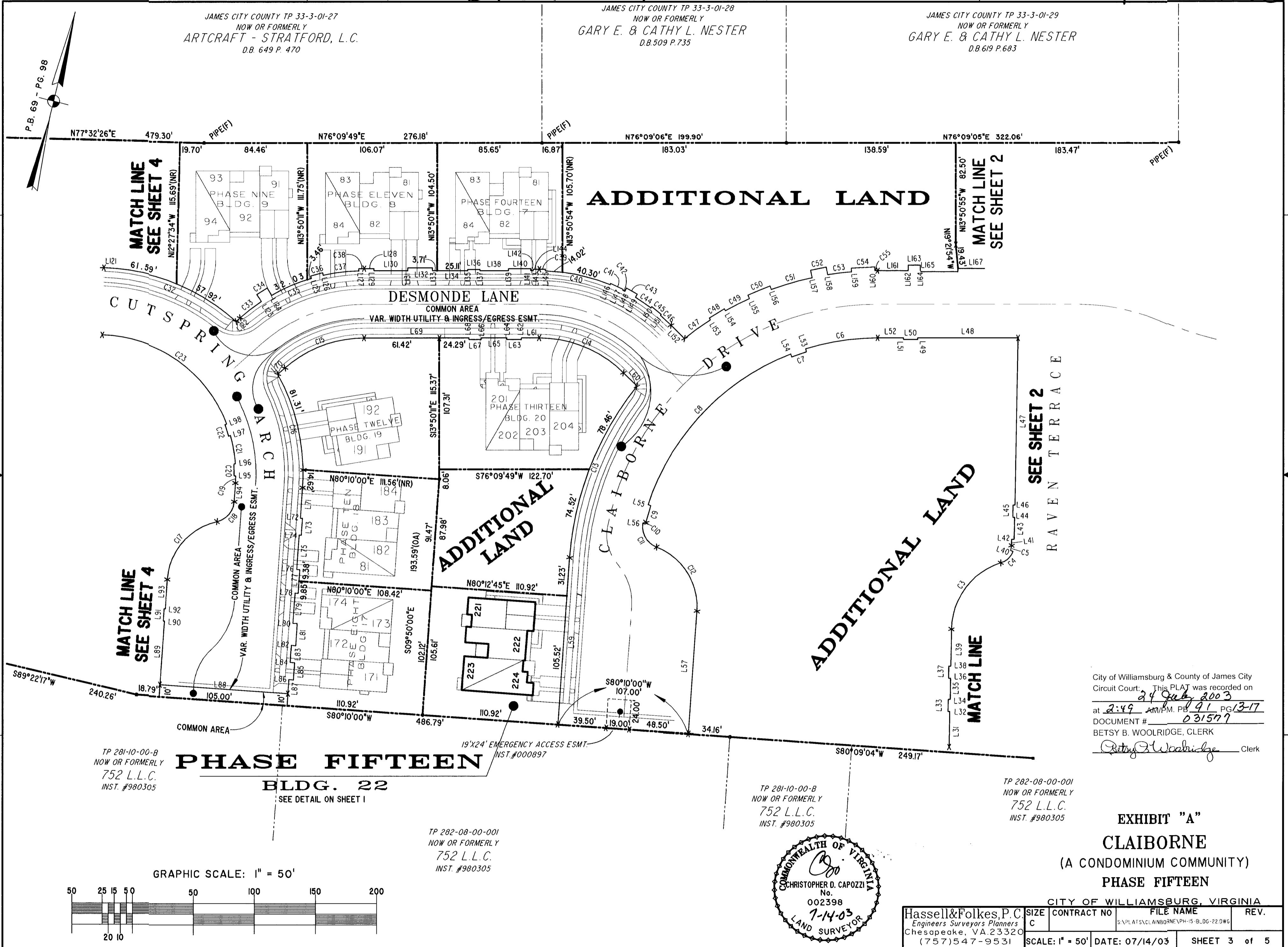
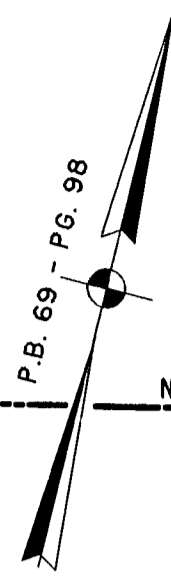


JAMES CITY COUNTY TP 33-3-01-27
NOW OR FORMERLY
ARTCRAFT - STRATFORD, L.C.
D.B. 649 P. 470

JAMES CITY COUNTY TP 33-3-01-28
NOW OR FORMERLY
GARY E. & CATHY L. NESTER
D.B. 509 P. 735

JAMES CITY COUNTY TP 33-3-01-29
NOW OR FORMERLY
GARY E. & CATHY L. NESTER
D.B. 619 P. 683



MATCH LINE
SEE SHEET 4

MATCH LINE
SEE SHEET 2

SEE SHEET 2
RAVEN TERRACE

MATCH LINE

TP 281-10-00-B
NOW OR FORMERLY
752 L.L.C.
INST. #980305

PHASE FIFTEEN
BLDG. 22
SEE DETAIL ON SHEET I

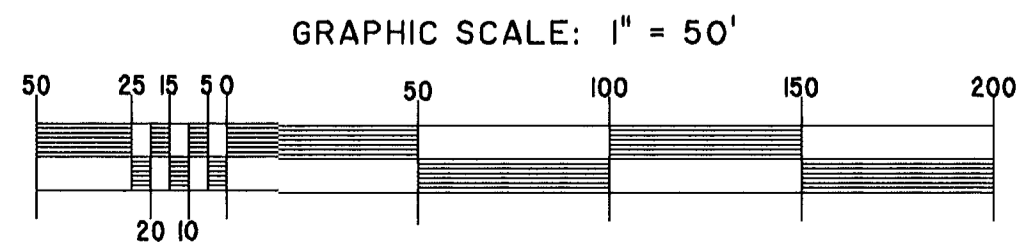
TP 282-08-00-001
NOW OR FORMERLY
752 L.L.C.
INST. #980305

TP 281-10-00-B
NOW OR FORMERLY
752 L.L.C.
INST. #980305

TP 282-08-00-001
NOW OR FORMERLY
752 L.L.C.
INST. #980305

City of Williamsburg & County of James City
Circuit Court. This PLAT was recorded on
24 July 2003
at 2:49 AM/PM. PB 91 PG 13-17
DOCUMENT # 031577
BETSY B. WOOLRIDGE, CLERK
Betsy B. Woolridge Clerk

EXHIBIT "A"
CLAIBORNE
(A CONDOMINIUM COMMUNITY)
PHASE FIFTEEN



Hassell & Folkes, P.C. Engineers Surveyors Planners Chesapeake, VA 23320 (757) 547-9531		SIZE C	CONTRACT NO	FILE NAME S:\PLATS\CLAIBORNE\PH-15-BLDG-22.DWG	REV.
SCALE: 1" = 50'	DATE: 07/14/03	SHEET 3 of 5			