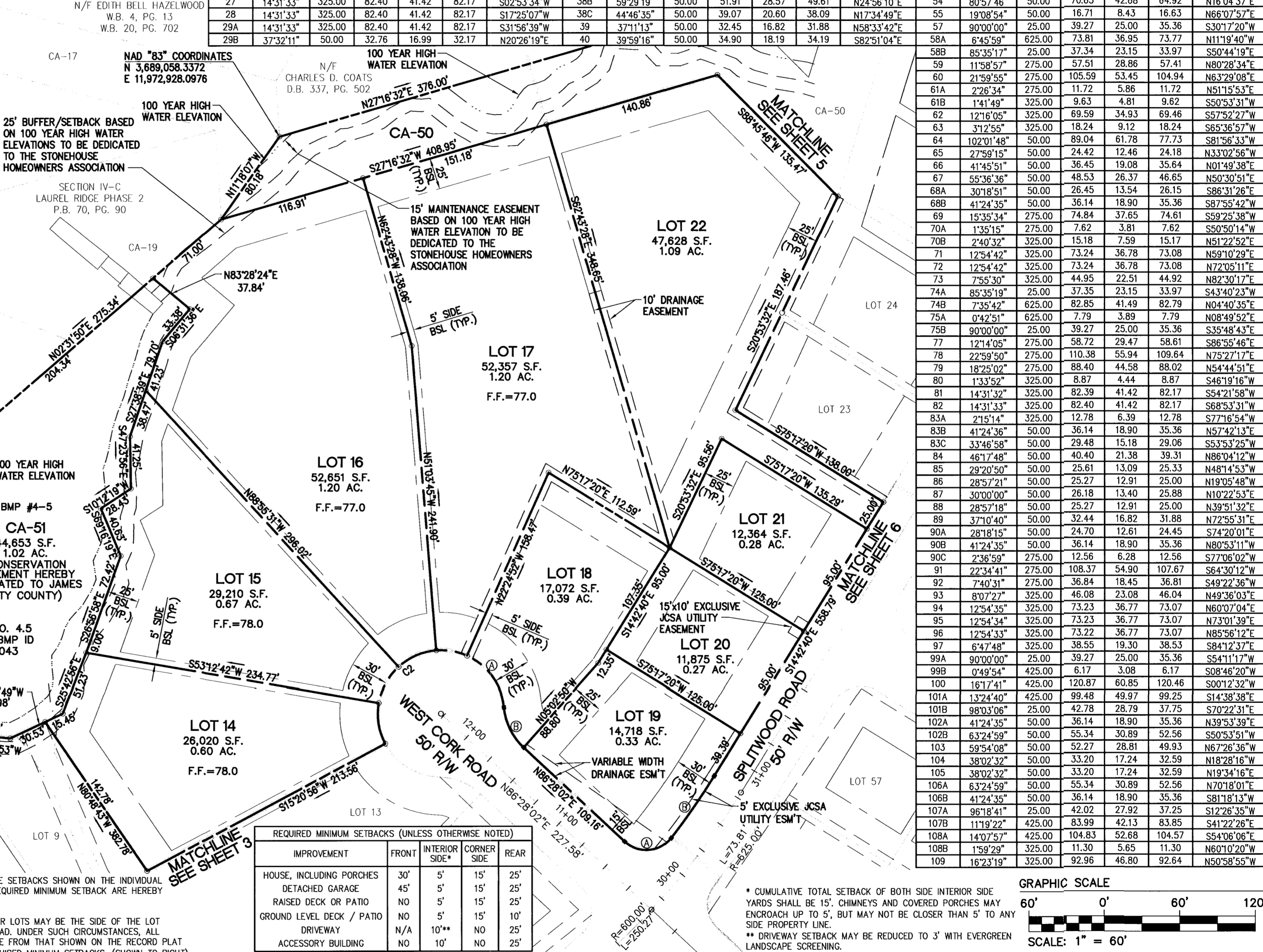


NOTES:  
 1. COMMON AREAS AS SHOWN ARE TO BE DEDICATED TO THE STONEHOUSE HOMEOWNERS ASSOCIATION.  
 2. IN ACCORDANCE WITH SECTION 19-29(H) OF THE JAMES CITY COUNTY ZONING ORDINANCE THE NATURAL OPEN SPACE EASEMENTS SHALL REMAIN IN A NATURAL UNDISTURBED STATE EXCEPT FOR THOSE ACTIVITIES REFERENCED IN THE DEED OF EASEMENT.

LOT CURVE TABLE						LOT	DELTA	RADIUS	ARC	TANGENT	CHORD	CHORD BEARING	LOT	DELTA	RADIUS	ARC	TANGENT	CHORD	CHORD BEARING	LOT	DELTA	RADIUS	ARC	TANGENT	CHORD	CHORD BEARING
1	18°22'48"	275.00	88.22	44.49	87.84	13B	60°17'29"	50.00	52.61	29.04	50.22	N75°12'11"E	31	43°24'10"	50.00	37.88	19.90	36.98	N89°58'23"W	42	39°59'16"	50.00	34.90	18.19	34.19	N42°51'48"W
2	11°03'40"	475.00	91.70	45.99	91.56	14	37°51'46"	50.00	33.04	17.15	32.44	S55°43'11"E	32	56°49'19"	50.00	49.59	27.05	47.58	N39°51'38"W	43	36°52'23"	50.00	32.18	16.67	31.63	N35°33'17"E
3	10°40'32"	475.00	88.50	44.38	88.37	15	37°51'47"	50.00	33.04	17.15	32.44	S17°51'25"E	33A	95°29'48"	50.00	83.34	55.04	74.02	N36°17'56"E	45	7°48'28"	325.00	44.29	22.18	44.25	N59°04'59"E
4	10°01'48"	475.00	83.15	41.68	83.05	16	37°51'46"	50.00	33.04	17.15	32.44	S20°00'22"W	33B	47°16'52"	50.00	41.26	21.89	40.10	S60°24'22"W	46	12°18'07"	325.00	69.78	35.02	69.65	N69°08'17"E
5	10°28'24"	475.00	86.83	43.54	86.71	17	28°38'53"	50.00	25.00	12.77	24.74	S53°15'41"W	33C	9°08'16"	275.00	43.86	21.98	43.81	S32°11'47"W	48	90°00'00"	25.00	39.27	25.00	35.36	S30°17'20"W
6	8°22'27"	475.00	69.42	34.77	69.36	18A	60°17'28"	50.00	52.61	29.04	50.22	N82°16'08"W	34	24°48'02"	275.00	119.03	60.46	118.11	S15°13'38"W	50	90°00'00"	25.00	39.27	25.00	35.36	S59°42'40"E
7	9°43'54"	475.00	80.68	40.44	80.58	18B	41°24'35"	50.00	36.14	18.90	35.36	S72°49'41"E	35A	17°32'17"	275.00	84.18	42.42	83.85	S05°56'32"E	51A	59°59'57"	50.00	52.36	28.87	50.00	N45°17'21"E
8	10°00'36"	475.00	82.99	41.60	82.88	19A	95°12'55"	25.00	41.55	27.39	36.93	N38°51'34"E	35B	90°00'00"	25.00	39.27	25.00	35.36	S59°42'39"E	51B	60°58'54"	50.00	53.22	29.44	50.74	S45°46'50"W
12A	7°30'18"	575.00	75.32	37.71	75.26	19B	5°57'45"	575.00	59.84	29.95	59.81	N11°43'48"W	37	14°55'08"	275.00	71.61	36.01	71.40	N67°49'46"E	52	50°11'53"	50.00	43.81	23.42	42.42	N78°37'47"W
12B	95°12'56"	25.00	41.55	27.39	36.93	26	10°20'28"	325.00	58.66	29.41	58.58	S09°32'26"E	38A	5°41'22"	275.00	27.31	13.66	27.30	N57°31'31"E	53	29°07'34"	50.00	25.42	12.99	25.14	N38°58'03"W
						27	14°31'33"	325.00	82.40	41.42	82.17	S02°53'34"W	38B	59°29'19"	50.00	51.91	28.57	49.61	N24°56'10"E	54	80°57'46"	50.00	70.65	42.68	64.92	N16°04'37"E
						28	14°31'33"	325.00	82.40	41.42	82.17	S17°25'07"W	38C	44°46'35"	50.00	39.07	20.60	38.09	N17°34'49"E	55	19°08'54"	50.00	16.71	8.43	16.63	N66°07'57"E
						29A	14°31'33"	325.00	82.40	41.42	82.17	S31°56'39"W	39	37°11'13"	50.00	32.45	16.82	31.88	N58°33'42"E	57	90°00'00"	25.00	39.27	25.00	35.36	S30°17'20"W
						29B	37°32'11"	50.00	32.76	16.99	32.17	N20°26'19"E	40	39°59'16"	50.00	34.90	18.19	34.19	S82°51'04"E	58A	6°45'59"	625.00	73.81	36.95	73.77	N11°19'40"W

RIGHT-OF-WAY CURVE TABLE						
CURVE	DELTA	RADIUS	ARC	TANGENT	CHORD	CHORD BEARING
C1	70°21'21"	475.00	583.27	334.80	547.31	S25°59'24"E
C2	262°49'09"	50.00	229.35	56.69	-	S03°31'58"E
C3	53°55'05"	325.00	305.84	165.30	294.68	S12°14'53"W
C4	262°22'35"	50.00	228.97	57.14	-	N47°08'29"W
C5	51°28'35"	275.00	247.07	132.57	238.84	S11°01'37"W
C6	20°36'30"	275.00	98.91	50.00	98.38	N64°59'05"E
C7	238°47'58"	50.00	208.39	88.74	-	N65°24'30"W
C8	20°06'35"	325.00	114.07	57.63	113.48	N65°14'02"E
C9	240°25'01"	50.00	209.80	85.88	-	N44°30'06"W
C10	36°25'26"	275.00	174.82	90.48	171.89	N68°15'19"E
C11	17°10'49"	325.00	97.45	49.09	97.09	S58°38'01"W
C12	41°24'35"	50.00	36.14	18.90	35.36	S46°31'08"W
C13	262°49'10"	50.00	229.35	56.69	-	N22°46'35"W
C14	17°10'49"	275.00	82.46	41.54	82.15	S58°38'01"W
C15	36°25'25"	325.00	206.61	106.93	203.15	N68°15'19"E
C16	8°18'33"	625.00	90.64	45.40	90.56	N05°02'00"E
C17	53°38'57"	275.00	257.50	139.06	248.19	N72°21'49"E
C18	32°52'11"	325.00	186.45	95.87	183.90	S61°58'26"W
C19	262°49'09"	50.00	229.35	56.69	-	N11°35'29"W
C20	32°52'11"	275.00	157.76	81.12	155.61	S61°58'26"W
C21	53°38'57"	325.00	304.32	164.34	293.32	N72°21'49"E
C22	30°32'15"	425.00	226.52	116.02	223.84	S06°04'50"E
C23	262°49'10"	50.00	229.35	56.69	-	N29°24'04"W
C24	25°27'19"	425.00	188.82	95.99	187.27	S48°26'25"E
C25	18°22'48"	325.00	104.26	52.58	103.81	N51°58'40"W



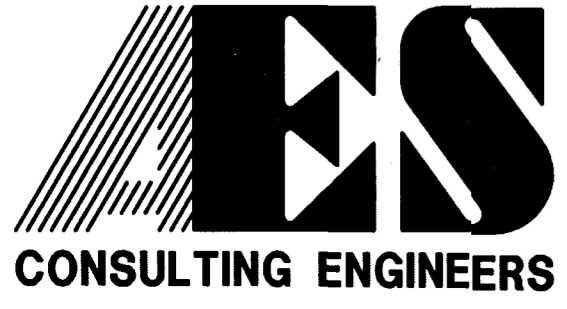
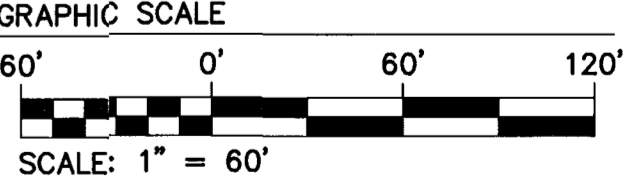
City of Williamsburg & County of James City  
 Circuit Court, This Plan was recorded on  
 at 3:24 AM/PA, PB 01 PG 8-9  
 DOCUMENT # 030021747  
 Betsy B. Woolridge, Clerk

NAD 83 COORDINATES  
 N 3,688,704.6418  
 E 11,972,931.6363

N/F THE TRADITION GOLF CLUB  
 AT STONEHOUSE LLC  
 DOCUMENT #010010551

REQUIRED MINIMUM SETBACKS (UNLESS OTHERWISE NOTED)				
IMPROVEMENT	FRONT	INTERIOR SIDE*	CORNER SIDE	REAR
HOUSE, INCLUDING PORCHES	30'	5'	15'	25'
DETACHED GARAGE	45'	5'	15'	25'
RAISED DECK OR PATIO	NO	5'	15'	25'
GROUND LEVEL DECK / PATIO	NO	5'	15'	10'
DRIVEWAY	N/A	10**	NO	25'
ACCESSORY BUILDING	NO	10'	NO	25'

\* CUMULATIVE TOTAL SETBACK OF BOTH SIDE INTERIOR SIDE YARDS SHALL BE 15'. CHIMNEYS AND COVERED PORCHES MAY ENCROACH UP TO 5', BUT MAY NOT BE CLOSER THAN 5' TO ANY SIDE PROPERTY LINE.  
 \*\* DRIVEWAY SETBACK MAY BE REDUCED TO 3' WITH EVERGREEN LANDSCAPE SCREENING.



5248 Olde Towne Road, Suite 1  
 Williamsburg, Virginia 23188  
 (757) 253-0040  
 Fax (757) 220-8994

PLAT OF SUBDIVISION  
 SECTION V-A "LISBURN"  
 AT STONEHOUSE  
 FOR  
**STONEHOUSE**  
 G.C.R., INC.  
 STONEHOUSE DISTRICT JAMES CITY COUNTY VIRGINIA



No.	DATE	REVISION / COMMENT / NOTE	BY
1	2/14/03	REVISED EASEMENT ON LOT 19 PER J.C.C. COMMENT LETTER DATED 2/10/03	AWT

Designed	Drawn
VMB	AWT
Scale	Date
1"=60'	12/3/02
Project No.	
9088	
Drawing No.	
4 OF 7	