

P.B. 69 P. 98

JAMES CITY COUNTY TP 33-3-01-27
NOW OR FORMERLY
ARTCRAFT - STRATFORD, L.C.
D.B. 649 P. 470

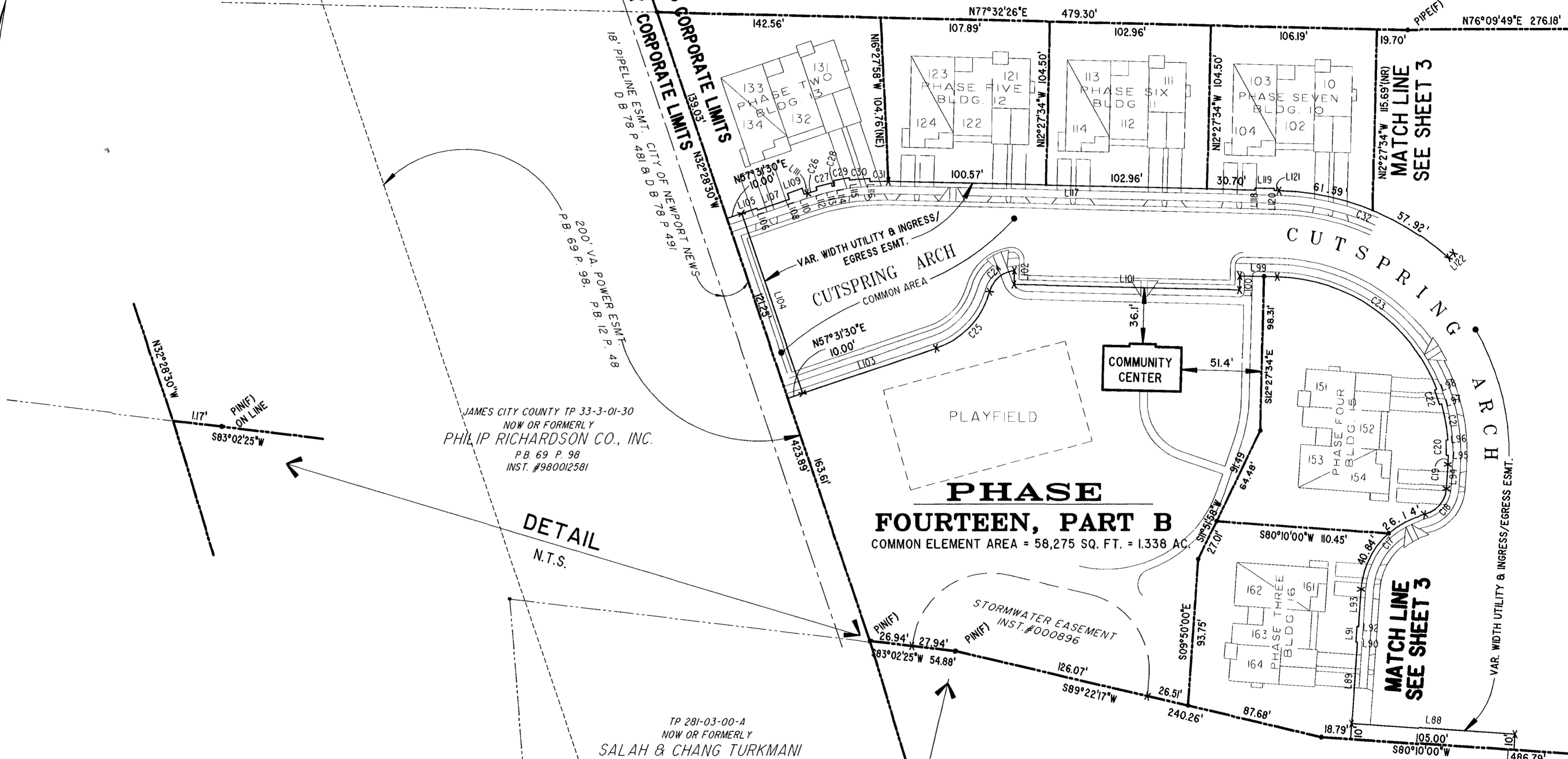
JAMES CITY COUNTY
CITY OF WILLIAMSBURG CORPORATE LIMITS
CORPORATE LIMITS

JAMES CITY COUNTY TP 33-3-01-30
NOW OR FORMERLY
PHILIP RICHARDSON CO., INC.
P.B. 69 P. 98
INST. #980012581

TP 281-03-00-A
NOW OR FORMERLY
SALAH & CHANG TURKMANI
D.B. 94 P. 92

TP 281-10-00-B
NOW OR FORMERLY
752 L.L.C.
INST. #980305

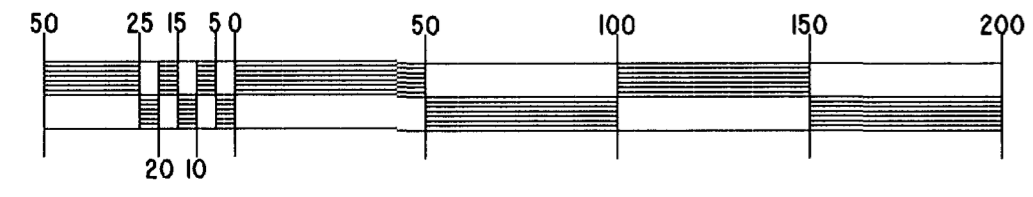
TP 282-08-00-001
NOW OR FORMERLY
752 L.L.C.
INST. #980305



DETAIL
N.T.S.

DETAIL
N.T.S.

GRAPHIC SCALE: 1" = 50'



City of Williamsburg & County of James City
Circuit Court: This PLAN was recorded on
8 July 2003
at 10:01 AM/PM, PB 90 PG 76-80
DOCUMENT # 031431
BETSY B. WOOLRIDGE, CLERK
Betsy B. Woolridge Clerk

EXHIBIT "A"
CLAIBORNE
(A CONDOMINIUM COMMUNITY)
PHASE FOURTEEN

Hassell & Folkes, P.C. Engineers Surveyors Planners Chesapeake, VA 23320 (757) 547-9531		SIZE C	CONTRACT NO	FILE NAME S:\PLATS\CLAINBORNE\PH-14-BLDG-7.DWG	REV.
SCALE: 1" = 50'		DATE: 06/12/03	SHEET 4 of 5		