

JAMES CITY COUNTY TP 33-3-01-27
NOW OR FORMERLY
ARTCRAFT - STRATFORD, L.C.
D.B. 649 P. 470

JAMES CITY COUNTY TP 33-3-01-28
NOW OR FORMERLY
GARY E. & CATHY L. NESTER
D.B. 509 P. 735

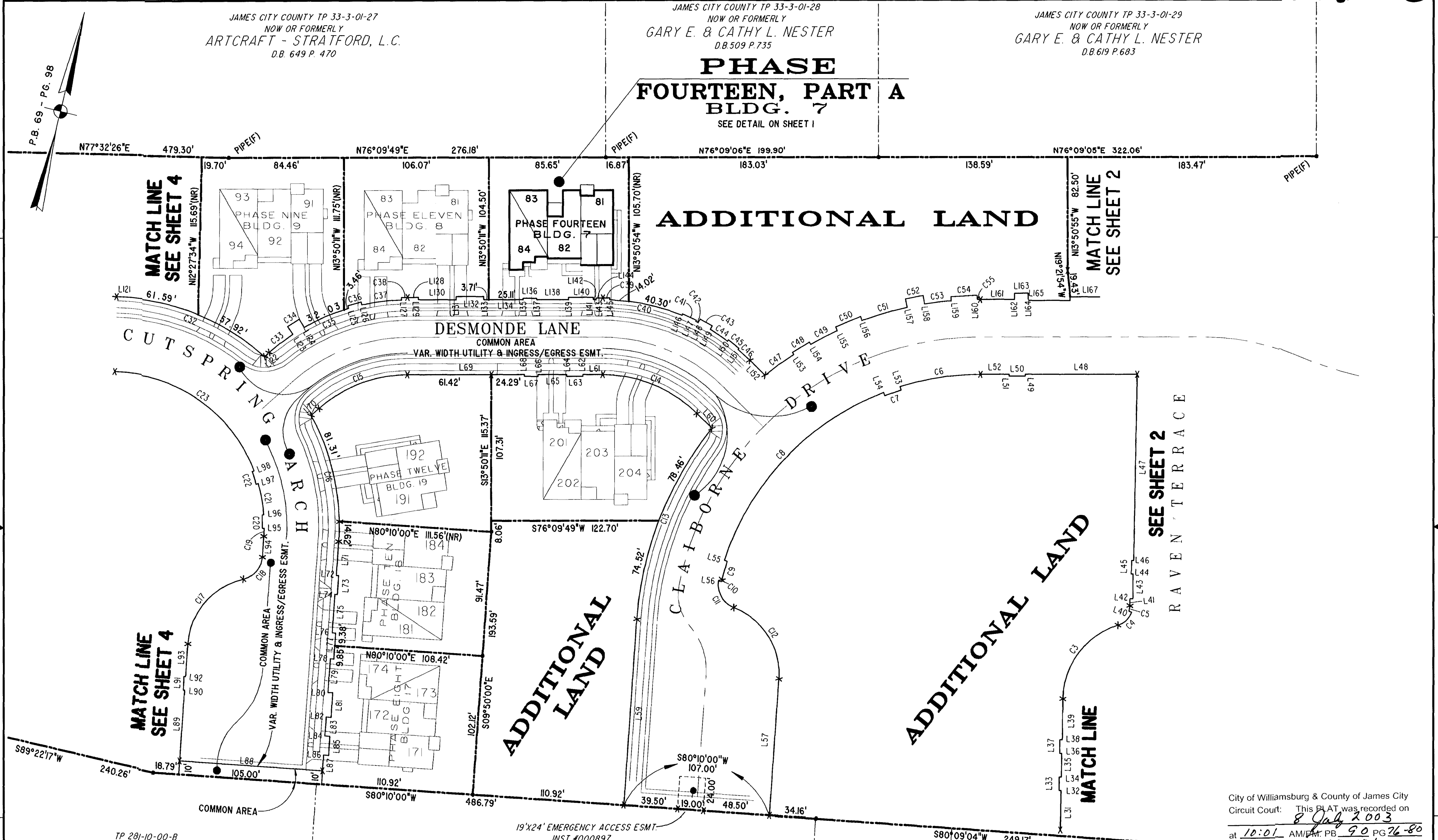
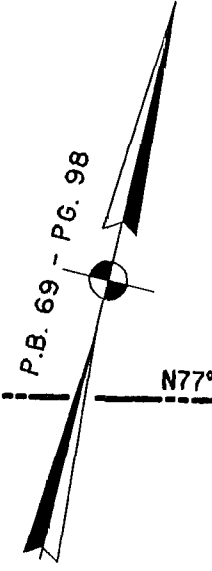
JAMES CITY COUNTY TP 33-3-01-29
NOW OR FORMERLY
GARY E. & CATHY L. NESTER
D.B. 619 P. 683

**PHASE
FOURTEEN, PART A
BLDG. 7**
SEE DETAIL ON SHEET I

ADDITIONAL LAND

ADDITIONAL LAND

ADDITIONAL LAND



MATCH LINE
SEE SHEET 4

MATCH LINE
SEE SHEET 4

MATCH LINE
SEE SHEET 2

SEE SHEET 2

RAVEN TERRACE

TP 281-10-00-B
NOW OR FORMERLY
752 L.L.C.
INST. #980305

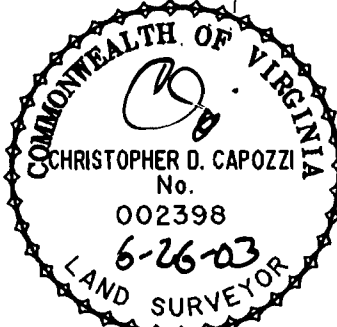
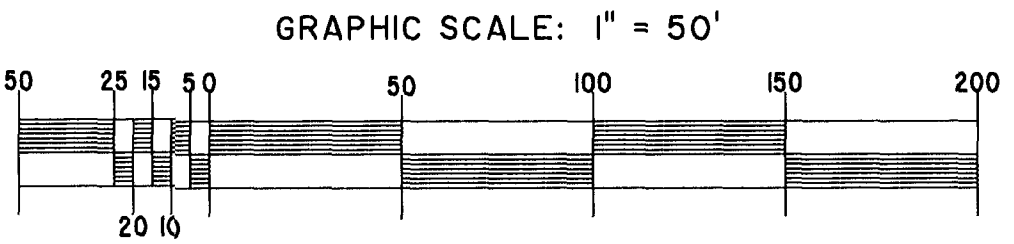
TP 282-08-00-001
NOW OR FORMERLY
752 L.L.C.
INST. #980305

TP 281-10-00-B
NOW OR FORMERLY
752 L.L.C.
INST. #980305

TP 282-08-00-001
NOW OR FORMERLY
752 L.L.C.
INST. #980305

City of Williamsburg & County of James City
Circuit Court: This PLAT was recorded on
8 July 2003
at 10:01 AM, P.M. PB 90 PG 76-80
DOCUMENT # 031431
BETSY B. WOOLRIDGE, CLERK
Betsy B. Woolridge Clerk

EXHIBIT "A"
CLAIBORNE
(A CONDOMINIUM COMMUNITY)
PHASE FOURTEEN



Hassell & Folkes, P.C. Engineers Surveyors Planners Chesapeake, VA 23320 (757) 547-9531	SIZE C	CONTRACT NO	FILE NAME S:\PLAT\CLAIBORNE\PH-14-BLDG-7.DWG	REV.
SCALE: 1" = 50'		DATE: 06/12/03	SHEET 3 of 5	