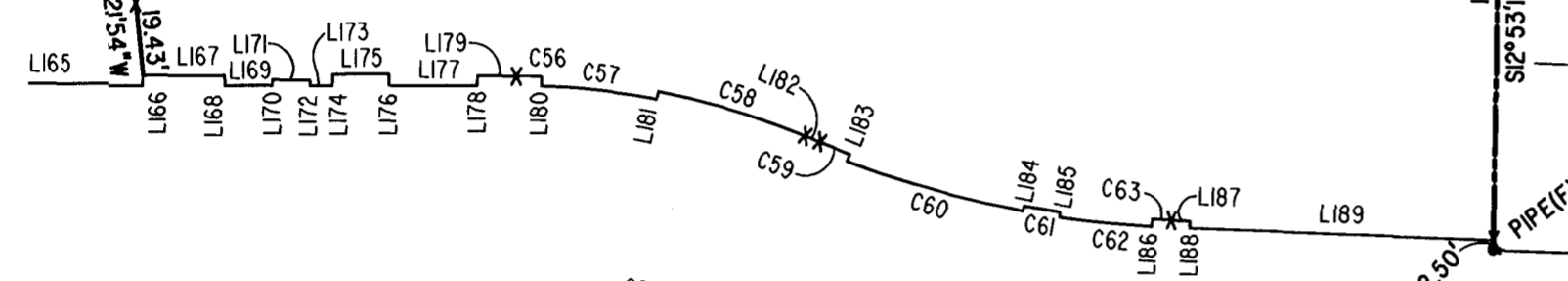


JAMES CITY COUNTY TP 33-3-01-29
NOW OR FORMERLY
GARY E. & CATHY L. NESTER
D.B.619 P.683

JAMES CITY COUNTY TP 33-3-01-24
NOW OR FORMERLY
GOLDEN KNIGHTS, INC.
D.B.568 P.316

ADDITIONAL LAND

MATCH LINE
SEE SHEET 3

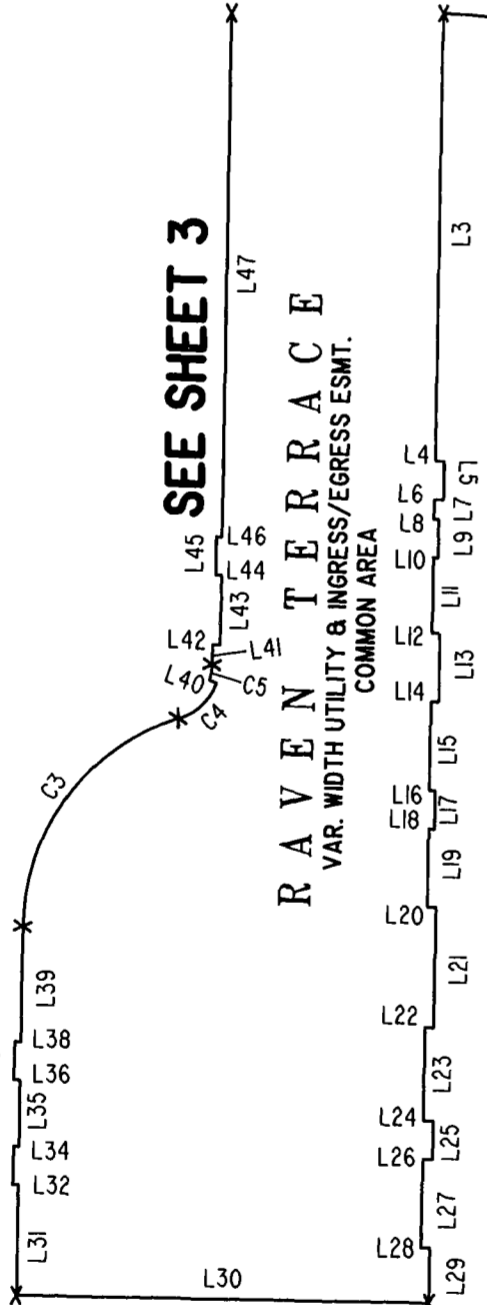


SEE SHEET 3

MATCH LINE

RAVEN TERRACE

VAR. WIDTH UTILITY & INGRESS/EGRESS ESMT.
COMMON AREA

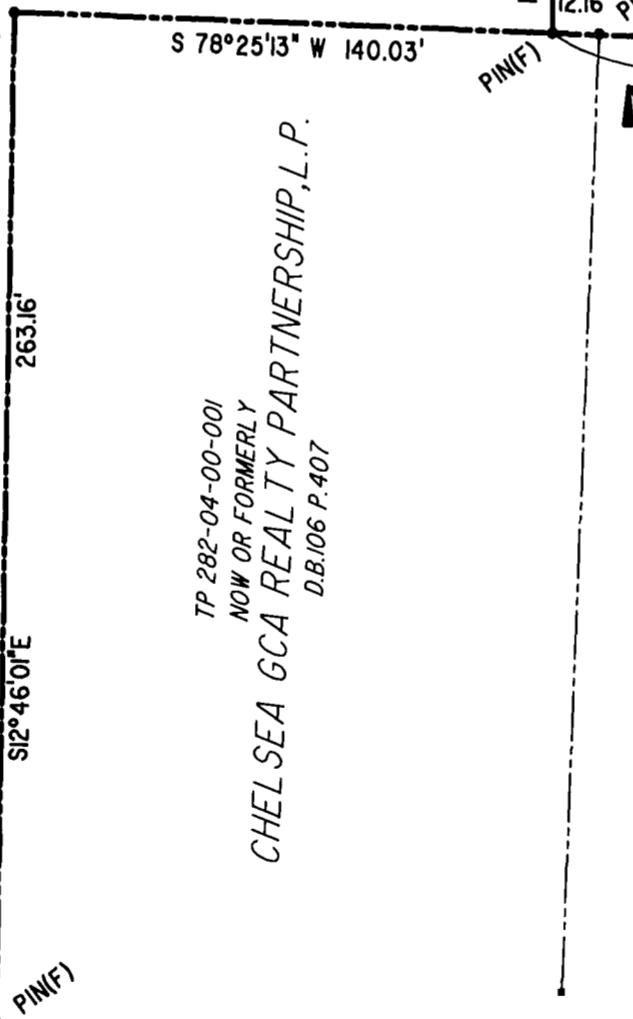


ADDITIONAL LAND

CLAIBORNE DRIVE

VAR. WIDTH UTILITY & INGRESS/EGRESS ESMT.
COMMON AREA

BENT P.I.N.F.



CHELSEA GCA REALTY PARTNERSHIP, L.P.
TP 282-04-00-001
NOW OR FORMERLY
D.B.106 P.407

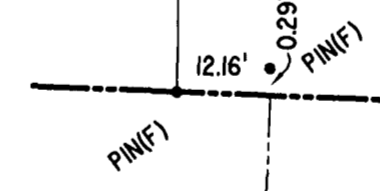
MARK II INVESTMENTS LTD.
TP 252-01-00-009
NOW OR FORMERLY
D.B.130 P.671

TP 252-01-00-008
N78°27'47"E 321.22'

COMMON AREA - PHASE ONE
308.40'
S78°27'39"W 320.56'

CHELSEA GCA REALTY PARTNERSHIP, L.P.
TP 282-05-00-001
NOW OR FORMERLY
D.B.113 P.693

DETAIL
N.T.S.



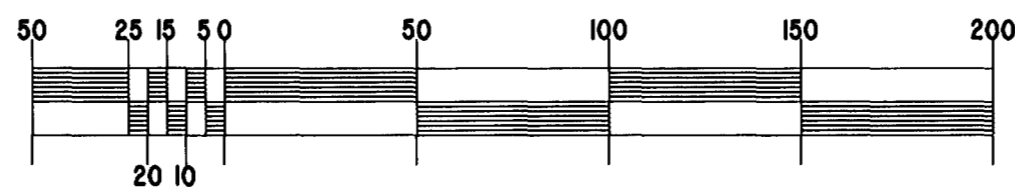
U.S. RTE. 60
RICHMOND ROAD

P.B. 69 - PG. 98

S80°09'04"W 249.17' FLD

TP 282-08-00-001
NOW OR FORMERLY
752 L.L.C.
INST. #980305

GRAPHIC SCALE: 1" = 50'



City of Williamsburg & County of James City
Circuit Court: This PLAT was recorded on
8 July 2003
at 10:01 AM/PM, PB 90 PG 26-80
DOCUMENT # 031431
BETSY B. WOOLRIDGE, CLERK
Betsy B. Woolridge Clerk

EXHIBIT "A" CLAIBORNE (A CONDOMINIUM COMMUNITY) PHASE FOURTEEN

Hassell & Folkes, P.C. Engineers Surveyors Planners Chesapeake, VA 23320 (757) 547-9531	SIZE C	CONTRACT NO	FILE NAME S:\PLATS\CLAINBORNE\PH-14-BLOG-7.DWG	REV.
	SCALE: 1" = 50'	DATE: 06/12/03	SHEET 2 of 5	