

### CURVE TABLE

CURVE	RADIUS	LENGTH	TANGENT	CHORD	BEARING	DELTA
C1	350.00'	61.09'	30.62'	61.01'	S38°21'00"W	10°00'00"
C2	400.00'	69.81'	35.00'	69.72'	S38°21'00"W	10°00'00"
C3	20.00'	31.42'	20.00'	28.28'	S01°39'00"E	90°00'00"
C4	20.00'	31.42'	20.00'	28.28'	S88°21'00"W	90°00'00"
C5	50.00'	36.14'	18.90'	35.36'	S22°38'43"W	41°24'35"
C6	50.00'	36.14'	18.90'	35.36'	N46°39'00"W	262°49'10"
C7	50.00'	36.14'	18.90'	35.36'	N64°03'17"E	41°24'35"
C8	350.00'	61.09'	30.62'	61.01'	N38°21'00"E	10°00'00"
C9	400.00'	69.81'	35.00'	69.72'	N38°21'00"E	10°00'00"
C10	375.00'	65.45'	32.81'	65.37'	N38°21'00"E	10°00'00"
C11	375.00'	65.45'	32.81'	65.37'	N38°21'00"E	10°00'00"

### DRAINAGE EASEMENT LINE TABLE

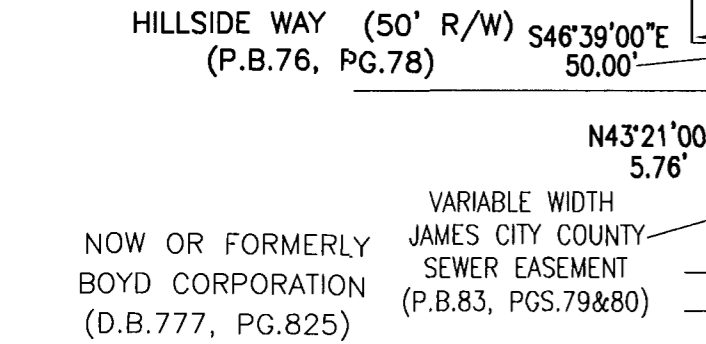
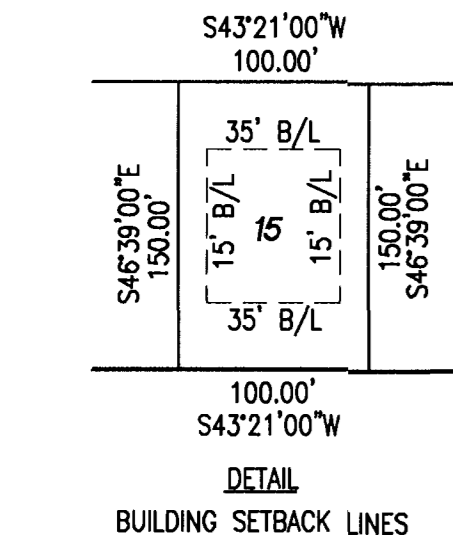
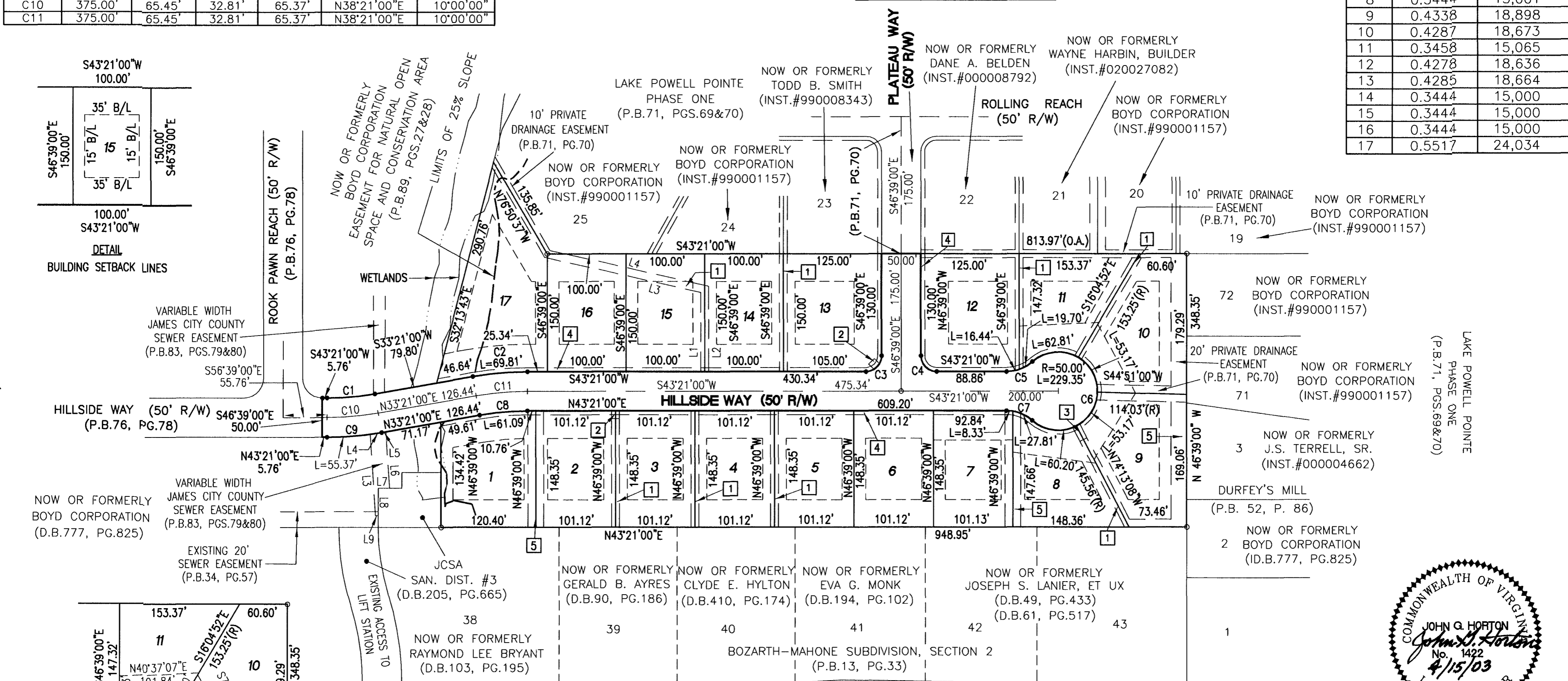
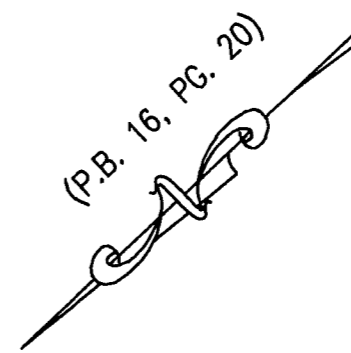
LINE	DIRECTION	DISTANCE
L1	S46°39'00"E	101.00'
L2	N46°39'00"W	109.00'
L3	N56°01'49"E	203.18'
L4	S56°01'49"W	186.78'

### SEWER EASEMENT LINE TABLE

LINE	DIRECTION	DISTANCE
L3	S50°04'37"E	104.01'
L4	---	L=14.45'
L5	S33°21'00"W	5.66'
L6	N50°04'37"W	72.19'
L7	N43°21'00"E	14.23'
L8	N46°39'00"W	35.00'
L9	N39°55'23"E	3.70'

### AREA TABLE

LOT	AREA (ACRES)	AREA (SQ.FT.)
1	0.3968	17,284
2	0.3444	15,001
3	0.3444	15,001
4	0.3444	15,001
5	0.3444	15,001
6	0.3444	15,001
7	0.3444	15,001
8	0.3444	15,001
9	0.4338	18,898
10	0.4287	18,673
11	0.3458	15,065
12	0.4278	18,636
13	0.4285	18,664
14	0.3444	15,000
15	0.3444	15,000
16	0.3444	15,000
17	0.5517	24,034

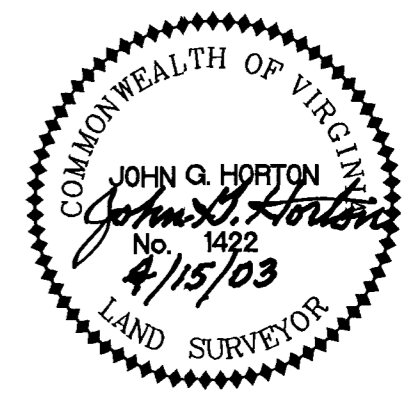


## JAMESTOWN ROAD (ROUTE 31) (VARIABLE WIDTH R/W)

City of Williamsburg & County of James City  
 Circuit Court: This PLAT was recorded on  
July 7, 2003  
 at 2:11 AM P.M. PG. 90 PG. 75  
 DOCUMENT # 030019880  
 BETSY B. WOOLRIDGE, CLERK  
*Betsy B. Woolridge* Clerk



- 1 10' PRIVATE DRAINAGE EASEMENT
- 2 10' x 10' VIRGINIA POWER EASEMENT
- 3 10' x 20' VIRGINIA POWER EASEMENT
- 4 5' UTILITY EASEMENT HEREBY DEDICATED JAMES CITY COUNTY SERVICES AUTHORITY
- 5 20' DRAINAGE EASEMENT HEREBY DEDICATED TO THE HOMEOWNER'S ASSOCIATION



**SUBDIVISION**  
 OF  
**LAKE POWELL POINT**  
**PHASE FOUR**  
 JAMESTOWN MAGISTERIAL DISTRICT  
 JAMES CITY COUNTY, VIRGINIA  
 SCALE: 1"= 100' MARCH 3, 2003  
**HORTON & DODD, P.C.**  
 SURVEYORS, ENGINEERS & PLANNERS  
 300 GEORGE WASHINGTON HIGHWAY N.  
 CHESAPEAKE VIRGINIA 23323  
 (757) 487-4535