

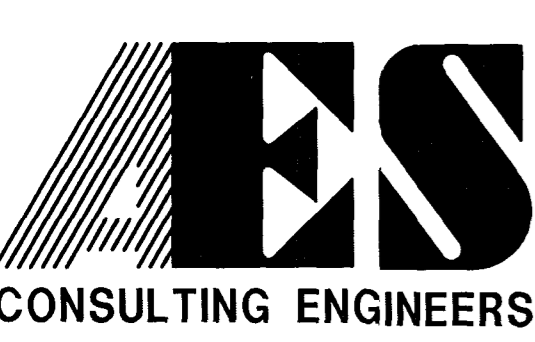
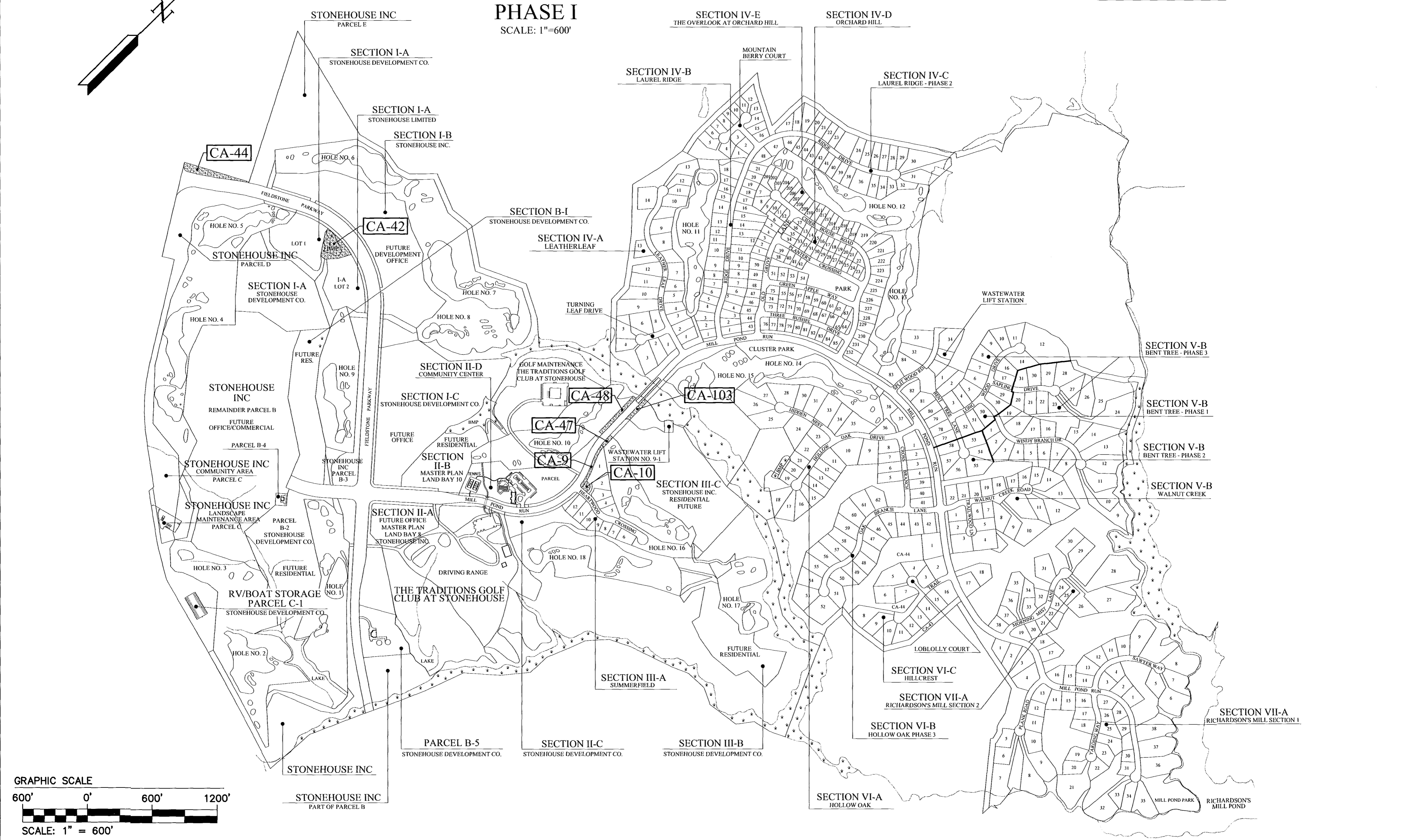
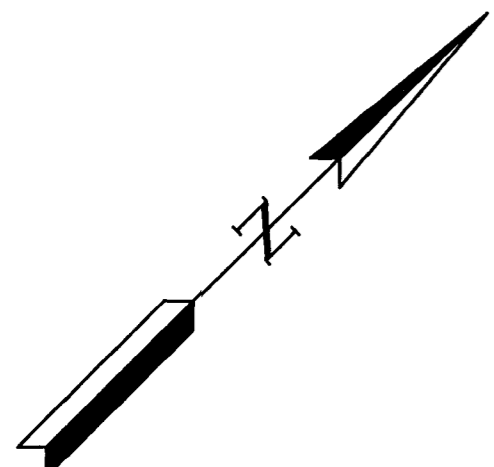
COMMON AREA



DEVELOPMENT AREA ONE,  
PHASE I

SCALE: 1"=600'

COMMON AREAS TO BE CONVEYED			
SECTION	COMMON AREA	ACRES	REFERENCE
FIELDSTONE PARKWAY	CA-42	1.2602	PLAT BOOK 90, PAGE 9-11
	CA-44	0.6777	"
MILL POND RUN	CA-47	0.0973	PLAT BOOK 90, PAGE 12-15
	CA-48	0.3289	"
	CA-103	0.3549	"
SECTION III-A, SUMMERFIELD	CA-9	0.2434	PLAT BOOK 68, PAGE 57-58
	CA-10	0.1046	"
TOTAL	7 PARCELS	3.0670	



5248 Olde Towne Road, Suite 1  
Williamsburg, Virginia 23188  
(757) 253-0040  
Fax (757) 220-8994

MAP SHOWING COMMON AREAS  
FOR CONVEYANCE TO  
THE ASSOCIATION AT STONEHOUSE, INC.  
(HOMEOWNERS ASSOCIATION)

**STONEHOUSE**

STONEHOUSE DISTRICT JAMES CITY COUNTY VIRGINIA



No.	DATE	REVISION / COMMENT / NOTE	BY

City of Williamsburg & County of James City  
Circuit Court: This PLAT was recorded on  
30 June 2003  
at 4:00 AM/PM, PB 90 PG 71  
DOCUMENT # 030019330  
BETSY B. WOOLRIDGE, CLERK  
Betsy B. Woolridge, Clerk

Designed AES	Drawn AWT
Scale 1' = 600'	Date 6/30/03
Project No. 9028-17	
Drawing No. 1 OF 1	