

R/W CURVE TABLE						
NO.	DELTA	RADIUS	LENGTH	TANGENT	CHORD	CH. BEARING
C1	127°58'11"	254.00	567.31	520.43	456.53	S10°12'39"E
C2	74°43'54"	300.00	391.30	229.08	364.14	N53°50'58"E
C3	73°41'22"	250.00	321.53	187.33	299.82	S54°22'14"W
C4	84°21'17"	295.00	434.32	267.28	396.14	S33°44'31"E
C5	12°45'07"	510.00	113.51	56.99	113.27	S02°03'34"W
C6	95°55'02"	25.00	41.85	27.73	37.13	S52°16'30"E
C7	95°55'02"	25.00	41.85	27.73	37.13	S31°48'27"W
C8	24°35'12"	560.00	240.31	122.03	238.47	N03°51'28"W
C9	17°46'00"	560.00	173.65	87.53	172.95	N07°16'04"W
C10	262°49'09"	50.00	229.36	75.00	75.00	N32°44'18"W
C11	41°24'34"	50.00	36.14	18.90	35.36	N77°57'59"E
C12	80°28'16"	304.00	426.96	257.22	392.73	N35°41'01"W
C13	31°44'22"	304.00	168.40	86.42	166.26	N37°54'16"E
C14	30°12'11"	254.00	133.89	68.54	132.35	N68°52'32"E

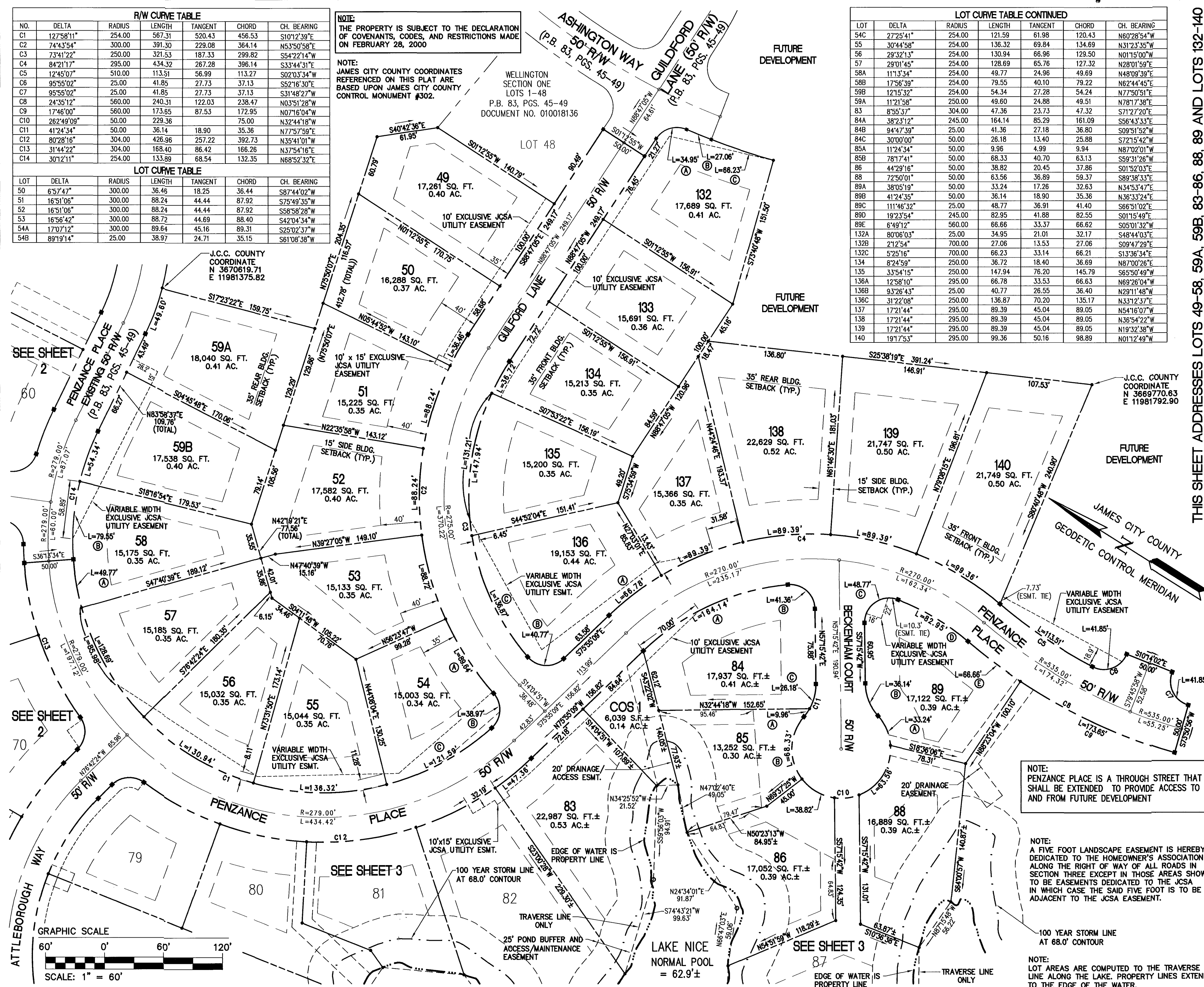
LOT CURVE TABLE						
LOT	DELTA	RADIUS	LENGTH	TANGENT	CHORD	CH. BEARING
50	6°57'47"	300.00	36.46	18.25	36.44	S87°44'02"W
51	16°51'06"	300.00	88.24	44.44	87.92	S75°49'35"W
52	16°51'06"	300.00	88.24	44.44	87.92	S58°58'28"W
53	16°56'42"	300.00	88.72	44.69	88.40	S42°04'34"W
54A	17°07'12"	300.00	89.64	45.16	89.31	S25°02'37"W
54B	89°19'14"	25.00	38.97	24.71	35.15	S61°08'38"W

NOTE:
THE PROPERTY IS SUBJECT TO THE DECLARATION OF COVENANTS, CODES, AND RESTRICTIONS MADE ON FEBRUARY 28, 2000

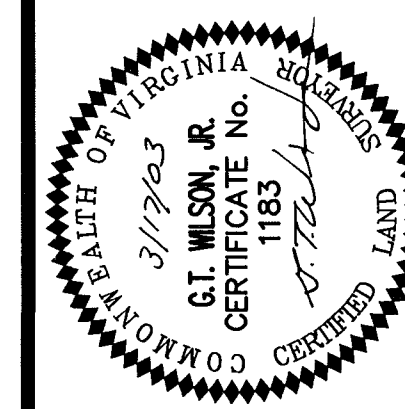
NOTE:
JAMES CITY COUNTY COORDINATES REFERENCED ON THIS PLAT ARE BASED UPON JAMES CITY COUNTY CONTROL MONUMENT #302.

WELLINGTON SECTION ONE LOTS 1-48
P.B. 83, PGS. 45-49
DOCUMENT NO. 010018136

LOT CURVE TABLE CONTINUED						
LOT	DELTA	RADIUS	LENGTH	TANGENT	CHORD	CH. BEARING
54C	27°25'41"	254.00	121.59	61.98	120.43	N60°28'54"W
55	30°44'58"	254.00	136.32	69.84	134.69	N31°23'35"W
56	29°32'13"	254.00	130.94	66.96	129.50	N01°15'00"W
57	29°01'45"	254.00	128.69	65.76	127.32	N28°01'59"E
58A	11°13'34"	254.00	49.77	24.96	49.89	N48°09'39"E
58B	17°56'39"	254.00	79.55	40.10	79.22	N62°44'45"E
59A	12°15'32"	254.00	54.34	27.28	54.24	N77°50'51"E
59A	11°21'58"	250.00	49.60	24.88	49.51	N78°17'38"E
83	8°55'37"	304.00	47.36	23.73	47.32	S71°27'20"E
84A	38°23'12"	245.00	164.14	85.29	161.09	S56°43'33"E
84B	94°47'39"	25.00	41.36	27.18	36.80	S09°51'52"W
84C	30°00'00"	50.00	26.18	13.40	25.88	S72°15'42"W
85A	11°24'34"	50.00	9.96	4.99	9.94	N87°02'01"W
85B	78°17'41"	50.00	68.33	40.70	63.13	S59°31'26"W
86	44°29'16"	50.00	38.82	20.45	37.86	S01°52'03"E
88	72°50'01"	50.00	63.56	36.89	59.37	S89°38'33"E
89A	38°05'19"	50.00	33.24	17.26	32.63	N34°53'47"E
89B	41°24'35"	50.00	36.14	18.90	35.36	N36°33'24"E
89C	111°46'32"	25.00	48.77	36.91	41.40	S66°51'02"E
89D	19°23'54"	245.00	82.95	41.88	82.55	S01°15'49"E
89E	6°49'12"	560.00	66.66	33.37	66.62	S05°01'32"W
132A	80°06'03"	25.00	34.95	21.01	32.17	S48°44'03"E
132B	21°25'4"	700.00	27.06	13.53	27.06	S09°47'29"E
132C	5°25'16"	700.00	66.23	33.14	66.21	S13°36'34"E
134	8°24'59"	250.00	36.72	18.40	36.69	N87°00'26"E
135	33°54'15"	250.00	147.94	76.20	145.79	S65°50'49"W
136A	12°58'10"	295.00	66.78	33.53	66.83	N69°26'04"W
136B	93°26'43"	25.00	40.77	26.55	36.40	N29°11'48"W
136C	31°22'08"	250.00	136.87	70.20	135.17	N33°12'37"E
137	17°21'44"	295.00	89.39	45.04	89.05	N54°16'07"W
138	17°21'44"	295.00	89.39	45.04	89.05	N36°54'22"W
139	17°21'44"	295.00	89.39	45.04	89.05	N19°32'38"W
140	19°17'53"	295.00	99.36	50.16	98.89	N01°12'49"W



NO.	DATE	REVISION / COMMENT / NOTE	JFS	BY
1	3/15/03	AM/PM, PB 80, PGS 62-65		
2	3/17/03	REVISION PER COUNTY COMMENTS		

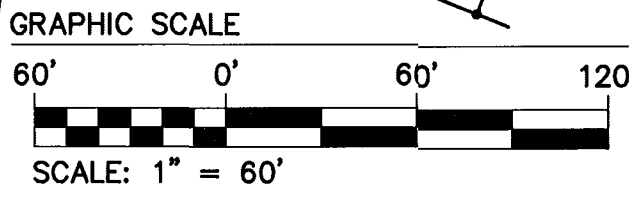


CONSULTING ENGINEERS
5248 Olde Towne Road, Suite 1
Williamsburg, Virginia 23188
(757) 253-0040
Fax (757) 220-8994

PLAT OF SUBDIVISION
WELLINGTON
SECTION THREE
LOTS 49-58, 59A, 59B, 60-89 AND 132-140
BEING THE PROPERTY OF
WELLINGTON, L.L.C.
STONEHOUSE DISTRICT JAMES CITY COUNTY VIRGINIA

Designed HWP	Drawn JFS
Scale 1"=60'	Date 3/17/03
Project No. 8223-6	
Drawing No. 4 OF 4	

JFS 03.21.03-13:57 822306P04.dwg



NOTE:
PENZANCE PLACE IS A THROUGH STREET THAT SHALL BE EXTENDED TO PROVIDE ACCESS TO AND FROM FUTURE DEVELOPMENT

NOTE:
A FIVE FOOT LANDSCAPE EASEMENT IS HEREBY DEDICATED TO THE HOMEOWNER'S ASSOCIATION ALONG THE RIGHT OF WAY OF ALL ROADS IN SECTION THREE EXCEPT IN THOSE AREAS SHOWN TO BE EASEMENTS DEDICATED TO THE JCSA IN WHICH CASE THE SAID FIVE FOOT IS TO BE ADJACENT TO THE JCSA EASEMENT.

NOTE:
LOT AREAS ARE COMPUTED TO THE TRAVERSE LINE ALONG THE LAKE. PROPERTY LINES EXTEND TO THE EDGE OF THE WATER.