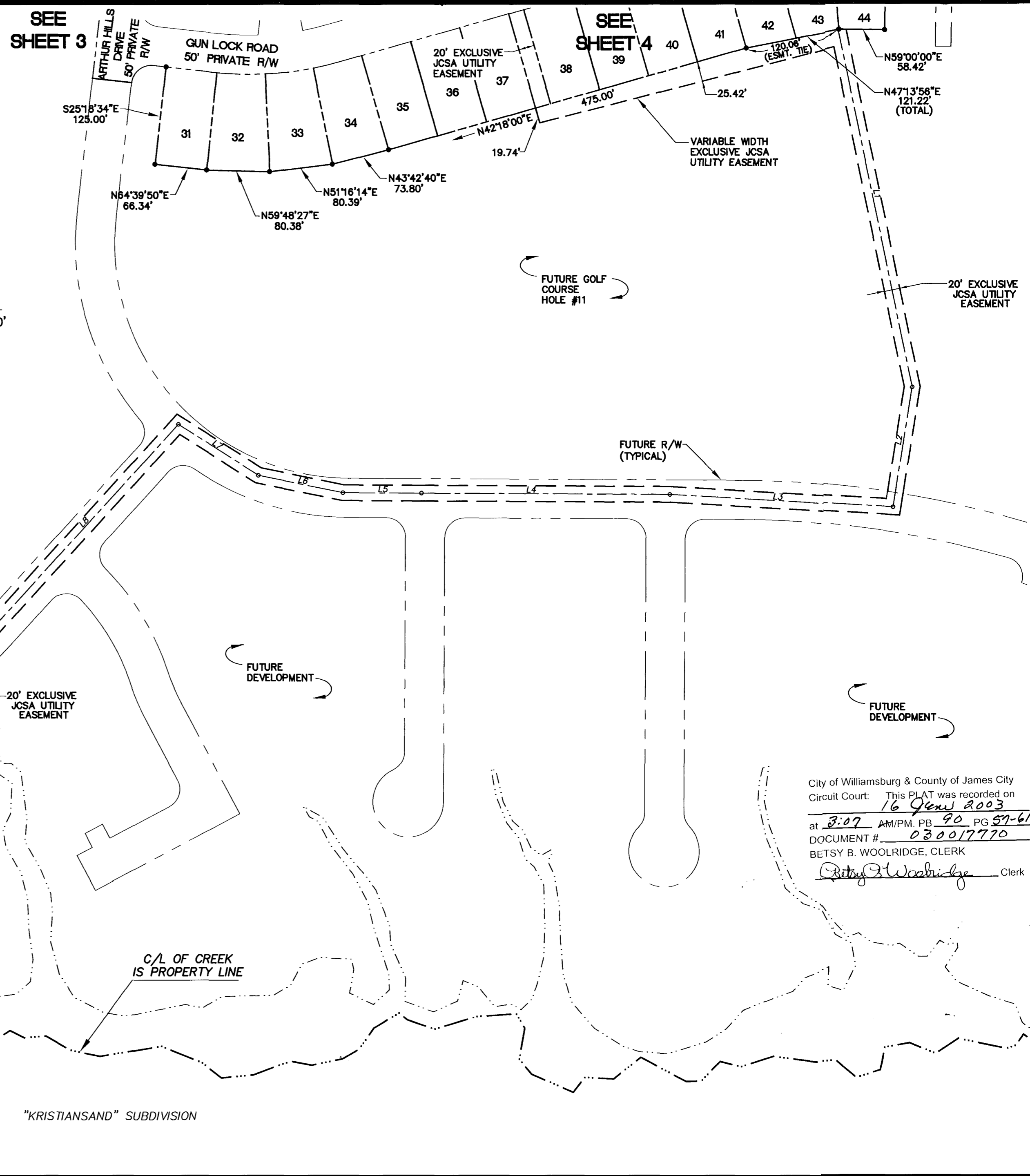
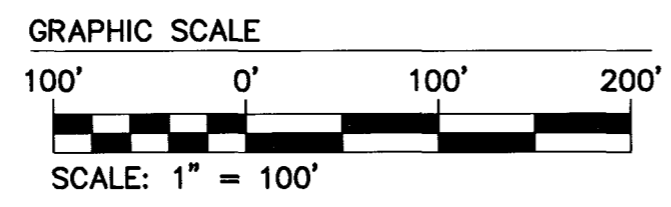
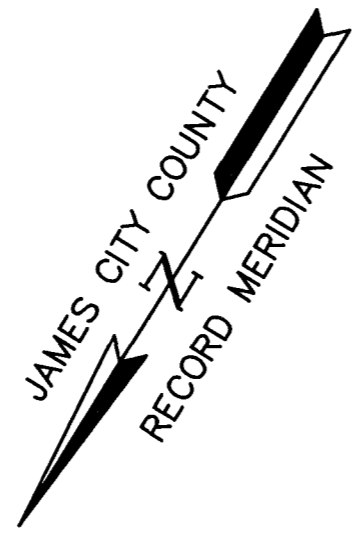


LINE	LENGTH	BEARING
L1	466.09	N43°30'53"W
L2	154.71	N22°42'50"W
L3	286.39	N61°31'48"E
L4	317.00	N58°27'00"E
L5	100.00	N58°30'20"E
L6	110.00	N69°48'28"E
L7	121.00	S89°17'52"E
L8	354.85	N10°29'00"E
L9	109.16	N18°12'47"E
L10	137.25	N34°10'08"E
L11	134.55	N51°47'43"E
L12	129.01	N68°50'58"E
L13	308.64	N13°49'00"W
L14	203.39	N00°36'55"W



NOW OR FORMERLY  
EVELYN H. ANDERSON, EXECUTRIX  
FREDERICK A. HOAR ESTATE  
TAX MAP PARCEL #(23-2)(1-50)  
W.B. 52, PG. 19  
P.B. 49, PG. 88

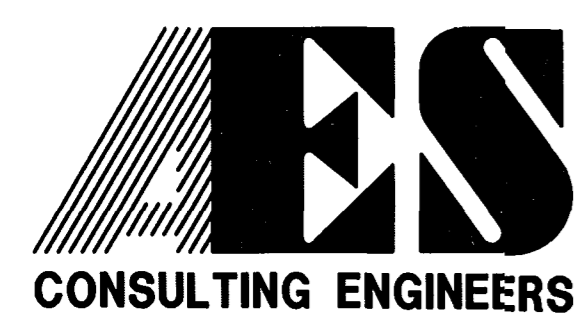
EXIST. 20' J.C.S.A.  
SEWER EASEMENT  
D.B. 189, PG. 404  
P.B. 35, PG. 53

NOW OR FORMERLY  
GEORGE C. FORD, JR.  
& SHARYN FORD  
TAX MAP PARCEL #(23-2)(1-51)  
D.B. 462, PG. 311  
D.B. 426, PG. 303

City of Williamsburg & County of James City  
Circuit Court: This PLAT was recorded on  
16 June 2003  
at 3:07 AM/PM, PB 90, PG 57-61  
DOCUMENT # 03001770  
BETSY B. WOOLRIDGE, CLERK  
*Betsy B. Woolridge* Clerk

888106p05.dwg  
05.12.03-13:25  
JFS

"KRISTIANSAND" SUBDIVISION



5248 Olde Towne Road, Suite 1  
Williamsburg, Virginia 23188  
(757) 253-0040  
Fax (757) 220-8994

**PLAT OF SUBDIVISION  
COLONIAL HERITAGE  
PHASE ONE, SECTION ONE  
LOTS 1-44  
PREPARED FOR COLONIAL HERITAGE LLC**

STONEHOUSE DISTRICT      JAMES CITY COUNTY      VIRGINIA



No.	DATE	REVISION / COMMENT / NOTE	BY
3	4/30/03	REVISED PER JAMES CITY COUNTY COMMENTS	JFS
2	4/4/03	REVISED PER OWNER	JFS
1	3/11/03	REVISED COMMON AREAS PER OWNER	JFS

Designed	Drawn
AES	JFS
Scale	Date
1"=100'	2/14/03
Project No.	
8881-06	
Drawing No.	
5 OF 5	