

90 PAGE 51

#03001011

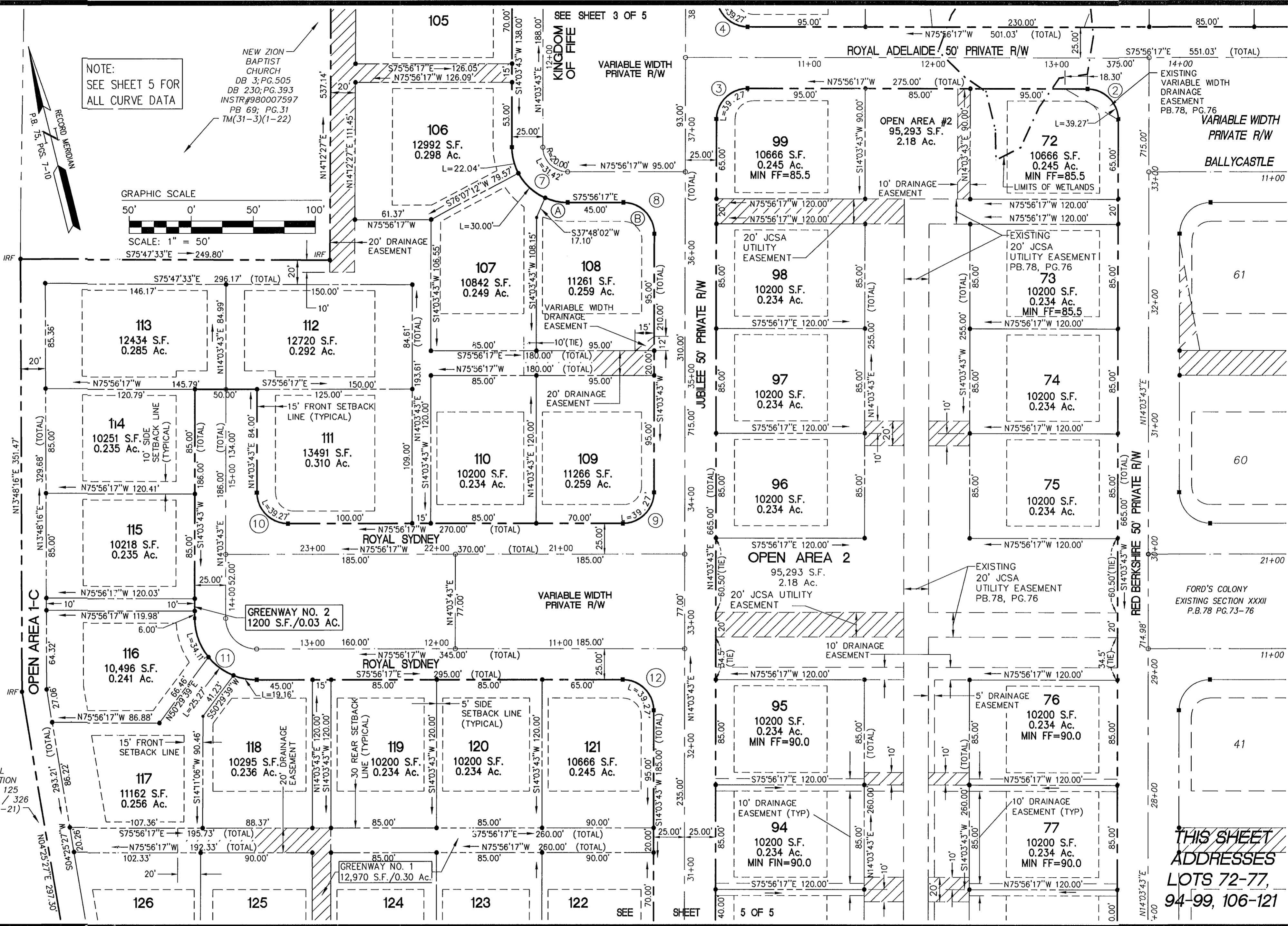
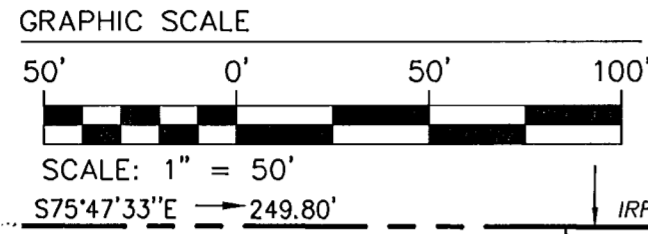
FC32CP04.dwg

06.21.01-17:08

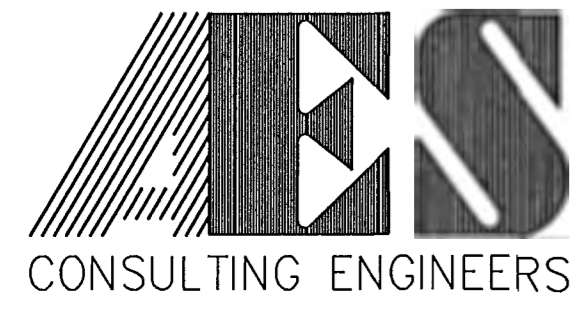
LBA

NOTE:
SEE SHEET 5 FOR
ALL CURVE DATA

NEW ZION
BAPTIST
CHURCH
DB 3; PG. 505
DB 230; PG. 393
INSTR #980007597
PB 69; PG. 31
TM(31-3)(1-22)



**THIS SHEET
ADDRESSES
LOTS 72-77,
94-99, 106-121**



5248 Olde Towne Road, Suite 1
Williamsburg, Virginia 23188
(757) 253-0040
Fax (757) 220-8994

PLAT OF SUBDIVISION
SECTION XXXII
LOTS 72 - 78, 93 - 129
**FORD'S COLONY
AT WILLIAMSBURG**
POWATAN DISTRICT JAMES CITY COUNTY VIRGINIA



| | | | |
|---|------|---------------------------|----|
| City of Williamsburg & County of James City | | | |
| Circuit Court: This PLAT was recorded on | | | |
| at 1:08 AM/PM, PB 90 PG 48-52 | | | |
| DOCUMENT # 03001011 | | | |
| BETSY B. WOOLRIDGE, CLERK | | | |
| Betsy B. Woolridge Clerk | | | |
| No. | DATE | REVISION / COMMENT / NOTE | BY |
| | | | |

| | |
|-------------------------|-----------------|
| Designed CBR | Drawn AES |
| Scale 1"=50' | Date 6/22/01 |
| Project No. 5652-32C | |
| Drawing No. 4 OF 5 | |