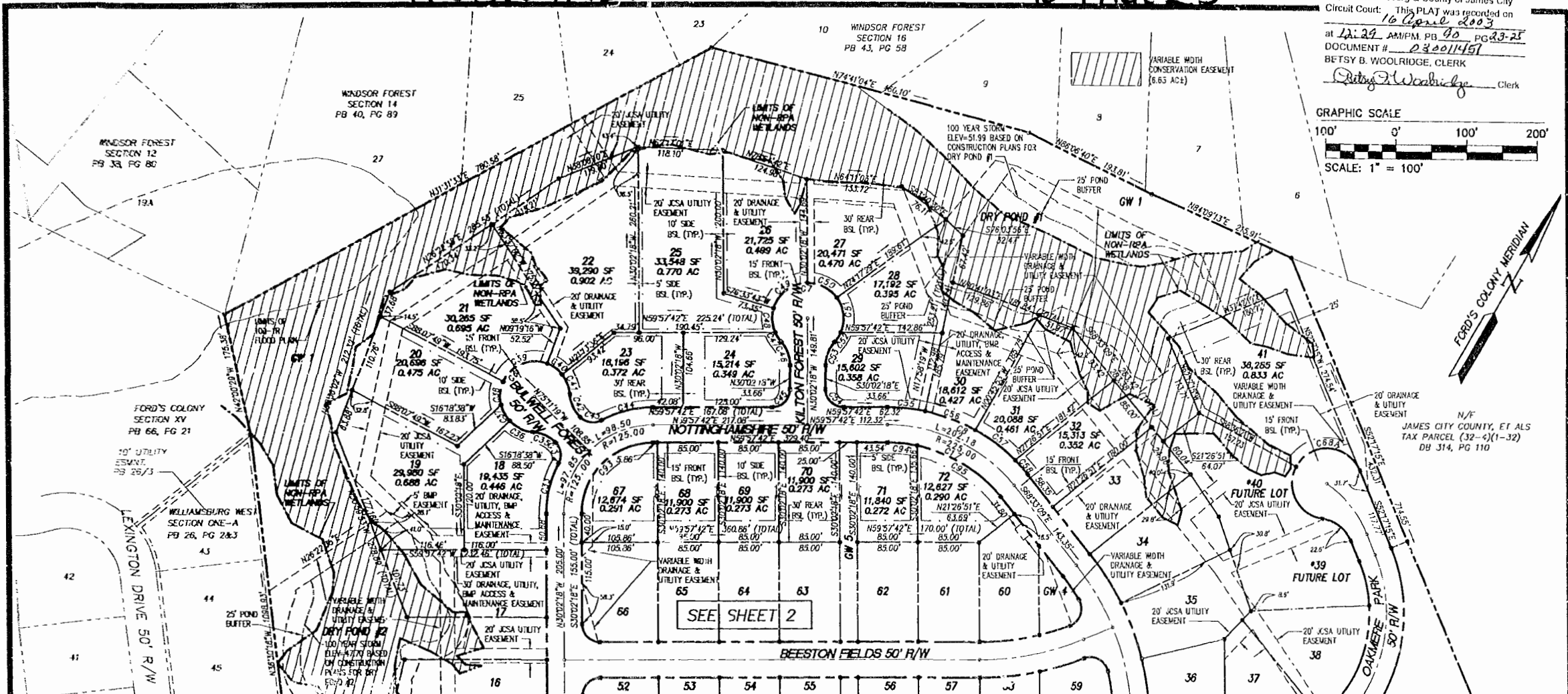
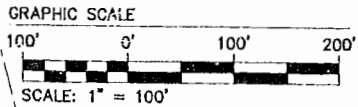


#030011451

90 PAGE 25

City of Williamsburg & County of James City
 Circuit Court: This PLAT was recorded on
16 April 2003
 at 12:22 AM/PM, PB 90, PG 23-25
 DOCUMENT # 030011451
 BETSY B. WOOLRIDGE, CLERK
Betsy Woolridge, Clerk



LOT CURVE TABLE

LOT	NO.	DELTA	RADIUS	LENGTH	TANGENT	CHORD	CHL BEARING
2	C01	175.00	170.65	57.41	108.10	58.24	S82°43'20"W
3	C02	175.00	34.40	17.30	34.43	58.24	S82°43'20"W
4	C03	175.00	81.80	46.57	90.55	N74°57'22"E	
5	C04	25.00	32.85	16.36	30.62	S82°43'20"W	
6	C05	30.00	20.12	10.20	19.80	N25°27'28"E	
7	C06	30.00	40.80	27.19	47.76	N88°01'05"E	
8	C07	30.00	52.39	26.88	50.02	S82°43'20"W	
9	C08	30.00	50.34	27.54	48.24	S17°24'21"W	
10	C09	30.00	38.79	19.27	35.97	S82°43'20"W	
11	C10	30.00	52.39	26.87	50.00	N44°25'41"E	
12	C11	30.00	32.65	16.36	30.62	N25°27'28"E	
13	C12	175.00	84.86	48.62	83.70	N25°27'28"E	
14	C13	150.00	71.85	37.74	73.21	S15°24'51"E	
15	C14	25.00	32.03	16.33	28.86	N25°27'28"E	
16	C15	30.00	38.14	19.80	35.36	S82°43'20"W	
17	C16	30.00	37.44	19.05	36.59	N84°51'22"E	
18	C17	30.00	28.18	13.40	25.89	S82°43'20"W	
19	C18	30.00	32.21	17.41	32.80	S82°43'20"W	
20	C19	30.00	75.02	46.00	68.18	S37°41'44"E	
21	C20	30.00	28.88	13.85	26.34	N82°02'30"W	
22	C21	30.00	30.54	15.76	30.07	N51°16'34"E	
23	C22	30.00	38.14	19.80	35.36	S82°43'20"W	
24	C23	25.00	32.03	16.33	28.86	N25°27'28"E	
25	C24	30.00	74.74	38.16	73.97	N45°41'15"E	
26	C25	25.00	30.27	15.00	35.36	N14°52'42"E	
27	C26	30.00	38.14	19.80	35.36	N52°04'35"E	
28	C27	30.00	15.41	7.76	15.33	S82°43'20"W	
29	C28	30.00	38.29	18.40	34.53	S82°43'20"W	
30	C29	30.00	64.01	37.24	58.73	S82°43'20"W	

LOT CURVE TABLE

LOT	NO.	DELTA	RADIUS	LENGTH	TANGENT	CHORD	CHL BEARING
27	C30	5418'47"	50.00	47.41	25.85	45.68	S87°07'36"W
28	C31	5917'37"	50.00	51.86	28.40	48.30	N38°06'32"E
29	C32	1732'31"	50.00	15.80	7.87	15.54	N26°25'32"E
30	C33	4124'34"	50.00	38.14	18.90	35.36	S82°43'20"W
31	C34	9070'00"	25.00	38.27	25.00	35.36	S75°02'18"E
32	C35	12711'11"	250.00	53.17	26.89	53.07	S88°03'18"W
33	C36	1705'74"	250.00	74.58	37.58	74.28	S80°41'30"W
34	C37	1815'13"	250.00	70.21	35.34	69.89	N82°43'07"W
35	C38	6127'13"	250.00	28.70	13.36	28.89	N71°25'45"W
36	C39	1228'44"	375.00	61.48	40.80	61.30	N88°19'47"W
37	C40	1248'54"	375.00	63.53	41.85	63.37	N49°45'28"W
38	C41	1378'13"	375.00	67.07	43.73	68.28	N38°41'24"W
39	C42	9070'00"	25.00	38.27	25.00	35.36	S75°02'18"E
40	C43	3670'57"	190.00	128.93	67.82	127.41	N40°22'17"E
41	C44	5120'27"	190.00	177.89	98.13	171.55	N30°03'23"W
42	C45	1925'36"	190.00	94.31	32.47	64.01	N42°35'26"W
43	C46	3670'57"	50.00	34.70	18.08	34.01	N72°10'05"W
44	C47	2071'41"	50.00	17.88	8.92	17.57	S77°49'32"W
45	C48	1105'33"	50.00	96.77	72.61	82.38	N58°50'27"W
46	C49	12908'24"	50.00	112.67	105.00	90.30	N83°08'33"E
47	C50	38108'28"	75.00	51.17	26.63	50.18	N49°30'25"W
48	C51	7707'27"	25.00	34.52	20.25	31.85	S71°13'07"W
49	C52	2620'24"	240.00	108.50	54.14	105.63	N44°22'11"E
50	C53	232'44"	240.00	12.08	6.03	12.68	N58°31'20"E
51	C54	8070'00"	25.00	38.27	25.00	35.36	S15°57'42"W
52	C55	11280'00"	30.00	38.91	20.02	38.85	N84°12'10"W
53	C56	10703'21"	200.00	38.02	18.07	37.98	N17°08'29"W
54	C57	7330'38"	25.00	31.86	16.50	28.74	S44°13'01"E
55	C58	1119'50"	250.00	46.37	24.76	46.24	N75°03'56"W

LOT CURVE TABLE

LOT	NO.	DELTA	RADIUS	LENGTH	TANGENT	CHORD	CHL BEARING
56	C59	628'53"	150.00	18.28	8.15	18.27	N26°32'51"W
57	C60	8070'00"	125.00	198.35	125.00	178.78	S75°02'18"E
58	C61	8070'00"	25.00	38.27	25.00	35.36	S14°57'42"W
59	C62	11321'13"	425.00	65.58	42.63	65.43	N14°57'42"W
60	C63	8070'00"	25.00	38.27	25.00	35.36	N43°54'18"E
61	C64	8818'57"	25.00	42.90	28.92	37.83	S88°33'35"W
62	C65	1215'23"	325.00	68.55	34.91	68.42	N81°04'07"W
63	C66	13106'03"	375.00	85.74	43.08	85.58	N53°24'41"E
64	C67	8070'00"	25.00	38.27	25.00	35.36	S75°02'18"E
65	C68	8070'00"	100.00	157.68	100.00	141.42	S14°57'42"W
66	C69	1157'17"	200.00	41.78	20.98	41.88	S88°38'38"W
67	C70	3670'57"	200.00	157.68	71.85	158.24	N88°18'50"W

RIGHT-OF-WAY CURVE TABLE

NO.	DELTA	RADIUS	LENGTH	TANGENT	CHORD	CHL BEARING
C1	2516'45"	100.00	44.12	22.43	43.76	N47°18'20"E
C2	8207'20"	25.00	40.20	25.94	36.00	N11°22'43"W
C3	6235'55"	175.00	181.20	106.40	181.83	N88°44'20"W
C4	2838'20"	175.00	91.60	48.87	90.55	N74°57'22"E
C5	2400'00"	50.00	208.44	---	86.60	N45°34'18"E
C6	25248'08"	50.00	228.35	---	75.00	S14°48'41"W
C7	26248'08"	50.00	228.35	---	75.00	S88°37'42"W
C8	5120'08"	250.00	224.65	120.55	217.17	S85°42'17"W
C9	3830'31"	375.00	252.07	131.01	247.38	N49°14'51"W
C10	11214'57"	190.00	372.23	283.01	315.50	N03°50'11"E
C11	6070'00"	50.00	52.36	28.87	50.03	N82°17'15"W
C12	2400'00"	50.00	208.44	---	86.60	S07°24'45"W
C13	8211'53"	240.00	263.51	144.79	247.91	N45°48'33"E
C14	2818'18"	240.00	118.61	60.52	117.38	N45°48'33"E
C15	2218'38"	200.00	77.93	39.47	77.44	N19°52'30"W
C16	2318'38"	250.00	101.59	51.51	100.89	N69°04'52"W
C17	3541'15"	168.00	164.64	54.08	162.96	S75°17'01"E
C18	5128'08"	200.00	178.72	93.44	173.73	S88°42'17"W
C19	2072'37"	375.00	132.28	68.83	131.59	N48°51'23"E
C20	2034'38"	425.00	152.63	77.15	151.81	N48°40'24"E
C21	2241'49"	150.00	58.42	30.10	58.03	N18°41'24"W

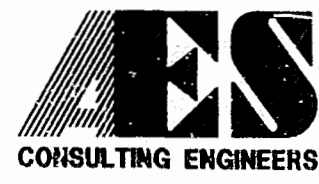
FUTURE DEVELOPMENT CURVE TABLE

FD	NO.	DELTA	RADIUS	LENGTH	TANGENT	CHORD	CHL BEARING
1	C69	2927'27"	25.00	34.52	20.25	31.85	S29°39'24"E
2	C70	1158'08"	250.00	52.22	26.21	52.13	N63°23'27"W

GREENWAY CURVE TABLE

GW	NO.	DELTA	RADIUS	LENGTH	TANGENT	CHORD	CHL BEARING
1	C80	1458'52"	175.00	45.78	23.01	45.63	N44°55'49"W
2	C81	6738'11"	25.00	28.37	16.84	27.71	N28°18'38"E
3	C82	1542'56"	150.00	41.14	20.70	41.01	N15°13'57"W
4	C83	726'54"	375.00	48.53	23.30	48.50	N43°18'22"E
5	C84	720'32"	325.00	40.04	20.05	40.02	N65°01'21"W
6	C85	10174'42"	25.00	44.18	30.48	38.65	N105°24'18"W

THIS SHEET PERTAINS TO
 LOTS 18-32, 41, 67-72



5248 Old Towne Road, Suite 1
 Williamsburg, Virginia 23188
 (757) 253-0040
 Fax (757) 220-8994

FLAT OF SUBDIVISION
 SECTION XII
 LOTS 2-38 AND 41-72
FORD'S COLONY
 © WILLIAMSBURG
 POWHATAN DISTRICT JAMES CITY COUNTY VIRGINIA



No.	DATE	REVISION / COMMENT / NOTE	BY
4	4/15/03	REVISION TO FUTURE DEVELOPMENT	CBR
3	4/10/03	REVISED PER JCC ENVIRONMENTAL REQUEST	CBR
2	3/19/03	REVISED PER JCC COMMENTS DATED 2/27/03	CBR
1	2/19/03	REVISED PER JCC COMMENTS DATED 1/24/03	CBR

Designed	Drawn
CBR	LBA
Scale	Date
1"=100'	12/30/02
Project No.	5652-12
Drawing No.	3 OF 3