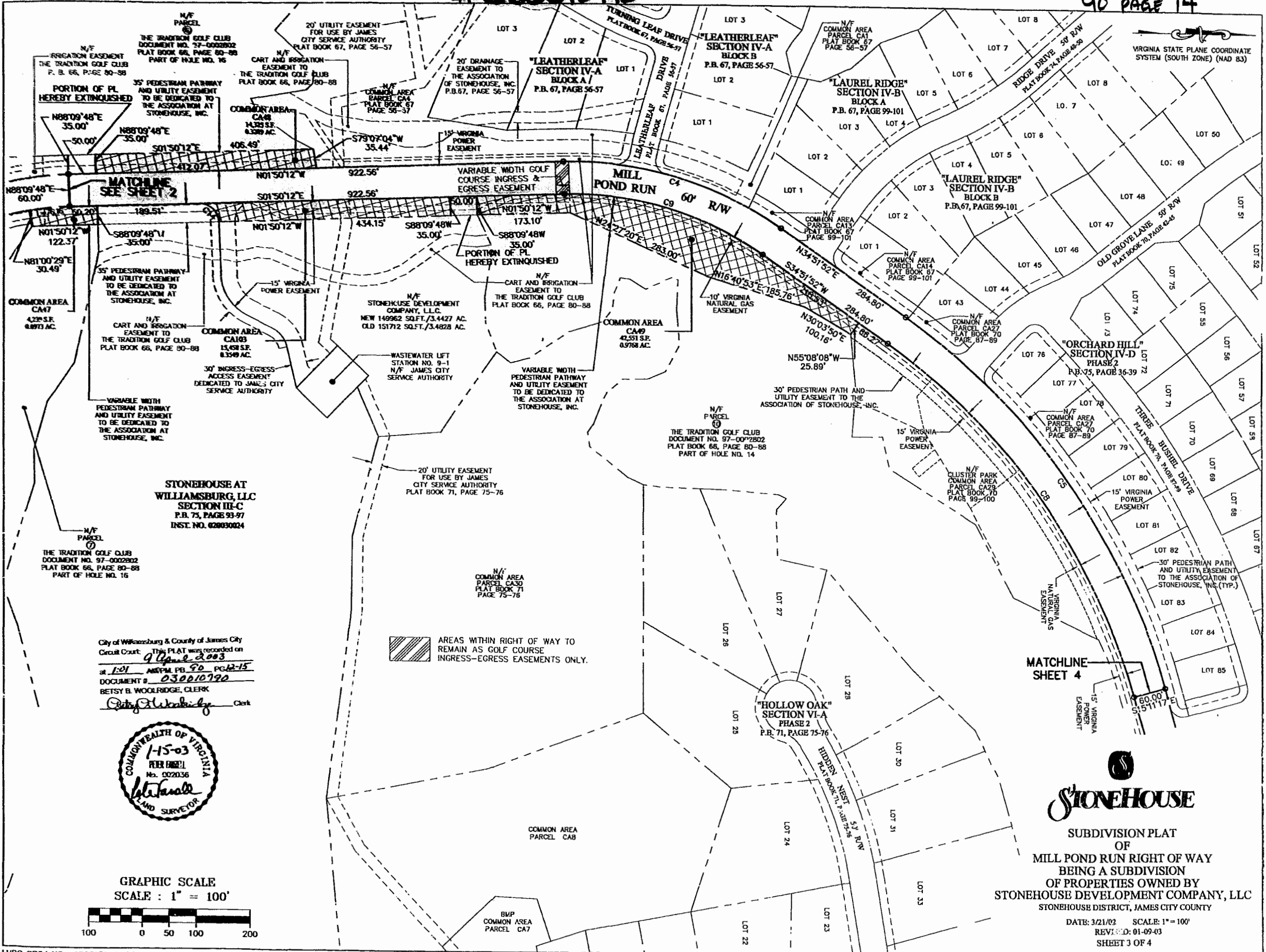


030010790

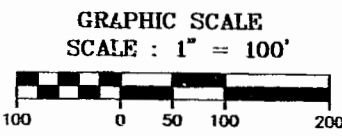
90 PAGE 14



VIRGINIA STATE PLANE COORDINATE SYSTEM (SOUTH ZONE) (NAD 83)

STONEHOUSE AT WILLIAMSBURG, LLC
 SECTION III-C
 P.B. 75, PAGE 93-97
 INST. NO. 020030024

City of Williamsburg & County of James City
 Circuit Court: This PLAT was recorded on
 9 June 2003
 at 1:01 P.M. P.B. 90 PG. 15
 DOCUMENT # 030010790
 BETSY B. WOOLRIDGE, CLERK
Betsy Woolridge Clerk



AREAS WITHIN RIGHT OF WAY TO REMAIN AS GOLF COURSE INGRESS-EGRESS EASEMENTS ONLY.



STONEHOUSE
 SUBDIVISION PLAT
 OF
 MILL POND RUN RIGHT OF WAY
 BEING A SUBDIVISION
 OF PROPERTIES OWNED BY
 STONEHOUSE DEVELOPMENT COMPANY, LLC
 STONEHOUSE DISTRICT, JAMES CITY COUNTY

DATE: 3/21/02 SCALE: 1" = 100'
 REVISION: 01-09-03
 SHEET 3 OF 4