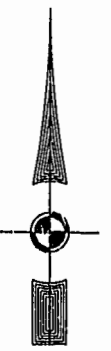


#030008163

89 PAGE 94

EXIST. 20' JAMES CITY COUNTY SERVICE AUTHORITY SAN. SEWER EASEMENT AS SHOWN IN AS-BUILT LOC. TION. D.B. 141 - PG. 388



MATCH LINE - SEE SHEET 5

MATCH LINE - SEE SHEET 2

46-1-01-0-0001 "GREENSPRINGS PLANTATION" (DB 322, PG 254)

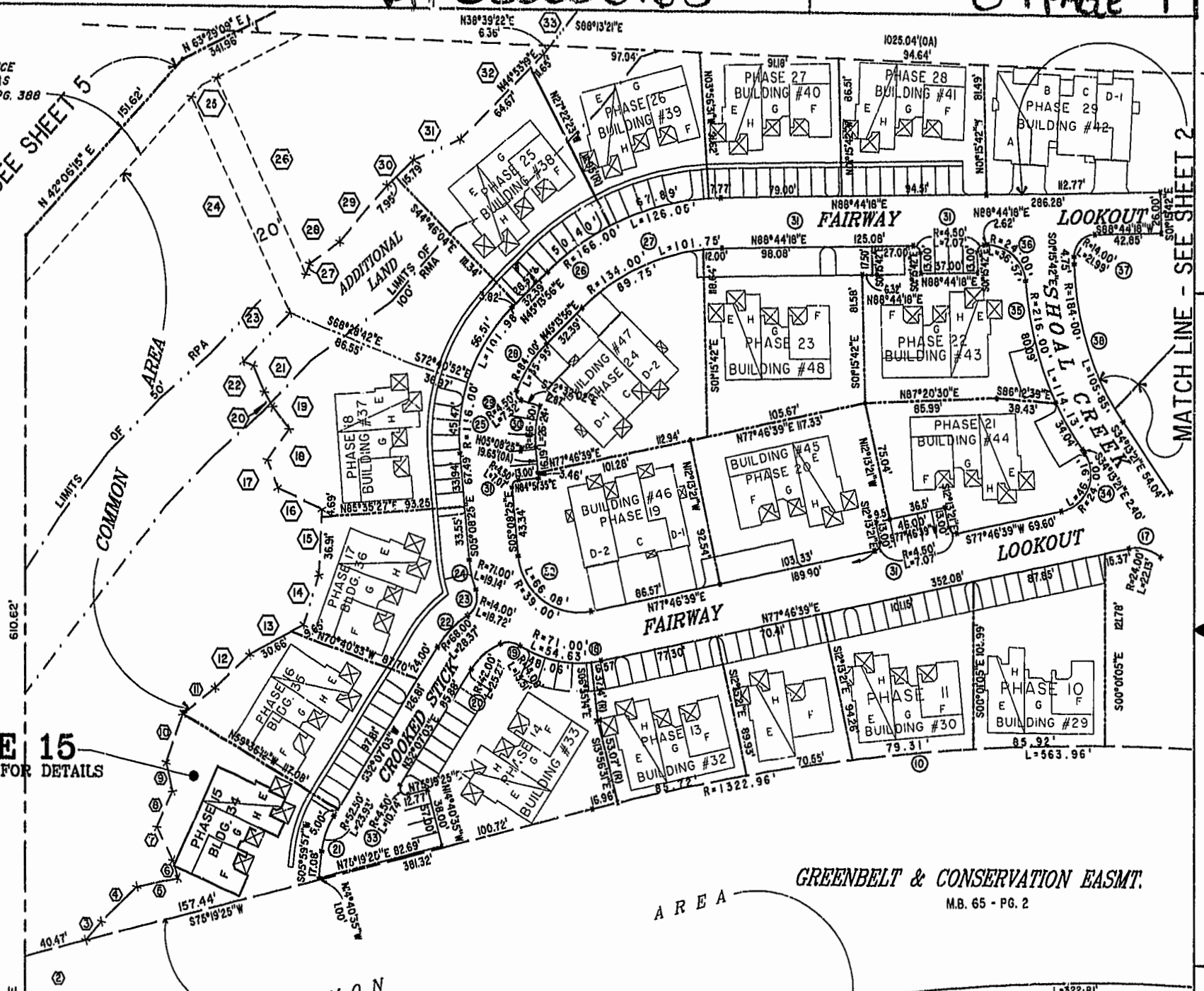
PHASE 15 SEE SHEET 1 FOR DETAILS

City of Williamsburg & County of James City Circuit Court: This PLAT was recorded on 18th March 2003 at 11:30 AM/PM; PB. 89, PG. 91-96 DOCUMENT # 030008163 BETSY B. WOOLRIDGE, CLERK



JOHN TYLER HIGHWAY - VA. STATE ROUTE 5 (M.B. 62 - PG. 28-43) VARIABLE WIDTH R/W

GREENBELT & CONSERVATION EASMT. AREA (M.B. 65 - PG. 2)



Hassell & Rolkes, P.C. Engineers Surveyors Planners Chesapeake, VA 23320 (757) 547-9531	SIZE: C CONTRACT NO: 95-079 DATE: 02/17/03	FILE NAME: S:\PLATS\FAIRWAYS\FAIRWY16.DWG JAMES CITY COUNTY, VIRGINIA	REV. SHEET 4 of 6
--	--	--	-------------------