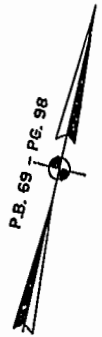


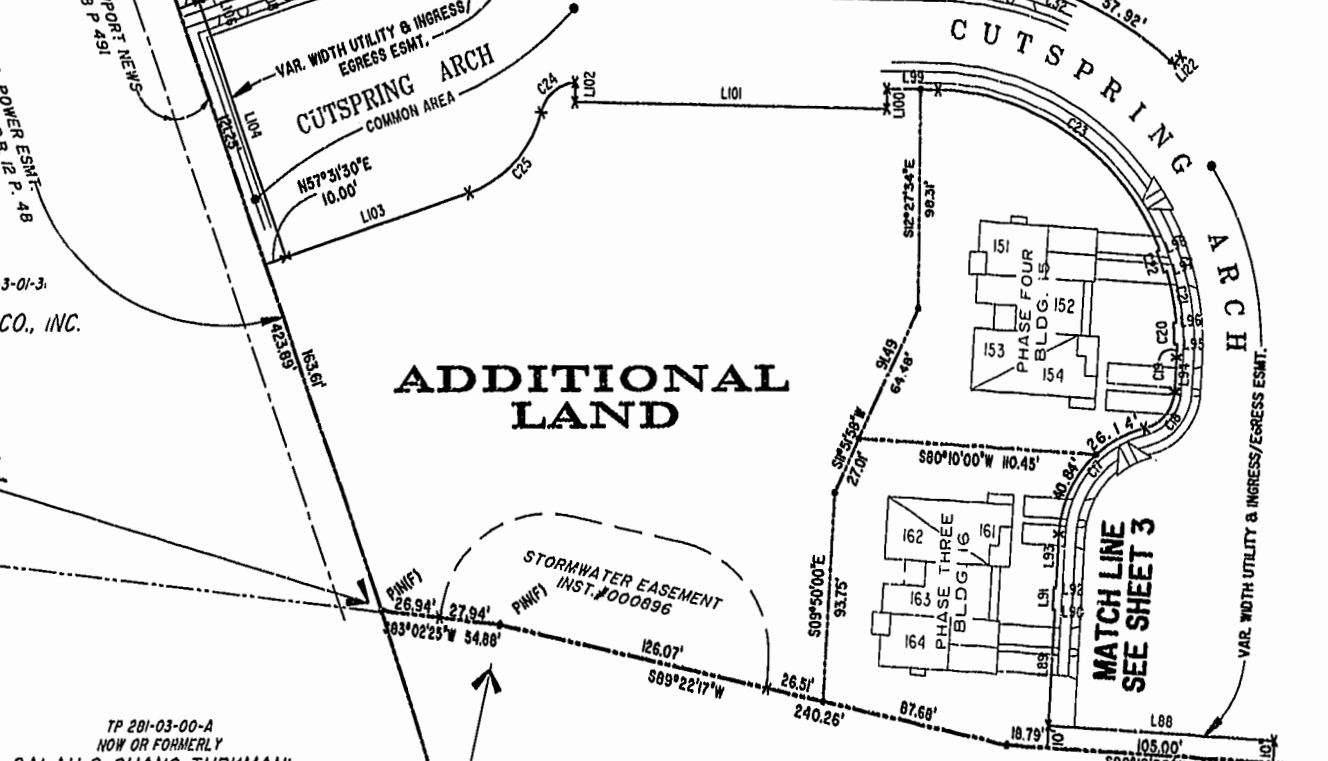
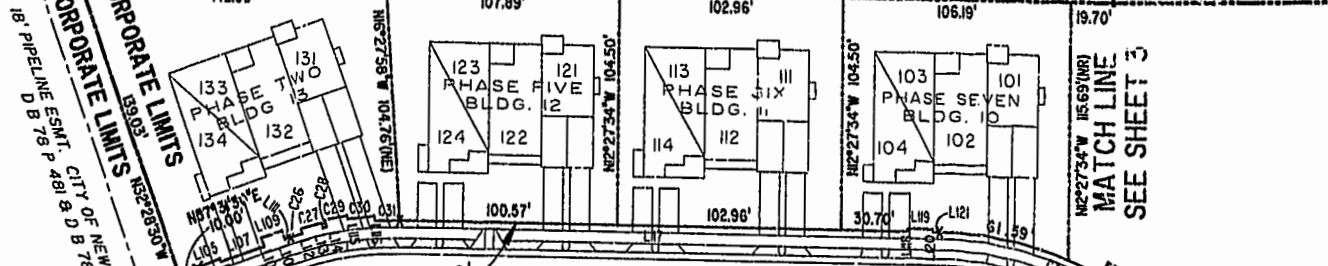
#030578

89 PAGE 89



JAMES CITY COUNTY TP 33-3-01-27
NOW OR FORMERLY
ARTCRAFT - STRATFORD, L.C.
D.B.649 P.470

CITY OF WILLIAMSBURG CORPORATE LIMITS
JAMES CITY COUNTY CORPORATE LIMITS



ADDITIONAL LAND

JAMES CITY COUNTY TP 33-3-01-3
NOW OR FORMERLY
PHILIP RICHARDSON CO., INC.
P.B. 69 P. 98
INST. #980012581

TP 281-03-00-A
NOW OR FORMERLY
SALAH & CHANG TURKMAN
D.B. 94 P. 92

TP 281-10-00-B
NOW OR FORMERLY
752 L.L.C.
INST. #980305

TP 282-08-00-001
NOW OR FORMERLY
752 L.L.C.
INST. #980305

City of Williamsburg & County of James City
Circuit Court: This PLAT was recorded on
19 March 2003
at 11:13 AM/PM, P.B. 89 PAGES 92
DOCUMENT # 030578
BETSY B. WOOLRIDGE, CLERK
Betsy Woolridge Dep. Clerk

GRAPHIC SCALE: 1" = 50'

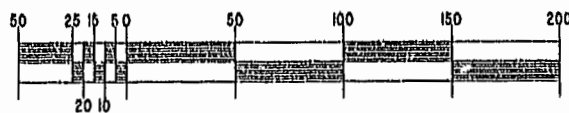


EXHIBIT "A"
CLAIBORNE
(A CONDOMINIUM COMMUNITY)
PHASE THIRTEEN

CITY OF WILLIAMSBURG, VIRGINIA

Hassell & Folkes, P.C. Engineers & Surveyors Chesapeake, VA 23320 (757) 547-9531	SIZE	CONTRACT NO.	FILE NAME	REV.
	C		S:\PLATS\CLAIORNE\PH13-BLDG-20000	
SCALE: 1" = 50'		DATE: 02/13/03	SHEET 4 of 5	

A-1520

A-1520