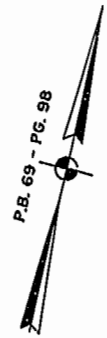


#030578

89 PAGE 87

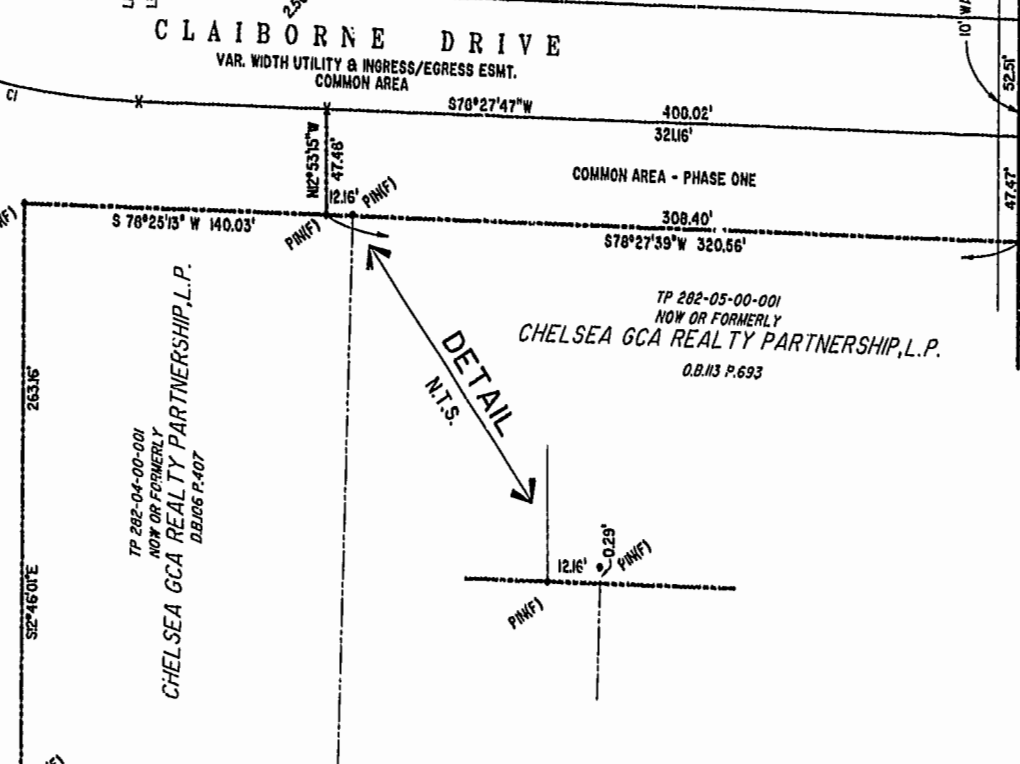
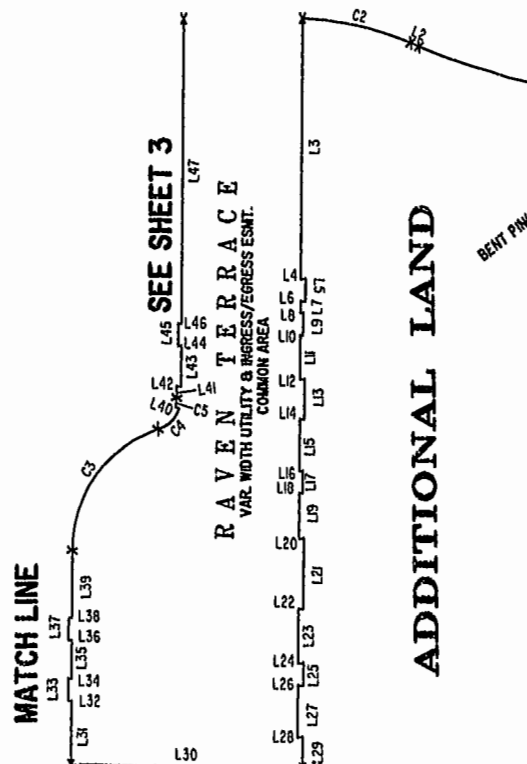
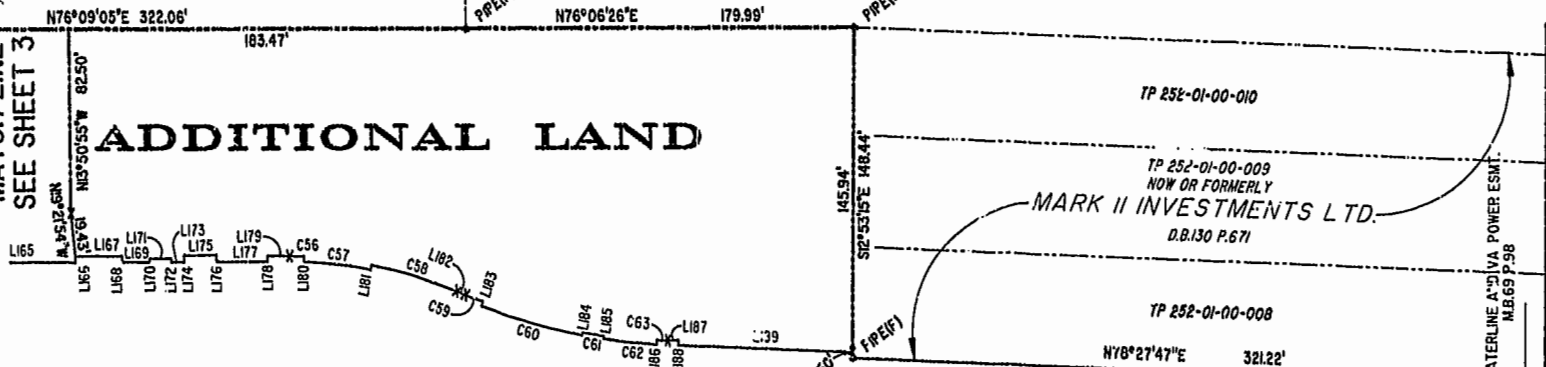
JAMES CITY COUNTY TP 33-3-01-29  
NOW OR FORMERLY  
GARY E. & CATHY L. NESTER  
D.B.619 P.683

JAMES CITY COUNTY TP 33-3-01-24  
NOW OR FORMERLY  
GOLDEN KNIGHTS, INC.  
D.B.568 P.316



MATCH LINE  
SEE SHEET 3

ADDITIONAL LAND



U.S. RTE. 60  
RICHMOND ROAD

P.B. 69 - PG. 98

TP 282-08-00-001  
NOW OR FORMERLY  
752 L.L.C.  
INST. #980305

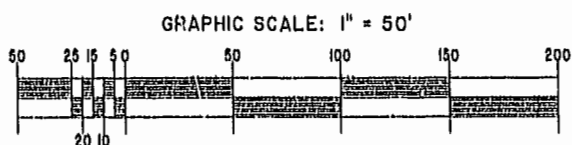
TP 282-04-00-001  
NOW OR FORMERLY  
CHELSEA GCA REALTY PARTNERSHIP, L.P.  
D.B.106 P.407

TP 282-05-00-001  
NOW OR FORMERLY  
CHELSEA GCA REALTY PARTNERSHIP, L.P.  
D.B.113 P.693

City of Williamsburg & County of James City  
Circuit Court: This PLAT was recorded on  
18 March 2003  
at 11:13 AM/PM, PG. 87 of 90  
DOCUMENT # 030578  
BETSY B. WOOLRIDGE, CLERK  
*Betsy Woolridge*, Dep. Clerk

EXHIBIT "A"  
CLAIBORNE  
(A CONDOMINIUM COMMUNITY)  
PHASE THIRTEEN

CITY OF WILLIAMSBURG, VIRGINIA



Hassell & Folkes, P.C. Engineers Surveyors Planners Chesapeake, VA 23320 (757) 547-9531	SIZE C	CONTRACT NO.	FILE NAME S:\PLATS\CLL\CLBORNE\PH-13-BLDG-200A0	REV.
SCALE: 1" = 50'	DATE: 02/13/03	SHEET 2 of 5		

A-1520

A-1520