

#030439

89 PAGE 70

EXHIBIT B-16
SUPPLEMENTAL CONDOMINIUM PLAN
OF
WYNDHAM PLANTATION
CONDOMINIUM

WILLIAMSBURG, VIRGINIA
SCALE: 1"=10' FEBRUARY 25, 2003

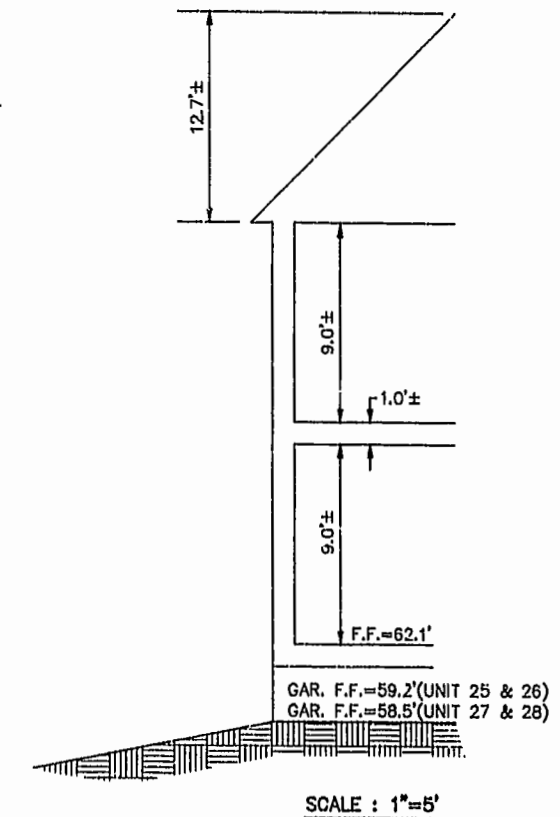
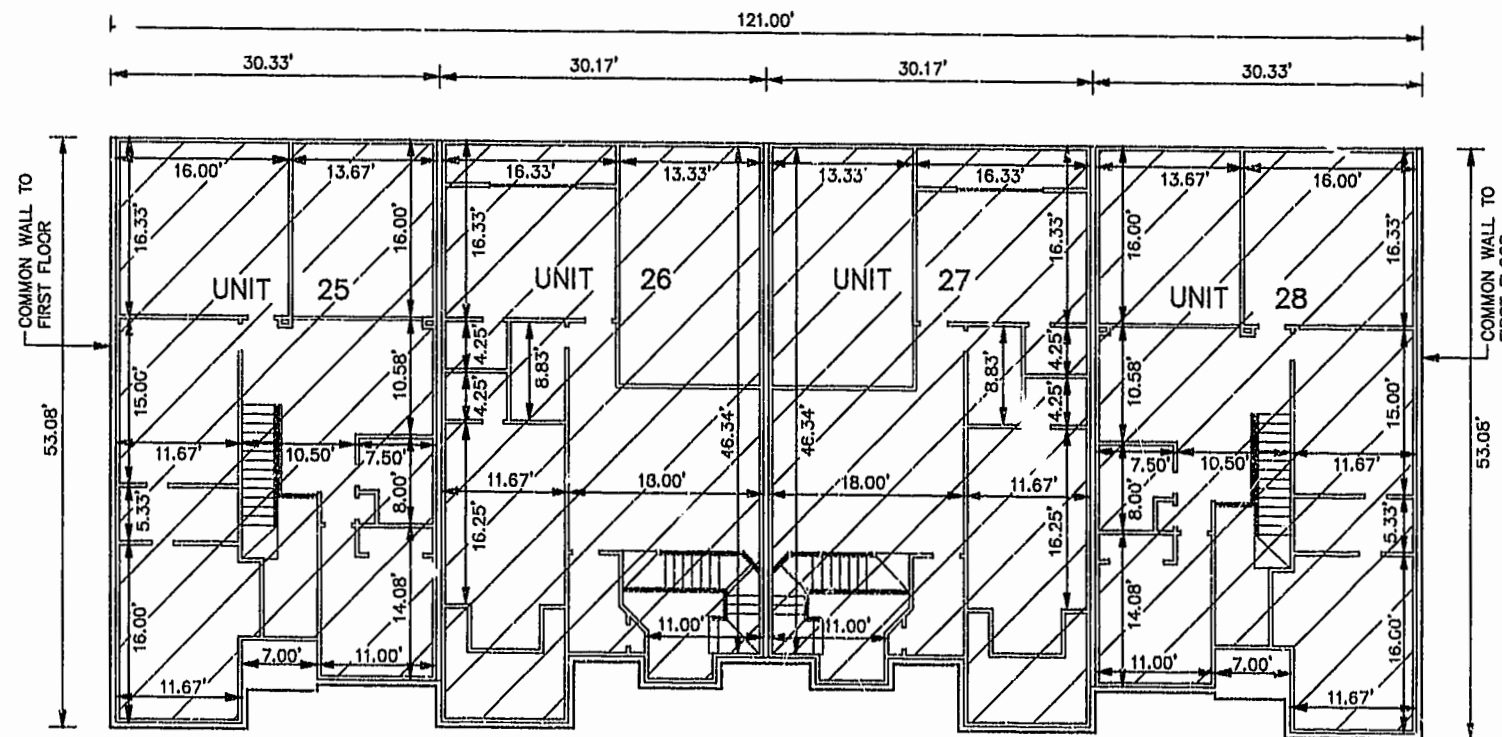
JOHN E. SIRINE AND ASSOCIATES, L.T.D.
SURVEYORS • ENGINEERS • PLANNERS
VIRGINIA BEACH, VIRGINIA
(757) 486-4910

NOTES:

1. BUILDING DIMENSIONS SHOWN HEREON ARE INTERIOR DIMENSIONS. THESE DIMENSIONS ARE IN FEET AND WERE TAKEN FROM PLANS SUPPLIED ENTITLED "WYNDHAM PLANTATION AT WILLIAMSBURG, FLOOR PLANS" BY PROGRESSIVE DESIGNS DATED 11/19/98.
2. INTERIOR UNIT CONFIGURATIONS AND PARTITIONS AS DEPICTED HEREON ARE FOR THE PURPOSE OF ILLUSTRATION ONLY AND MAY NOT REPRESENT THE INTERIOR OF A UNIT AS ACTUALLY CONSTRUCTED.

SECOND FLOOR -- BUILDING 26

SCALE: 1"=10'



GAR. F.F.=59.2'(UNIT 25 & 26)
GAR. F.F.=58.5'(UNIT 27 & 28)

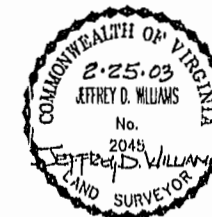
SCALE: 1"=5'

UNIT AREA

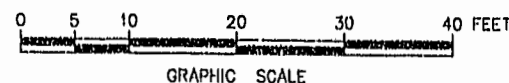
PHASE	UNIT No	UNIT ADDRESS	UNIT AREA
18	25	273 ZELKOVA ROAD	1,853 S.F.
18	26	277 ZELKOVA ROAD	1,957 S.F.
18	27	281 ZELKOVA ROAD	1,957 S.F.
18	28	285 ZELKOVA ROAD	1,853 S.F.

THE UNDERSIGNED CERTIFIES THAT THESE PLANS ARE ACCURATE AND COMPLY WITH THE PROVISIONS OF CODE OF VIRGINIA, SECTION 55-79.58.B AND THAT ALL UNITS OR PORTIONS THEREOF DEPICTED HEREON AND ALL COMMON ELEMENTS HAVE BEEN SUBSTANTIALLY COMPLETED.

SIGNED: Jeffrey D. Williams
JEFFREY D. WILLIAMS, L.S.



City of Williamsburg & County of James City
Circuit Court: This PLAT was recorded on
MARCH 5, 2003
at 2:12 P.M. PG 62-70
DOCUMENT # 030439
BETSY B. WOOLRIDGE, CLERK
Betsy B. Woolridge Clerk



GRAPHIC SCALE