

030006189

89 PAGE 66

STATE OF VIRGINIA COUNTY OF JAMES CITY
IN THE CLERK'S OFFICE OF THE CIRCUIT COURT OF THE
COUNTY OF JAMES CITY THIS 21 DAY OF February
2003, THE MAP SHOWN HEREON WAS PRESENTED AND ADMITTED
TO THE RECORD AS THE LAW DIRECTS. @ 2:04 PM

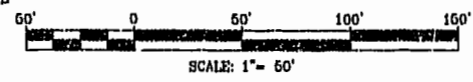
TESTE: Betsy B. Woolridge CLERK
PLAT BOOK 89 PAGE 60-66

NOTE "A": VARIABLE WIDTH J.C.S.A.
UTILITY EASEMENT
NOTE "D": TEMPORARY CONSTRUCTION EASEMENT
TO BE VACATED UPON COMPLETION
OF THE EXTENSION OF SCOTT'S POND
DRIVE

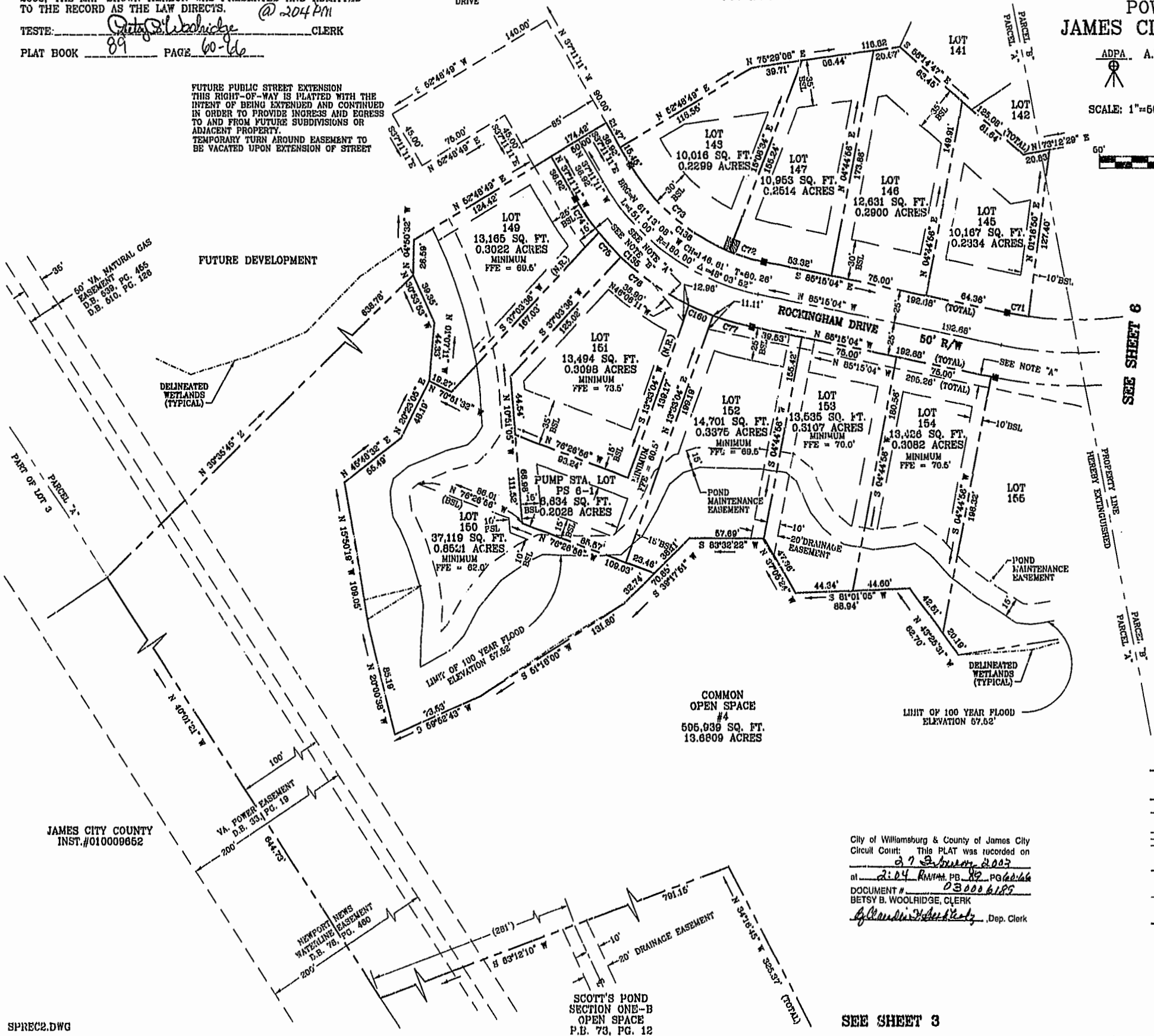
SCOTT'S POND SECTION TWO POWHATAN DISTRICT JAMES CITY COUNTY, VIRGINIA

ADPA A.D. POTTS & ASSOCIATES, INC.
11624 JEFFERSON AVENUE
NEWPORT NEWS, VIRGINIA 23601
PHONE: (757)-595-4610

SCALE: 1"=50' JULY 17, 2002
SHEET 7 OF 7 REV: OCTOBER 14, 2002
REV: DECEMBER 18, 2002



FUTURE PUBLIC STREET EXTENSION
THIS RIGHT-OF-WAY IS PLATTED WITH THE
INTENT OF BEING EXTENDED AND CONTINUED
IN ORDER TO PROVIDE INGRESS AND EGRESS
TO AND FROM FUTURE SUBDIVISIONS OR
ADJACENT PROPERTY.
TEMPORARY TURN AROUND EASEMENT TO
BE VACATED UPON EXTENSION OF STREET



FUTURE DEVELOPMENT

FUTURE DEVELOPMENT

DELINEATED WETLANDS (TYPICAL)

COMMON OPEN SPACE #4
505,939 SQ. FT.
13.6809 ACRES

LIMIT OF 100 YEAR FLOOD
ELEVATION 67.62'

SEE SHEET 6

PROPERTY LINE
HEREBY EXTINGUISHED

LEGEND

- INDICATES CONCRETE MONUMENT
- INDICATES BUILDING SETBACK LINE
- INDICATES DRAINAGE EASEMENT
- INDICATES 10' x 10' J.C.S.A. UTILITY EASEMENT

City of Williamsburg & County of James City
Circuit Court: This PLAT was recorded on
27 February 2003
at 2:04 PM, P.B. 89, P.G. 60-66
DOCUMENT # 030006189
BETSY B. WOOLRIDGE, CLERK
Betsy B. Woolridge, Dep. Clerk

JAMES CITY COUNTY
INST.#010009652

SCOTT'S POND
SECTION ONE-B
OPEN SPACE
P.B. 73, PG. 12

SEE SHEET 3

JOB NO. 02-320 FILE NO. 10-1021

SPREC2.DWG