

#030006189

89 PAGE 64

SCOTT'S POND SECTION TWO POWHATAN DISTRICT JAMES CITY COUNTY, VIRGINIA

- LEGEND
INDICATES CONCRETE MONUMENT
INDICATES BUILDING SETBACK LINE
INDICATES DRAINAGE EASEMENT
INDICATES 10' x 10' J.C.S.A. UTILITY EASEMENT

NOTE 'A': VARIABLE WIDTH J.C.S.A. UTILITY EASEMENT
NOTE 'B': TEMPORARY CONSTRUCTION EASEMENT TO BE VACATED UPON COMPLETION OF THE EXTENSION OF SCOTT'S POND DRIVE

STATE OF VIRGINIA COUNTY OF JAMES CITY
IN THE CLERK'S OFFICE OF THE CIRCUIT COURT OF THE COUNTY OF JAMES CITY THIS 27 DAY OF February 2003, THE MAP SHOWN HEREON WAS PRESENTED AND ADMITTED TO THE RECORD AS THE LAW DIRECTS. @ 2:04 PM

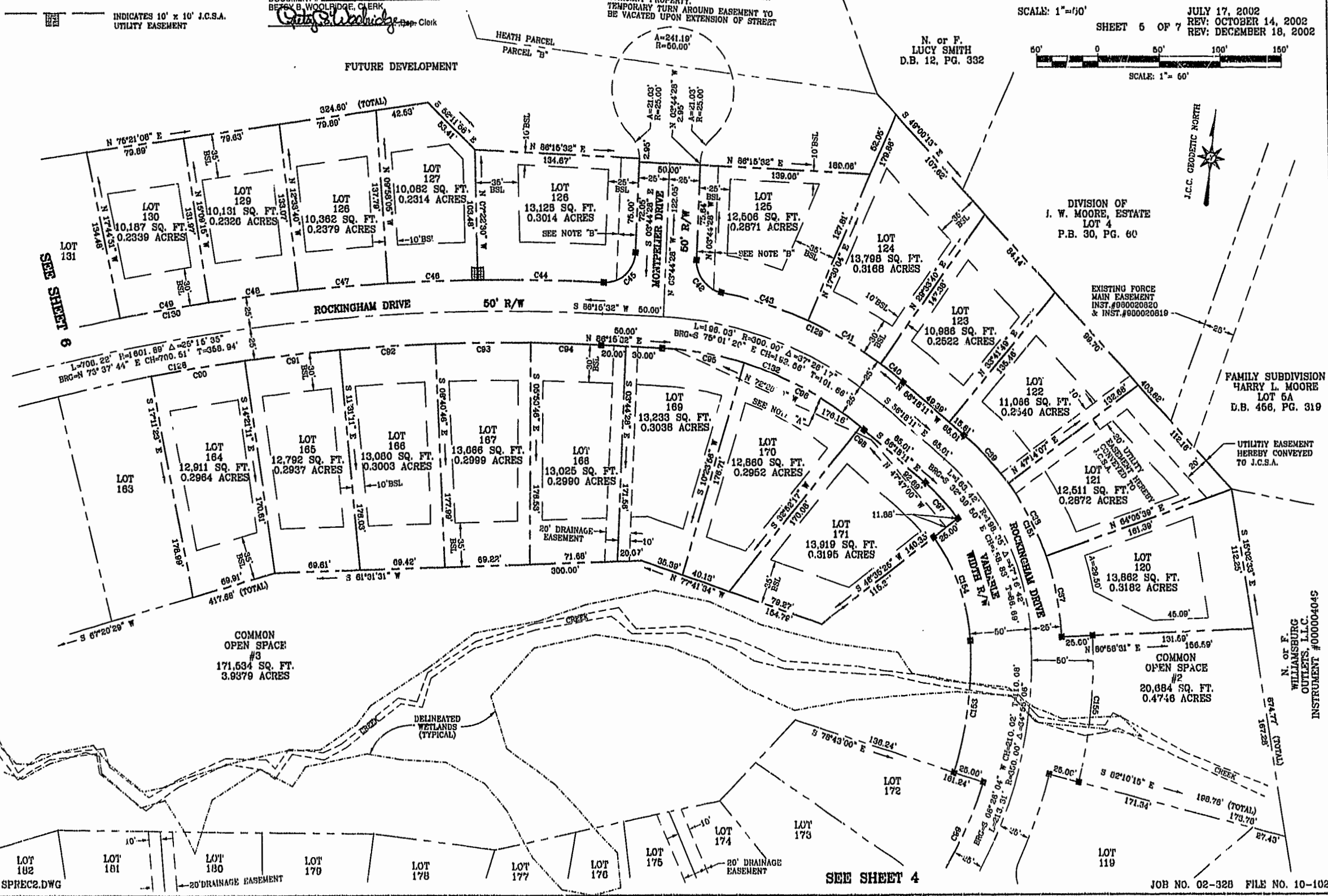
TESTE: [Signature] CLERK
PLAT BOOK 89 PAGE 60-66

City of Williamsburg & County of James City Circuit Court: This PLAT was recorded on 27 February 2003 at 2:14 AM/PM, PB 89 PAGE 60-66 DOCUMENT # 030006189 BEBEY B. WOOLRIDGE, CLERK [Signature]

FUTURE PUBLIC STREET EXTENSION THIS RIGHT-OF-WAY IS PLATTED WITH THE INTENT OF BEING EXTENDED AND CONTINUED IN ORDER TO PROVIDE INGRESS AND EGRESS TO AND FROM FUTURE SUBDIVISIONS OR ADJACENT PROPERTY. TEMPORARY TURN AROUND EASEMENT TO BE VACATED UPON EXTENSION OF STREET

ADFA A.D. POTTS & ASSOCIATES, INC. 11524 JEFFERSON AVENUE NEWPORT NEWS, VIRGINIA 23601 PHONE: (757)-695-4610

SCALE: 1"=60' JULY 17, 2002 REV: OCTOBER 14, 2002 SHEET 6 OF 7 REV: DECEMBER 18, 2002



SPREC2.DWG

SEE SHEET 4

JOB NO. 02-328 FILE NO. 10-1021

N. of F. WILLIAMSBURG OUTLETS, L.L.C. INSTRUMENT #000004045