

#030006189

89 PAGE 63

STATE OF VIRGINIA COUNTY OF JAMES CITY
IN THE CLERK'S OFFICE OF THE CIRCUIT COURT OF THE
COUNTY OF JAMES CITY THIS 27 DAY OF February
2003, THE MAP SHOWN HEREON WAS PRESENTED AND ADMITTED
TO THE RECORD AS THE LAW DIRECTS. @ 2:04 PM

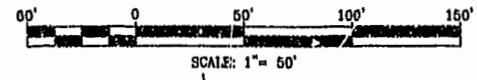
City of Williamsburg & County of James City
Circuit Court: This PLAT was recorded on
27 Feb 2003
at 2:04 PM/PM. PB 89 PG 63/66
DOCUMENT # 030006189
BETSY B. WOOLRIDGE, CLERK
Betsy B. Woolridge Clerk

NOTE "A": VARIABLE WIDTH J.C.S.A.
UTILITY EASEMENT
NOTE "C": PROPERTY LINE HEREBY
EXTINGUISHED

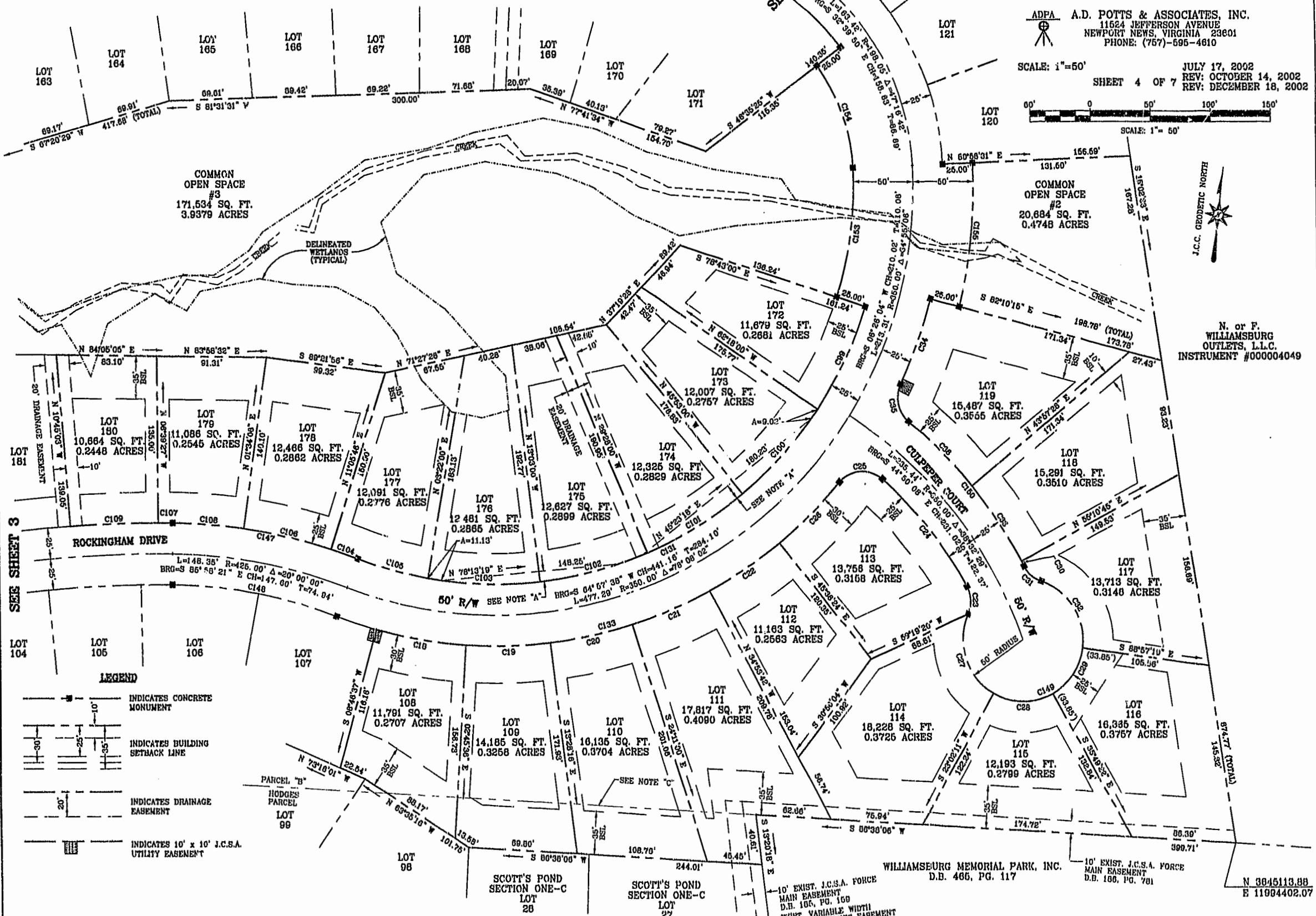
SCOTT'S POND
SECTION TWO
POWHATAN DISTRICT
JAMES CITY COUNTY, VIRGINIA

ADPA A.D. POTTS & ASSOCIATES, INC.
11624 JEFFERSON AVENUE
NEWPORT NEWS, VIRGINIA 23601
PHONE: (757)-695-4610

SCALE: 1"=50'
SHEET 4 OF 7
JULY 17, 2002
REV: OCTOBER 14, 2002
REV: DECEMBER 18, 2002



N. or F.
WILLIAMSBURG
OUTLETS, L.L.C.
INSTRUMENT #000004049



SEE SHEET 3

SEE SHEET 5

LEGEND

- INDICATES CONCRETE MONUMENT
- INDICATES BUILDING SETBACK LINE
- INDICATES DRAINAGE EASEMENT
- INDICATES 10' x 10' J.C.S.A. UTILITY EASEMENT

SPREC2.DWG

JOB NO. 02-328 FILE NO. 10-1021