

#030005383

89 PAGE 4/6



CONDOMINIUM PLAT  
OF  
SECTION 1B  
(A PORTION OF PHASE II)  
BRANDON WOODS  
JAMES CITY COUNTY, VIRGINIA  
SCALE: 1"=40' DATE: 2/7/03  
REVISED: 2/14/03  
SHEET 2 OF 4

SECTION 2  
PB. 80 PGS. 22-25

SECTION 1B

UNIT 17 UNIT 16 UNIT 15 UNIT 14

COMMON ELEMENT SECTION 1

CHESLEA LANDING

(COMMON ELEMENT)

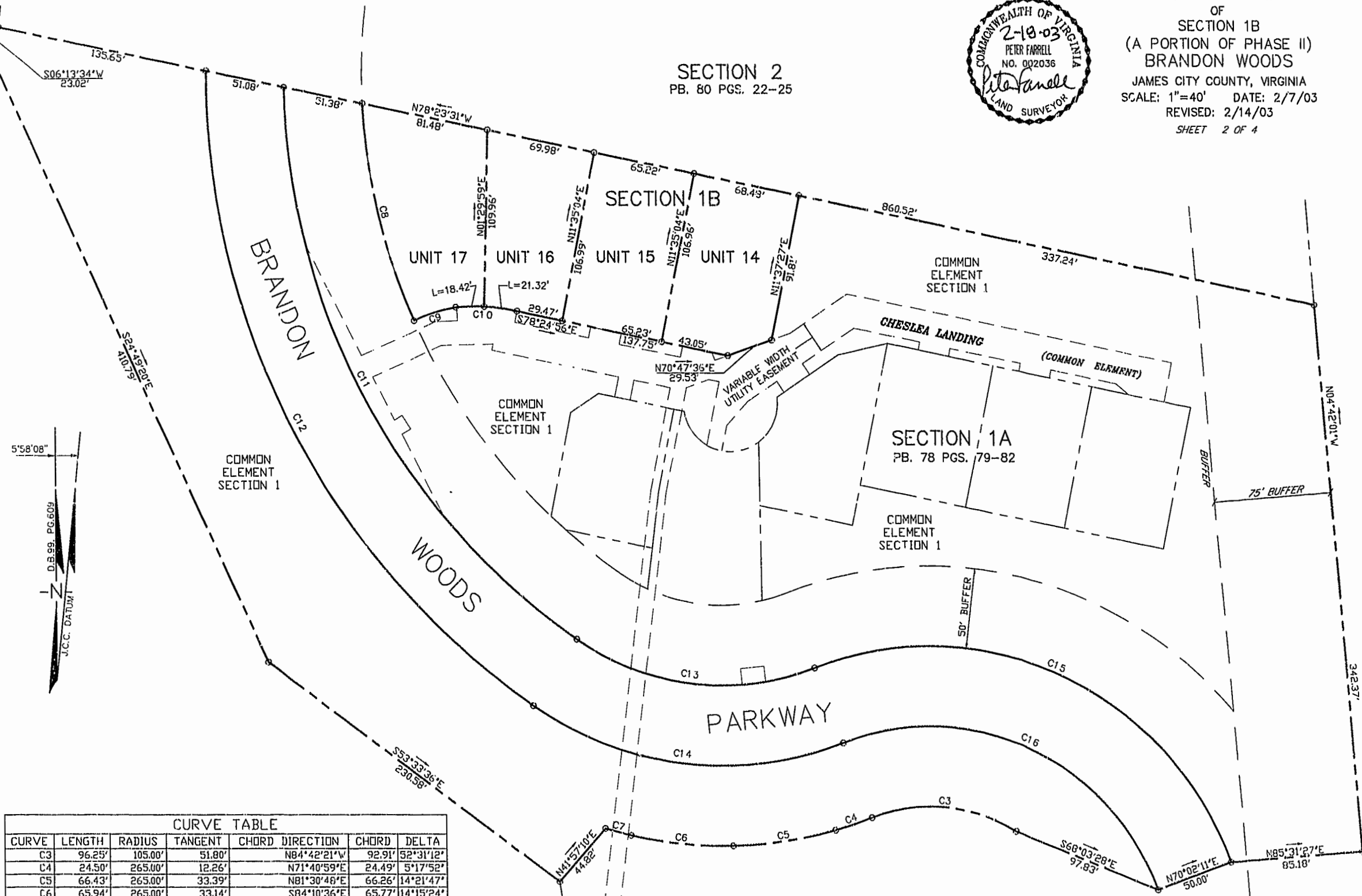
SECTION 1A  
PB. 78 PGS. 79-82

COMMON ELEMENT SECTION 1

PARKWAY

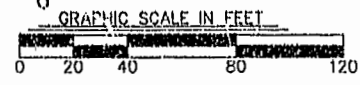
BRANDON

WOODS



CURVE TABLE						
CURVE	LENGTH	RADIUS	TANGENT	CHORD	DIRECTION	DELTA
C3	96.25'	105.00'	51.80'		N84°42'21"W	92.91' 52°31'12"
C4	24.50'	265.00'	12.26'		N71°40'59"E	24.49' 5°17'52"
C5	66.43'	265.00'	33.39'		N81°30'46"E	66.26' 14°21'47"
C6	65.94'	265.00'	33.14'		S84°10'36"E	65.77' 14°15'24"
C7	16.87'	265.00'	8.44'		S75°13'29"E	16.87' 3°38'51"
C8	139.59'	375.00'	70.61'		S13°15'12"E	138.79' 21°19'41"
C9	28.05'	106.74'	14.10'		S72°52'28"W	27.97' 15°03'13"
C10	39.74'	115.08'	20.07'		N86°21'51"W	39.54' 19°47'06"
C11	405.84'	425.00'	219.89'		S26°14'48"E	390.60' 54°42'48"
C12	464.65'	475.00'	252.81'		S27°34'48"E	446.34' 56°02'49"
C13	159.43'	165.00'	66.56'		S83°17'05"E	153.30' 55°21'45"
C14	207.75'	215.00'	112.79'		S83°17'05"E	199.76' 55°21'45"
C15	325.60'	205.00'	208.62'		N65°27'53"W	292.44' 91°00'08"
C16	246.18'	155.00'	157.74'		N65°27'53"W	221.11' 91°00'08"

City of Williamsburg & County of James City  
Circuit Court: This PLAT was recorded on  
20 February 2003  
at 9:57 AM/PM, PB 89, PGS 45-48  
DOCUMENT # 030005383  
BETSY B. WOOLDRIDGE, CLERK  
*Betsy Wooldridge* (Rep. Clerk)



**LANDMARK**  
**DESIGN GROUP**  
Engineers • Planners • Surveyors  
Landscape Architects • Environmental Consultants  
4029 IRONBOUND ROAD SUITE 100  
WILLIAMSBURG, VA 23188  
TEL. (757) 253-2975 FAX(757) 229-0049

DRAWN BY: LFV  
CHKD. BY: PF

PROJ. NO.: 1980074-000.49  
DWG. NO.: 14175W