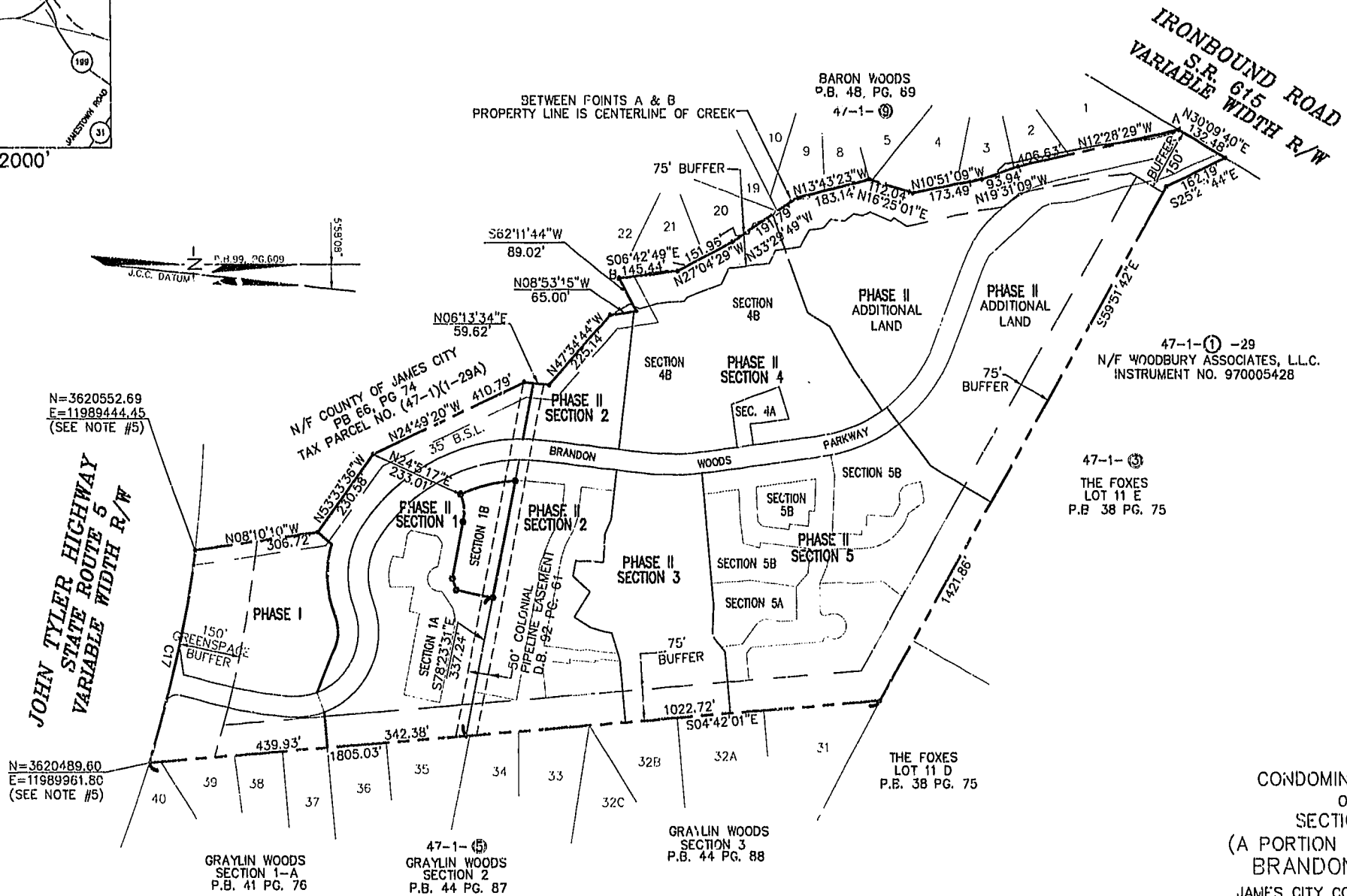
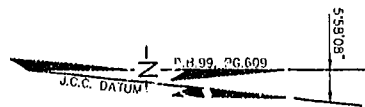


CURVE TABLE						
CURVE	LENGTH	RADIUS	TANGENT	CHORD BEARING	CHORD	DELTA
C17	521.88'	2904.79'	261.65'	N77°04'44"W	521.18'	10°17'38"



N=3620552.69  
E=11989444.45  
(SEE NOTE #5)

N=3620489.60  
E=11989961.80  
(SEE NOTE #5)

JOHN TYLER HIGHWAY  
STATE ROUTE 5  
VARIABLE WIDTH R/W

47-1-①-29  
N/F WOODBURY ASSOCIATES, L.L.C.  
INSTRUMENT NO. 970005428

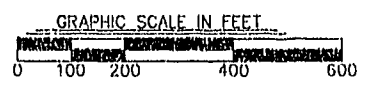
47-1-③  
THE FOXES  
LOT 11 E  
P.B. 38 PG. 75

THE FOXES  
LOT 11 D  
P.B. 38 PG. 75

CONDOMINIUM PLAT  
OF  
SECTION 1B  
(A PORTION OF PHASE II)  
BRANDON WOODS  
JAMES CITY COUNTY, VIRGINIA  
SCALE: 1"=200' DATE: 2/7/03  
REVISED 2/14/03

SHEET 1 OF 4

**LANDMARK**  
**DESIGN GROUP**  
Engineers • Planners • Surveyors  
Landscape Architects • Environmental Consultants  
4029 IRONBOUND ROAD SUITE 100  
WILLIAMSBURG, VA 23188  
TEL (757) 253-2975 FAX(757) 229-0049

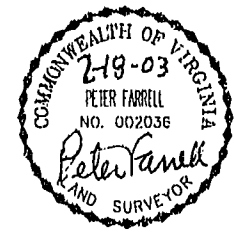


STATE OF VIRGINIA, COUNTY OF JAMES CITY

IN THE CLERK'S OFFICE OF THE CIRCUIT COURT THE PLAT SHOWN HEREON WAS PRESENTED AND ADMITTED TO RECORD  
BY *Peter Farrell* 2003 AS THE LAW DIRECTS.

TESTEE: *Cathy Woodbridge* @ 9:57AM CLERK

PLAT BOOK 85 PAGE 45-48



City of Williamsburg & County of James City  
Circuit Court: This PLAT was recorded on  
20 February 2003  
at 9:57 AM P.M. P.B. 84 PG. 45-48  
DOCUMENT # 030005383  
*Cathy Woodbridge* Clerk

DRAWN BY: LFV  
CHKD. BY: PF

PROJ. NO.: 1930074-000.049  
DWG. NO.: 14176W