

LOT CURVE TABLE with columns: LOT NO., DELTA, RADIUS, ARC, TANGENT, CHORD, CHORD BEARING. Contains data for lots 1 through 16.

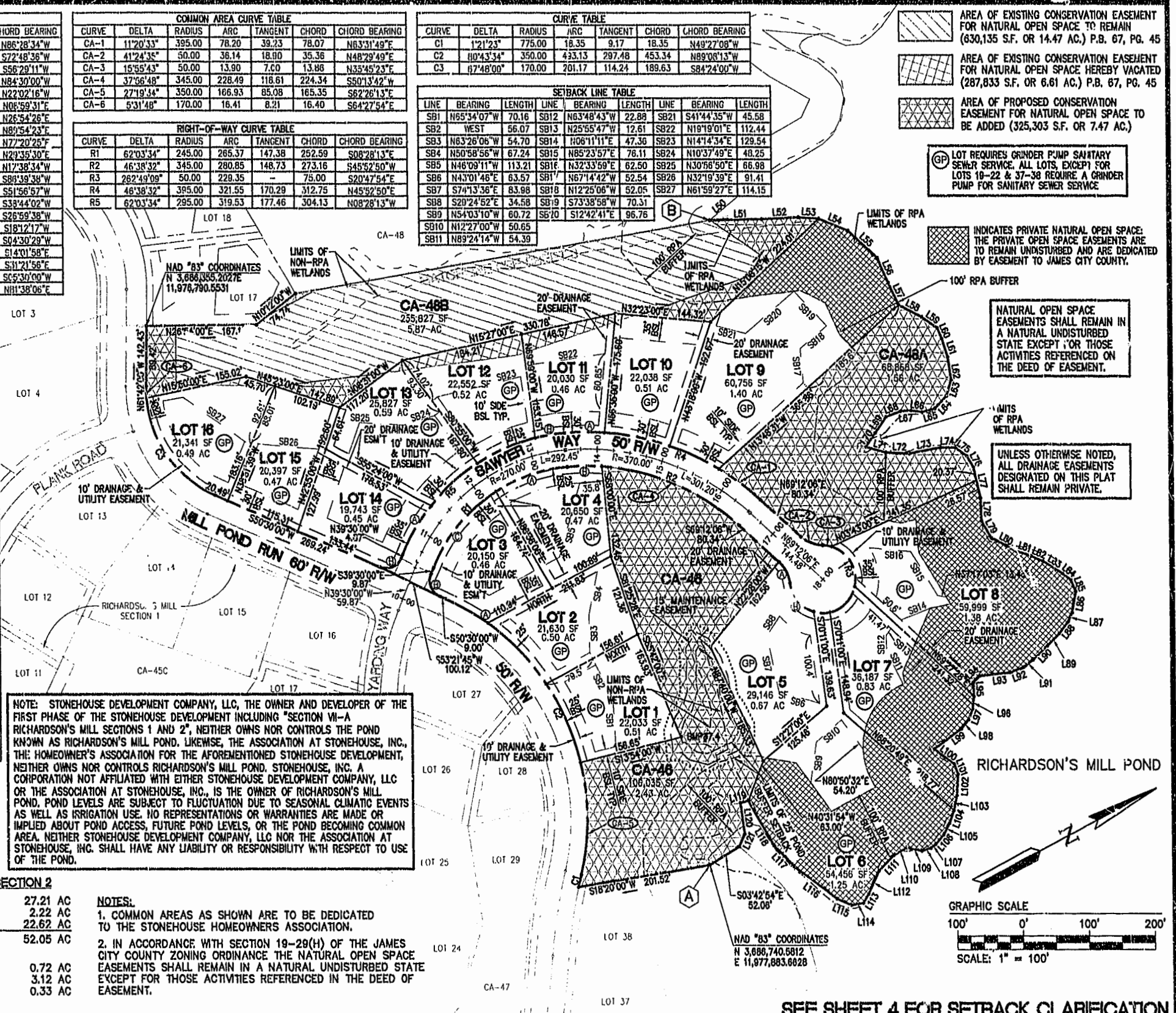
COMMON AREA CURVE TABLE with columns: CURVE, DELTA, RADIUS, ARC, TANGENT, CHORD, CHORD BEARING. Contains data for common areas CA-1 through CA-6.

RIGHT-OF-WAY CURVE TABLE with columns: CURVE, DELTA, RADIUS, ARC, TANGENT, CHORD, CHORD BEARING. Contains data for right-of-way curves R1 through R5.

CURVE TABLE with columns: CURVE, DELTA, RADIUS, ARC, TANGENT, CHORD, CHORD BEARING. Contains data for curves C1 through C3.

SETBACK LINE TABLE with columns: LINE, BEARING, LENGTH, LINE, BEARING, LENGTH, LINE, BEARING, LENGTH. Contains data for setback lines SB1 through SB11.

LINE TABLE with columns: LINE, BEARING, LENGTH, LINE, BEARING, LENGTH. Contains data for lines L51 through L86.



NOTE: STONEHOUSE DEVELOPMENT COMPANY, LLC, THE OWNER AND DEVELOPER OF THE FIRST PHASE OF THE STONEHOUSE DEVELOPMENT INCLUDING "SECTION VII-A RICHARDSON'S MILL SECTIONS 1 AND 2", NEITHER OWNS NOR CONTROLS THE POND KNOWN AS RICHARDSON'S MILL POND. LIKEWISE, THE ASSOCIATION AT STONEHOUSE, INC., THE HOMEOWNER'S ASSOCIATION FOR THE FOREMENTIONED STONEHOUSE DEVELOPMENT, NEITHER OWNS NOR CONTROLS RICHARDSON'S MILL POND. STONEHOUSE, INC. A CORPORATION NOT AFFILIATED WITH EITHER STONEHOUSE DEVELOPMENT COMPANY, LLC OR THE ASSOCIATION AT STONEHOUSE, INC., IS THE OWNER OF RICHARDSON'S MILL POND. POND LEVELS ARE SUBJECT TO FLUCTUATION DUE TO SEASONAL CLIMATIC EVENTS AS WELL AS IRRIGATION USE. NO REPRESENTATIONS OR WARRANTIES ARE MADE OR IMPLIED ABOUT POND ACCESS, FUTURE POND LEVELS, OR THE POND BECOMING COMMON AREA. NEITHER STONEHOUSE DEVELOPMENT COMPANY, LLC NOR THE ASSOCIATION AT STONEHOUSE, INC. SHALL HAVE ANY LIABILITY OR RESPONSIBILITY WITH RESPECT TO USE OF THE POND.

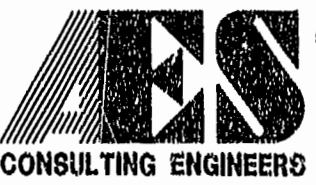
AREA OF EXISTING CONSERVATION EASEMENT FOR NATURAL OPEN SPACE TO REMAIN (630,135 S.F. OR 14.47 AC.) P.B. 67, PG. 45
AREA OF EXISTING CONSERVATION EASEMENT FOR NATURAL OPEN SPACE HEREBY VACATED (287,833 S.F. OR 6.61 AC.) P.B. 67, PG. 45
AREA OF PROPOSED CONSERVATION EASEMENT FOR NATURAL OPEN SPACE TO BE ADDED (325,303 S.F. OR 7.47 AC.)
LOT REQUIRES GRINDER PUMP SANITARY SEWER SERVICE, ALL LOTS, EXCEPT FOR LOTS 19-22 & 37-38 REQUIRE A GRINDER PUMP FOR SANITARY SEWER SERVICE.
INDICATES PRIVATE NATURAL OPEN SPACE: THE PRIVATE OPEN SPACE EASEMENTS ARE TO REMAIN UNDISTURBED AND ARE DEDICATED BY EASEMENT TO JAMES CITY COUNTY.
NATURAL OPEN SPACE EASEMENTS SHALL REMAIN IN A NATURAL UNDISTURBED STATE EXCEPT FOR THOSE ACTIVITIES REFERENCED ON THE DEED OF EASEMENT.
UNLESS OTHERWISE NOTED, ALL DRAINAGE EASEMENTS DESIGNATED ON THIS PLAT SHALL REMAIN PRIVATE.

BOUNDARY LINES BETWEEN (A) AND (B) ARE 5' ABOVE POND HIGH WATER MARK (P.B. 66, PG. 80-88)

AREA TABULATION RICHARDSON'S MILL SECTION 2
AREA OF RESIDENTIAL LOTS 1,185,103 SF 27.21 AC
AREA OF PUBLIC RIGHT-OF-WAY 96,534 SF 2.22 AC
AREA OF COMMON AREA 985,327 SF 22.62 AC
TOTAL AREA SUBDIVIDED 2,267,294 SF 52.05 AC
NUMBER OF RESIDENTIAL LOTS 38
AVERAGE LOT SIZE 31,187 SF 0.72 AC
LARGEST LOT (LOT 28) 135,799 SF 3.12 AC
SMALLEST LOT (LOT 24) 14,357 SF 0.33 AC
GROSS LOTS PER ACRE 0.73 LOTS / ACRE

NOTES:
1. COMMON AREAS AS SHOWN ARE TO BE DEDICATED TO THE STONEHOUSE HOMEOWNERS ASSOCIATION.
2. IN ACCORDANCE WITH SECTION 19-29(H) OF THE JAMES CITY COUNTY ZONING ORDINANCE THE NATURAL OPEN SPACE EASEMENTS SHALL REMAIN IN A NATURAL UNDISTURBED STATE EXCEPT FOR THOSE ACTIVITIES REFERENCED IN THE DEED OF EASEMENT.

SEE SHEET 4 FOR SETBACK CLARIFICATION



5248 Olde Towne Road, Suite 1
Williamsburg, Virginia 23188
(757) 253-0040
Fax (757) 220-8994

PLAT OF SUBDIVISION SECTION VII-A 'RICHARDSON'S MILL' SECTION 2 AT STONEHOUSE FOR STONEHOUSE DEVELOPMENT COMPANY, LLC. STONEHOUSE DISTRICT JAMES CITY COUNTY VIRGINIA



Table with columns: No., DATE, REVISION / COMMENT / NOTE, BY. Includes recording information: City of Williamsburg & County of James City Circuit Court, This PLAT was recorded on 23 January 2003 at 11:37 AM/PM P.B. 67 PG. 25-32. DOCUMENT # 030002234. Betsy B. Woolridge, Clerk. Project No. 9028-13. Draw'n g No. 2 OF 5.