

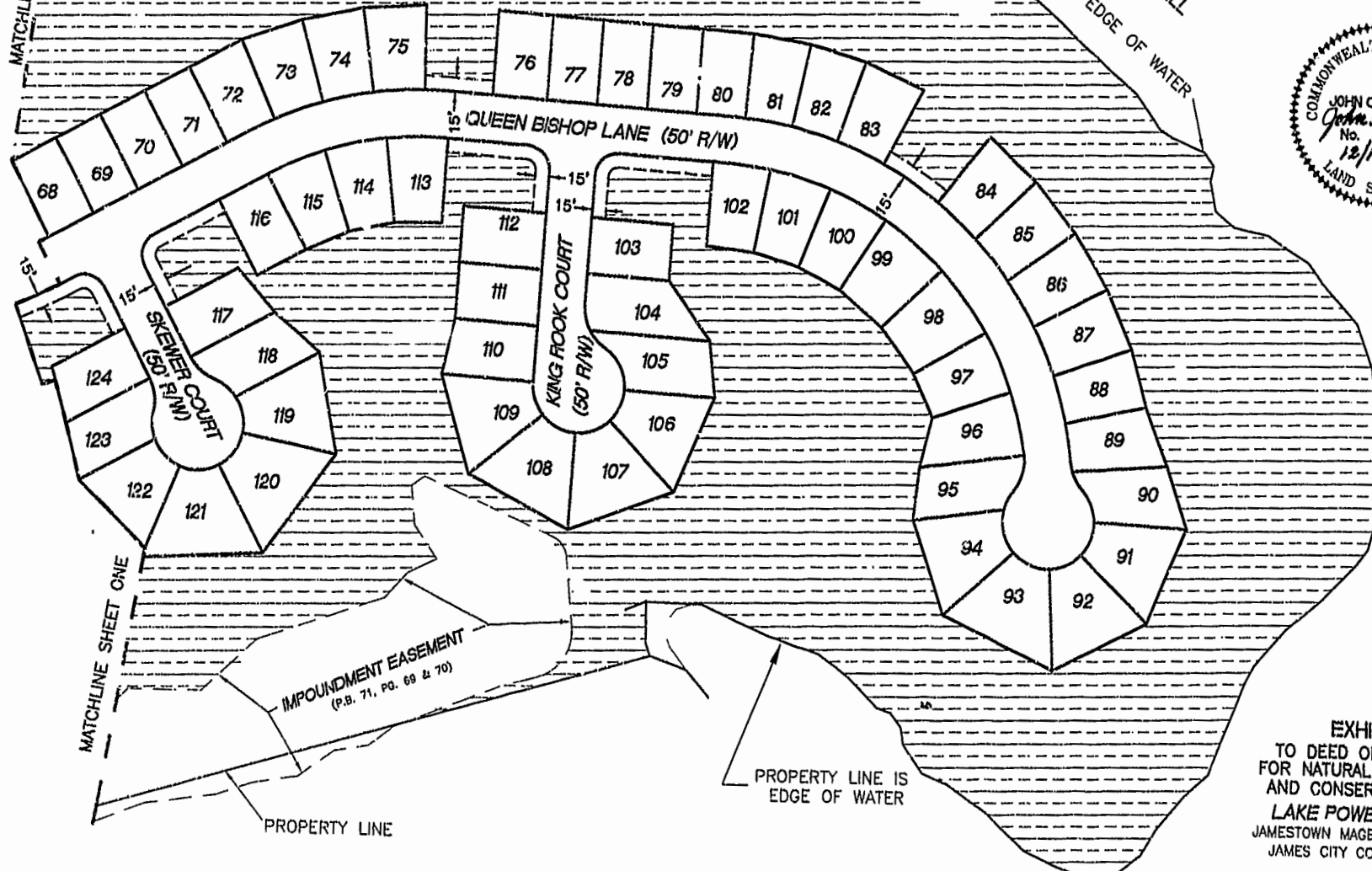
PROPERTY LINE IS C/L STREAM
ROLLING WOODS
(M.B. 46, PG. 81)

NATURAL OPEN SPACE AND
CONSERVATION AREA

P.B. 16, PG. 20

MATCHLINE SHEET ONE

PROPERTY LINE IS EDGE OF WATER
LAKE POWELL



IMPOUNDMENT EASEMENT
(P.B. 71, PG. 69 & 70)

PROPERTY LINE IS
EDGE OF WATER

PROPERTY LINE

EXHIBIT 1
TO DEED OF EASEMENT
FOR NATURAL OPEN SPACE
AND CONSERVATION AREA
LAKE POWELL FOREST
JAMESTOWN MAGISTERIAL DISTRICT
JAMES CITY COUNTY, VIRGINIA



NOW OR FORMERLY
LAKE POWELL POINTE SUBDIVISION

City of Williamsburg & County of James City
Circuit Court: This PLAT was recorded on
22 January 2003
at *2:20* AM P.M. P.B. *810* PG. *27+28*
DOCUMENT # *030001976*
HELSY B. WOOLRIDGE, CLERK
Helsy B. Woolridge, Dep. Clerk

SHEET 2 OF 2

SCALE : 1" = 100' DEC. 19, 2002
HORTON & DODD, P.C.
SURVEYORS, ENGINEERS & PLANNERS
300 GEORGE WASHINGTON HWY. N.
CHESAPEAKE, VIRGINIA
(757) 481-4535 www.hortondodd.com
COPYRIGHT (c), HORTON & DODD, P.C. ALL RIGHTS RESERVED. REPRODUCTION OR USE OF THE CONTENTS OF THIS DOCUMENT, OR ADDITIONS OR DELETIONS TO THIS DOCUMENT, IN WHOLE OR IN PART, WITHOUT WRITTEN CONSENT OF HORTON & DODD, P.C. IS PROHIBITED.