

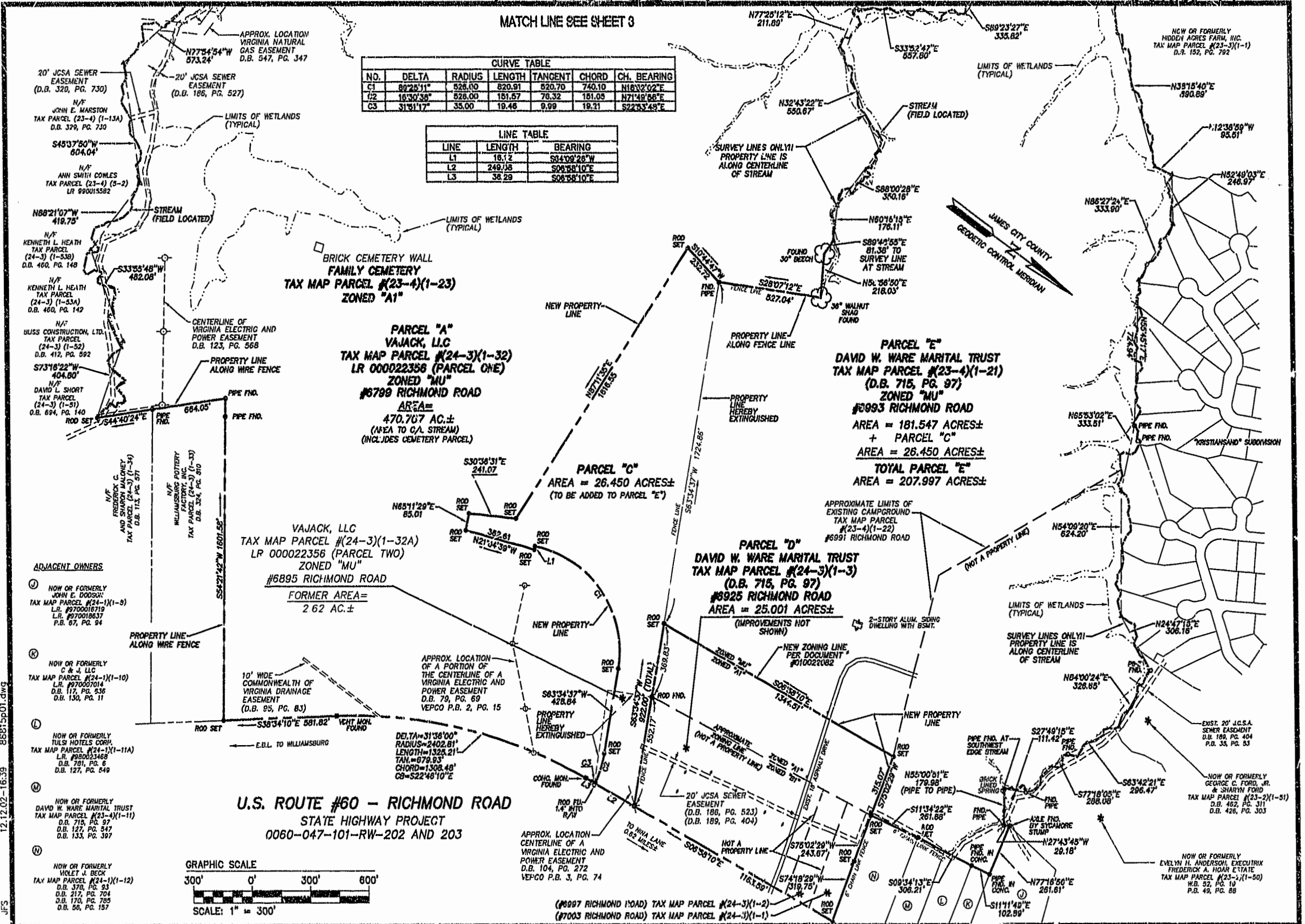
#030000329

89 page 11

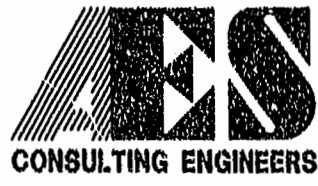
MATCH LINE SEE SHEET 3

CURVE TABLE						
NO.	DELTA	RADIUS	LENGTH	TANGENT	CHORD	CH. BEARING
C1	89°25'11"	526.00	820.91	820.70	740.10	N18°32'02"E
1/2	18°30'38"	526.00	151.57	76.32	151.05	N71°48'58"E
C3	31°31'17"	35.00	19.46	9.09	19.21	S22°33'49"E

LINE TABLE		
LINE	LENGTH	BEARING
L1	18.12	S04°08'28"W
L2	249.18	S08°58'10"E
L3	38.29	S08°58'10"E



88815p01.dwg  
12.12.02-16:39  
JFS



5248 Olde Towne Road, Suite 1  
Williamsburg, Virginia 23188  
(757) 253-0040  
Fax (757) 220-8994

**PLAT OF SUBDIVISION AND BOUNDARY LINE ADJUSTMENT BETWEEN THE PROPERTIES OWNED BY THE MASSIE CORPORATION, VAJACK, L.L.C., AND DAVID W. WARE MARITAL TRUST**

STONEHOUSE DISTRICT JAMES CITY COUNTY VIRGINIA



City of Williamsburg & County of James City Circuit Court: This PLAT was recorded on			
12/12/02	3:42	10 January 2003	
at	AM/PM	PG. 10/12	
DOCUMENT #	23000329		
BY	G.T. WILSON, JR. CLERK		
1	12/12/02	REVISED PER COUNTY COMMENTS	JFS
No.	DATE	REVISION / COMMENT / NOTE	BY

Designed	AES	Drawn	JFS
Scale	1"=300'	Date	10/24/02
Project No.	8881-05		
Drawing No.	2 OF 3		