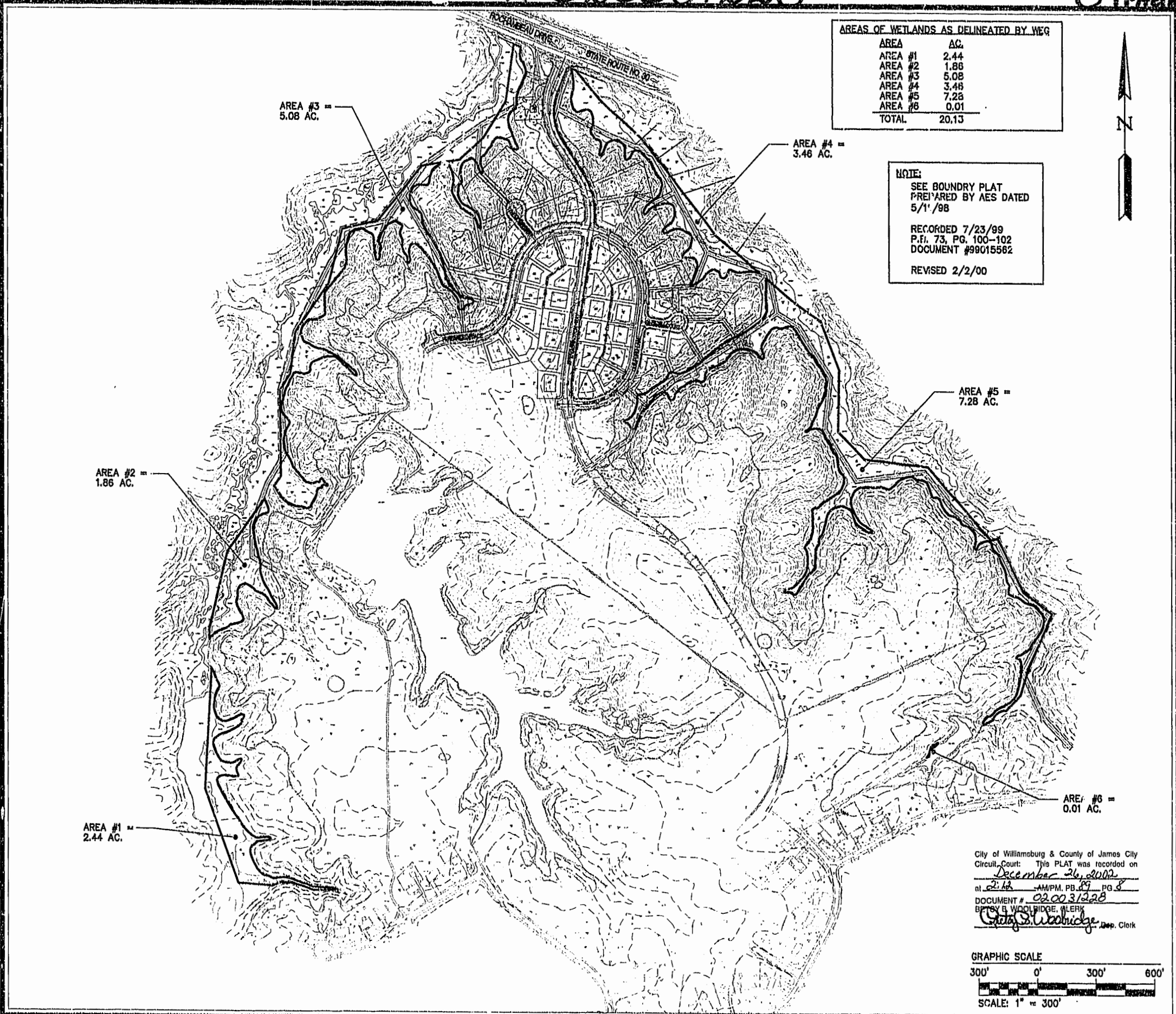
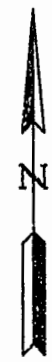


AREAS OF WETLANDS AS DELINEATED BY WE9	
AREA	AC.
AREA #1	2.44
AREA #2	1.86
AREA #3	5.08
AREA #4	3.48
AREA #5	7.28
AREA #6	0.01
TOTAL	20.13

NOTE:
 SEE BOUNDARY PLAT
 PREPARED BY AES DATED
 5/1/98
 RECORDED 7/23/99
 P.F. 73, PG. 100-102
 DOCUMENT #99015562
 REVISED 2/2/00



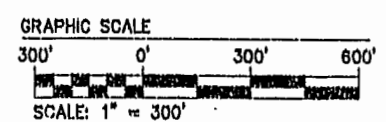
5248 Oide Towne Road, Suite 1
 Williamsburg, Virginia 23188
 (757) 253-0640
 Fax (757) 220-8994



MAP SHOWING LIMITS OF WETLANDS
 FOR
WELLINGTON
 OWNER/DEVELOPER: WELLINGTON, L.L.C.
 JAMES CITY COUNTY STONEHOUSE DISTRICT VIRGINIA

Designed HWP	Drawn HEB
Scale 1" = 300'	Date 12/13/02
Project No. 8223-06	
Drawing No. 1 OF 1	

City of Williamsburg & County of James City
 Circuit Court: This PLAT was recorded on
December 26, 2002
 at 2:16 AM/PM, PB 89 PG 8
 DOCUMENT # 020031228
 BY CLAY B. WOODRIDGE, CLERK
Clay B. Woodridge Dep. Clerk



12.13.02 - 08a32 - wetland.mxd.dwg
 HEB