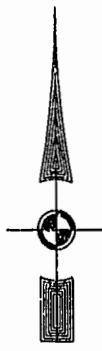


#020029798

88 PAGE 95

EXIST. 20' JAMES CITY COUNTY SERVICE AUTHORITY SAN. SEWER EASEMENT AS SHOWN IN AS-BUILT LOCATION. D.B. 141 - PG. 388

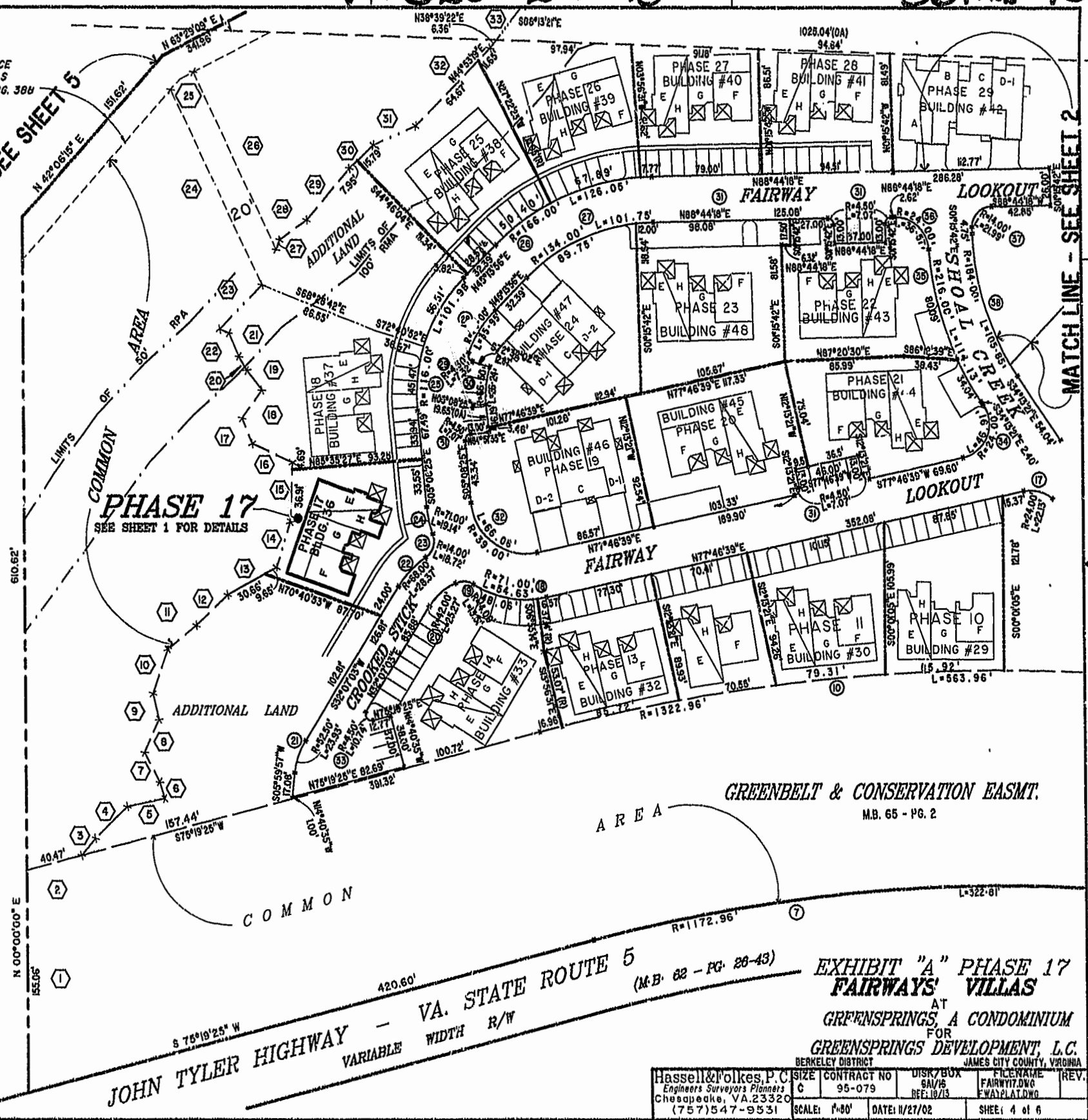


MATCH LINE - SEE SHEET 5

MATCH LINE - SEE SHEET 2

46-1-01-0-0001 "GREENSPRINGS PLANTATION" (DB 322, PG 254)

City of Williamsburg & County of James City Circuit Court: This PLAT was recorded on 12 Dec 2002 at 11:50 AM/PM. PB 98 PG 92-97 DOCUMENT # 020029798 BETSY B. WOOLHIDGE, CLERK



GREENBELT & CONSERVATION EASMT. MB. 65 - PG. 2

VA. STATE ROUTE 5 (M.B. 82 - PG. 88-43) JOHN TYLER HIGHWAY - VARIABLE WIDTH R/W

EXHIBIT "A" PHASE 17 FAIRWAYS' VILLAS AT GREENSPRINGS A CONDOMINIUM FOR GREENSPRINGS DEVELOPMENT, L.C. BERKELEY DISTRICT JAMES CITY COUNTY, VIRGINIA

Hassell & Folkes, P.C. Engineers Surveyors Planners Chesapeake, VA. 23320 (757) 547-9531	CONTRACT NO 95-079	DISK/BOX SAL/16 REF: 10/13	FILENAME FAIRWAY17.DWG FWAY17.PLAT.DWG	REV. 4 of 6
SCALE: 1"=80'	DATE: 11/27/02			