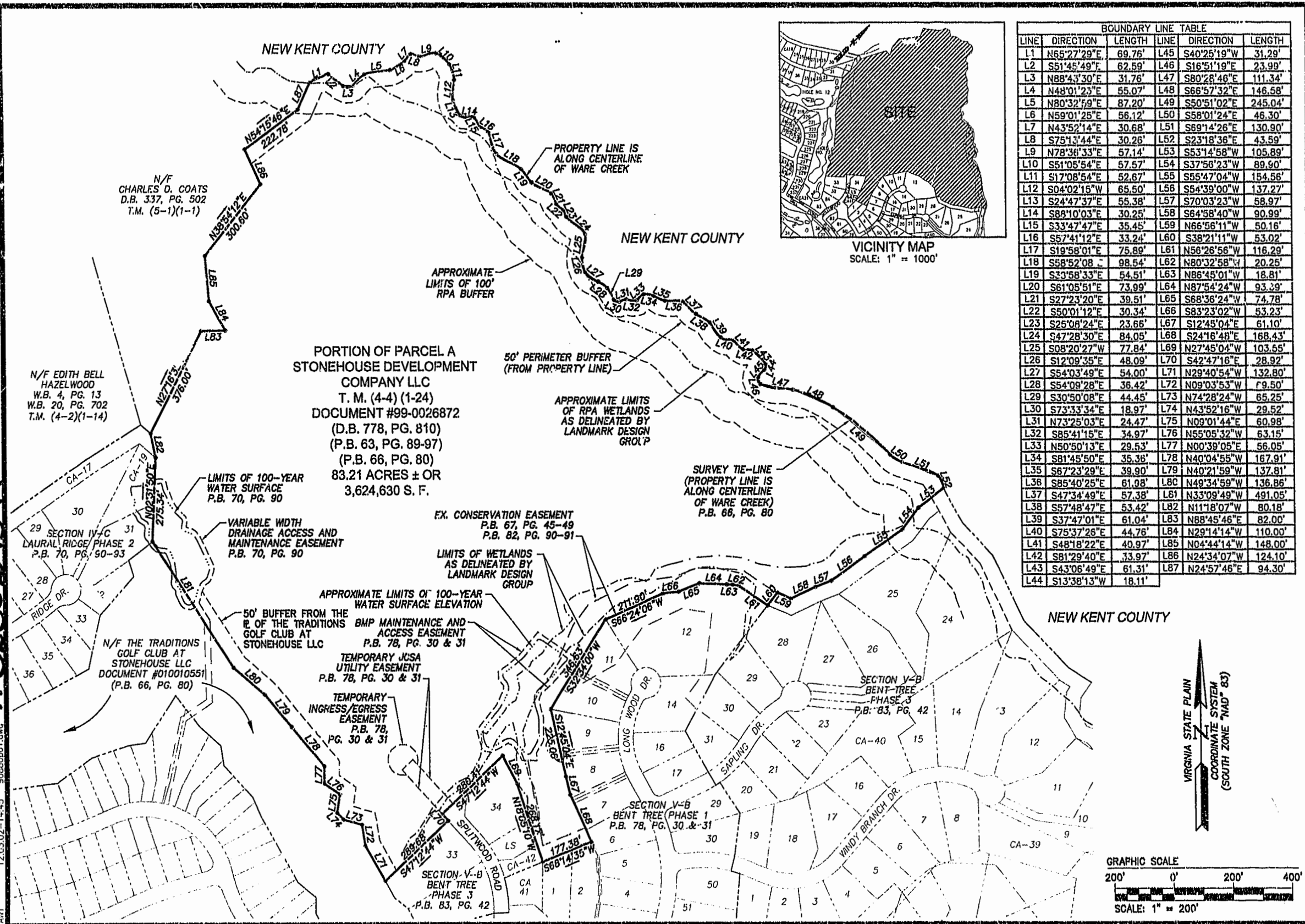


88 PAGE 79

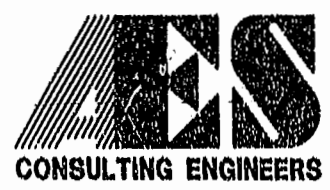
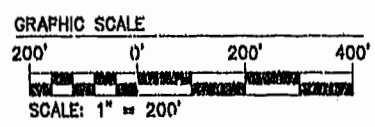
#020029397

12.03.02-14:45 90880p01.dwg



BOUNDARY LINE TABLE

LINE	DIRECTION	LENGTH	LINE	DIRECTION	LENGTH
L1	N65°27'29"E	69.76'	L45	S40°25'19"W	31.29'
L2	S51°45'49"E	62.59'	L46	S16°51'19"E	23.99'
L3	N88°41'30"E	31.76'	L47	S80°28'46"E	111.34'
L4	N48°01'23"E	55.07'	L48	S66°57'32"E	146.58'
L5	N80°32'59"E	87.20'	L49	S50°51'02"E	245.04'
L6	N59°01'25"E	56.12'	L50	S58°01'24"E	46.30'
L7	N43°52'14"E	30.68'	L51	S69°14'26"E	130.90'
L8	S75°13'44"E	30.26'	L52	S23°18'36"E	43.59'
L9	N78°36'33"E	57.14'	L53	S53°14'58"W	105.89'
L10	S51°05'54"E	57.57'	L54	S37°56'23"W	89.90'
L11	S17°08'54"E	52.67'	L55	S55°47'04"W	154.56'
L12	S04°02'15"W	65.50'	L56	S54°39'00"W	137.27'
L13	S24°47'37"E	55.38'	L57	S70°03'23"W	58.97'
L14	S88°10'03"E	30.25'	L58	S64°58'40"W	90.99'
L15	S33°47'47"E	35.45'	L59	N66°56'11"W	50.16'
L16	S57°41'12"E	33.24'	L60	S38°21'11"W	53.02'
L17	S19°58'01"E	75.89'	L61	N56°26'56"W	116.29'
L18	S58°52'08"E	98.54'	L62	N80°32'58"W	20.25'
L19	S33°58'33"E	54.51'	L63	N86°45'01"W	18.81'
L20	S61°05'51"E	73.99'	L64	N87°54'24"W	93.39'
L21	S27°23'20"E	39.51'	L65	S68°36'24"W	74.78'
L22	S50°01'12"E	30.34'	L66	S83°23'02"W	53.23'
L23	S25°08'24"E	23.66'	L67	S12°45'04"E	61.10'
L24	S47°28'30"E	84.05'	L68	S24°16'48"E	168.43'
L25	S08°20'27"W	77.84'	L69	N27°45'04"W	103.55'
L26	S12°09'35"E	48.09'	L70	S42°47'16"E	28.92'
L27	S54°03'49"E	54.00'	L71	N29°40'54"W	132.80'
L28	S54°09'28"E	36.42'	L72	N09°03'53"W	79.50'
L29	S30°50'08"E	44.45'	L73	N74°28'24"W	65.25'
L30	S73°33'34"E	18.97'	L74	N43°52'16"W	29.52'
L31	N73°25'03"E	24.47'	L75	N09°01'44"E	60.98'
L32	S85°41'15"E	34.97'	L76	N55°05'32"W	63.15'
L33	N50°50'13"E	29.53'	L77	N00°39'05"E	56.05'
L34	S81°45'50"E	35.36'	L78	N40°04'55"W	167.91'
L35	S67°23'29"E	39.90'	L79	N40°21'59"W	137.81'
L36	S85°40'25"E	61.08'	L80	N49°34'59"W	136.86'
L37	S47°34'49"E	57.38'	L81	N33°09'49"W	491.05'
L38	S57°48'47"E	53.42'	L82	N11°18'07"W	80.18'
L39	S37°47'01"E	61.04'	L83	N88°45'46"E	82.00'
L40	S75°37'26"E	44.76'	L84	N29°14'14"W	110.00'
L41	S48°18'22"E	40.97'	L85	N04°44'14"W	148.00'
L42	S81°29'40"E	33.97'	L86	N24°34'07"W	124.10'
L43	S43°06'49"E	61.31'	L87	N24°57'46"E	94.30'
L44	S13°38'13"W	18.11'			



5248 Olde Towne Road, Suite 1  
 Williamsburg, Virginia 23188  
 (757) 253-0040  
 Fax (757) 220-8994

PLAT OF SURVEY  
 A PARCEL CONTAINING 83.21 ACRES ±  
 BEING A PORTION OF PARCEL 'A' OWNED BY  
 STONEHOUSE DEVELOPMENT COMPANY LLC

**STONEHOUSE**

STONEHOUSE DISTRICT JAMES CITY COUNTY VIRGINIA



City of Williamsburg & County of James City  
 Circuit Court: This PLAT was recorded on  
 9 Dec. 2002  
 at 10:28 AM P.M. PG. 79  
 DOCUMENT # 020029397  
 BETSY D. WOOLRIDGE, CLERK  
 Betsy D. Woolridge, Clerk

No.	DATE	REVISION / COMMENT / NOTE	BY
1	12/4/02	REVISED TO SHOW 50' BUFFER	VMB

Designed	Drawn
VMB	AWT
Scale	Date
1"=200'	11/22/02
Project No.	
9088	
Drawing No.	
1 OF 1	