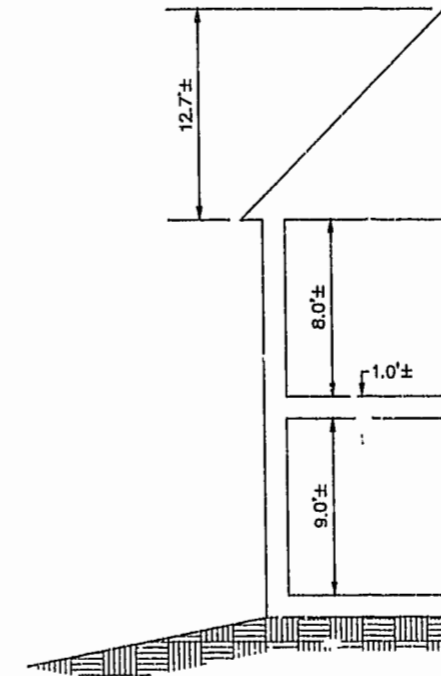
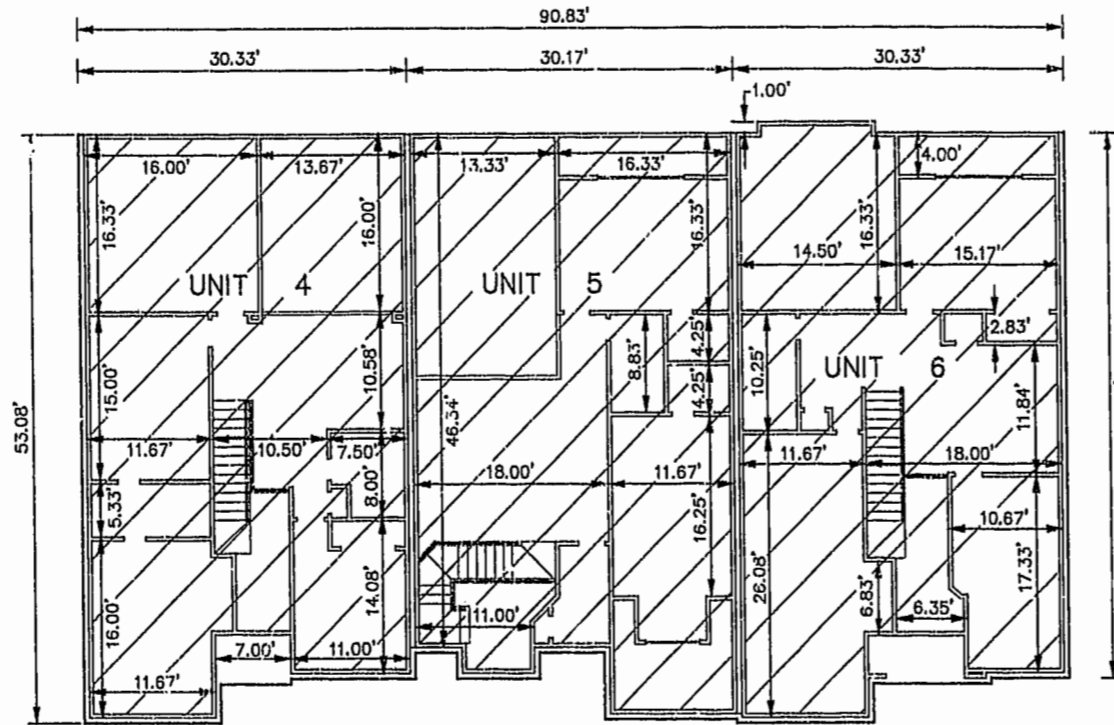


EXHIBIT B-14
 SUPPLEMENTAL CONDOMINIUM PLAN
 OF
 WYNDHAM PLANTATION
 CONDOMINIUM
 WILLIAMSBURG, VIRGINIA
 SCALE: 1"=10' SEPTEMBER 27, 2002
 JOHN E. SIRINE AND ASSOCIATES, LTD.
 SURVEYORS • ENGINEERS • PLANNERS
 VIRGINIA BEACH, VIRGINIA
 (757) 486-4910

NOTES:

1. BUILDING DIMENSIONS SHOWN HEREON ARE INTERIOR DIMENSIONS. THESE DIMENSIONS ARE IN FEET AND WERE TAKEN FROM PLANS SUPPLIED ENTITLED "WYNDHAM PLANTATION AT WILLIAMSBURG, FLOOR PLANS" BY PROGRESSIVE DESIGNS DATED 11/19/98.
2. INTERIOR UNIT CONFIGURATIONS AND PARTITIONS AS DEPICTED HEREON ARE FOR THE PURPOSE OF ILLUSTRATION ONLY AND MAY NOT REPRESENT THE INTERIOR OF A UNIT AS ACTUALLY CONSTRUCTED.

SECOND FLOOR - BUILDING 19
 SCALE: 1"=10'



SCALE: 1/4"=5'

UNIT AREA

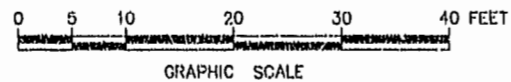
PHASE	UNIT No.	UNIT ADDRESS	UNIT AREA
16	4	477 ZELKOVA ROAD	1,853 S.F.
16	5	481 ZELKOVA ROAD	1,957 S.F.
16	6	485 ZELKOVA ROAD	1,799 S.F.

THE UNDERSIGNED CERTIFIES THAT THESE PLANS ARE ACCURATE AND COMPLY WITH THE PROVISIONS OF CODE OF VIRGINIA, SECTION 55-79.58.B AND THAT ALL UNITS OR PORTIONS THEREOF DEPICTED HEREON AND ALL COMMON ELEMENTS HAVE BEEN SUBSTANTIALLY COMPLETED.

SIGNED: JEFFREY D. WILLIAMS
 JEFFREY D. WILLIAMS, L.S.



City of Williamsburg & County of James City
 Circuit Court: This PLAT was recorded on
NOV. 25, 2002
 at 1:30 AM/PM, PB 88, Page 568
 DOCUMENT # 022138
 BETSY B. WOOLRIDGE, CLERK
C. Whelan-Fell Dep. Clork.



GRAPHIC SCALE