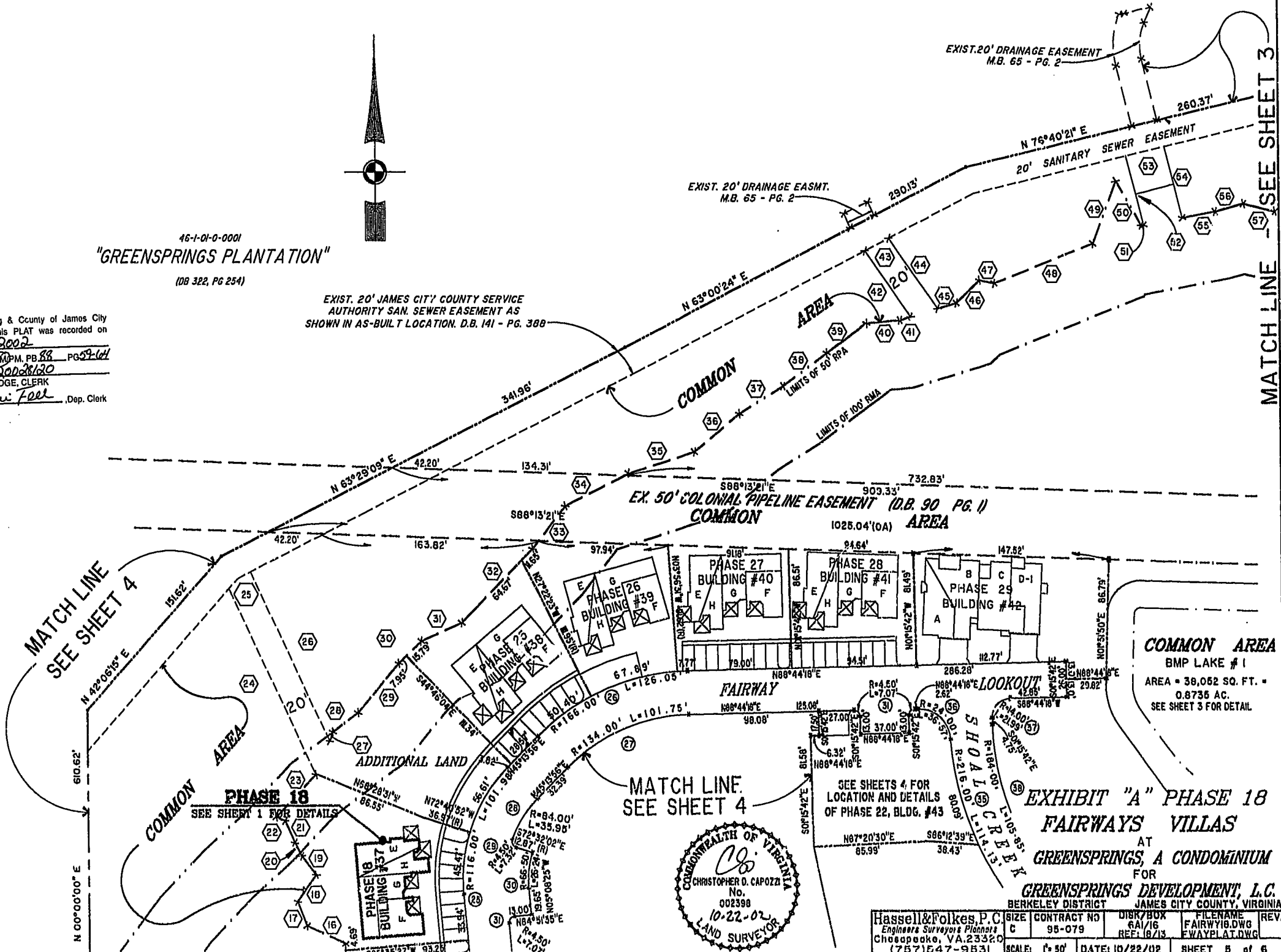


46-1-01-0-0001
"GREENSPRINGS PLANTATION"
(DB 322, PG 254)

EXIST. 20' JAMES CITY COUNTY SERVICE
AUTHORITY SAN. SEWER EASEMENT AS
SHOWN IN AS-BUILT LOCATION, D.B. 141 - PG. 388

City of Williamsburg & County of James City
Circuit Court: This PLAT was recorded on
Nov. 25, 2002
at 10:32 AM P.M. PB. 88 PG. 59-64
DOCUMENT # 020028120
BETSY B. WOOLRIDGE, CLERK
C. Newell Dep. Clerk



MATCH LINE
SEE SHEET 4

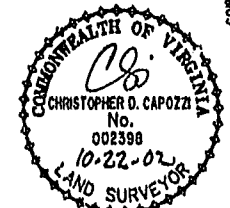
MATCH LINE
SEE SHEET 3

COMMON AREA
BMP LAKE #1
AREA = 38,062 SQ. FT. =
0.8735 AC.
SEE SHEET 3 FOR DETAIL

MATCH LINE
SEE SHEET 4

SEE SHEETS 4 FOR
LOCATION AND DETAILS
OF PHASE 22, BLDG. #43

EXHIBIT "A" PHASE 18
FAIRWAYS VILLAS
AT
GREENSPRINGS, A CONDOMINIUM
FOR
GREENSPRINGS DEVELOPMENT, L.C.
BERKELEY DISTRICT JAMES CITY COUNTY, VIRGINIA



Hassell & Polkes, P.C. Engineers Surveyors Planners Chesapeake, VA 23320 (757) 547-9531	SCALE: 1" = 50'	DATE: 10/22/02	SHEET 8 of 6
--	-----------------	----------------	--------------