

#020028120

88 PAGE 61

City of Williamsburg & County of James City  
Circuit Court: This PLAT was recorded on  
Nov. 25, 2002  
at 10:32 AM PM, PG 88 PG 89-104  
DOCUMENT # 020028120  
BETSY B. WOOLRIDGE, CLERK  
C. New Fall, Dep. Clerk

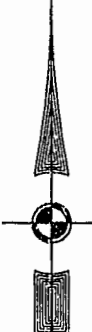
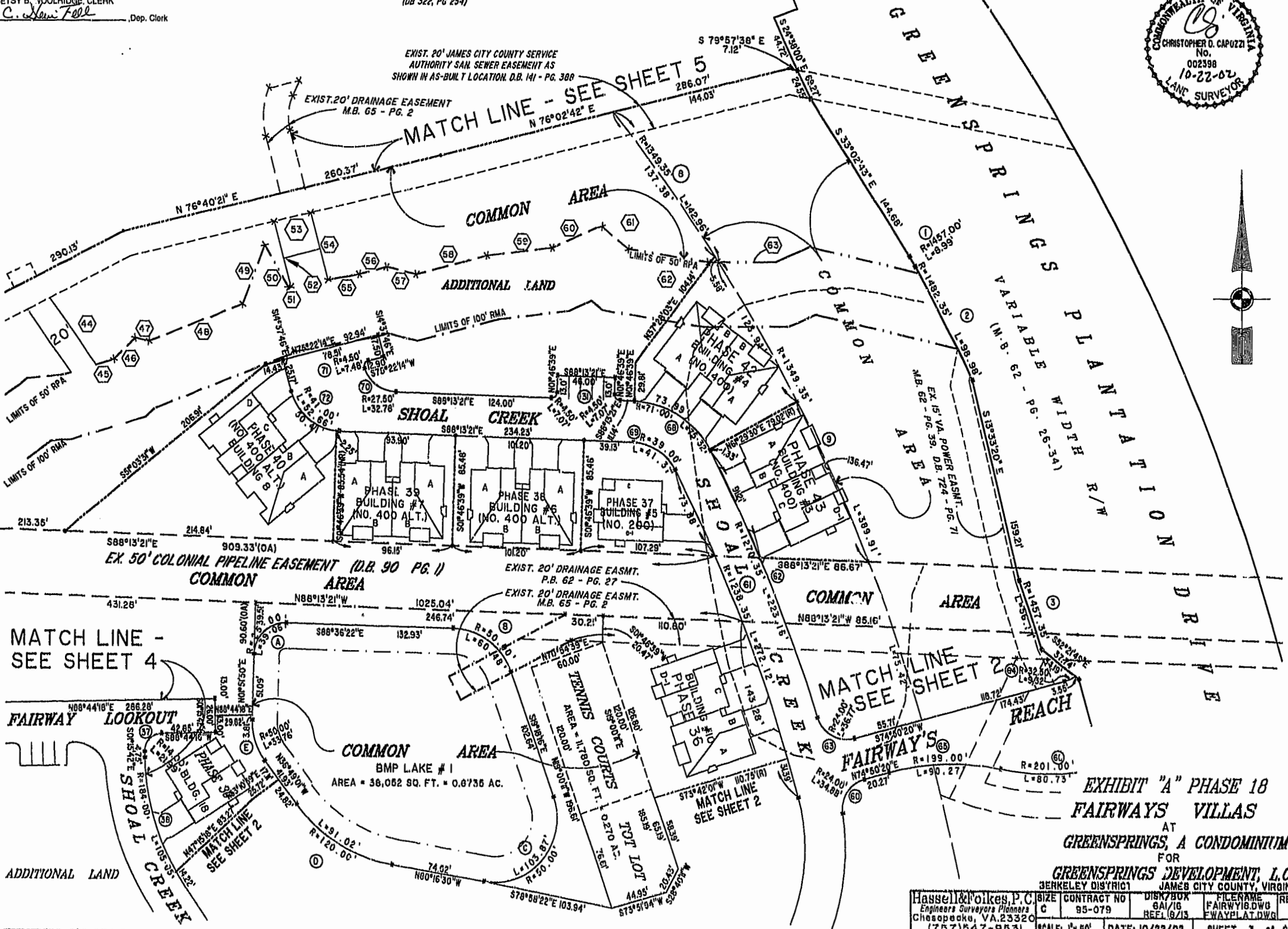
"GREENSPRINGS PLANTATION"  
(DB 322, PG 254)

46-1-01-0-0001

EXIST. 20' JAMES CITY COUNTY SERVICE  
AUTHORITY SAN. SEWER EASEMENT AS  
SHOWN IN AS-BUILT LOCATION. D.B. 141 - PG. 388

EXIST. 20' DRAINAGE EASEMENT  
M.B. 65 - PG. 2

MATCH LINE - SEE SHEET 5  
N 76°02'42" E



MATCH LINE -  
SEE SHEET 4

MATCH LINE  
SEE SHEET 2

EXHIBIT "A" PHASE 18  
FAIRWAYS VILLAS  
AT  
GREENSPRINGS, A CONDOMINIUM  
FOR

GREENSPRINGS DEVELOPMENT, L.C.  
3ENKLEY DISTRICT 1 JAMES CITY COUNTY, VIRGINIA

Hassell & Folkes, P.C. Engineers Surveyors Planners Chesapeake, VA 23320 (757) 547-9531	SIZE C	CONTRACT NO 95-079	DISK/BOX 8A/16 REF1/9/13	FILENAME FAIRWAYS.DWG FWAYPLAT.DWG	REV. REV.
SCALE: 1" = 80'	DATE: 10/22/02	SHEET 3 of 6			