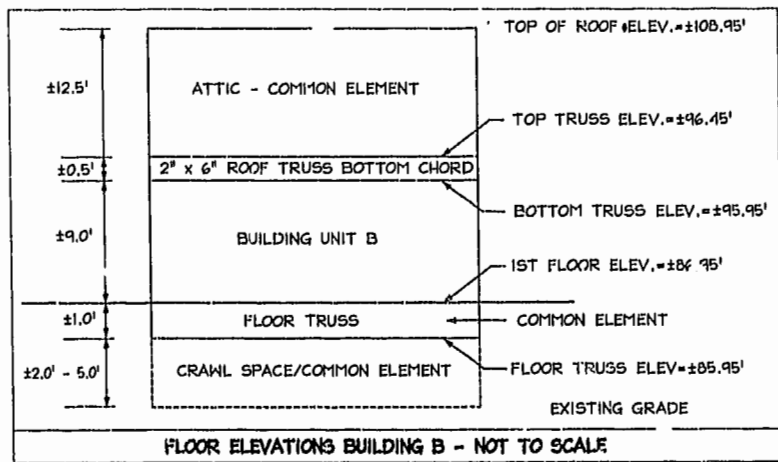
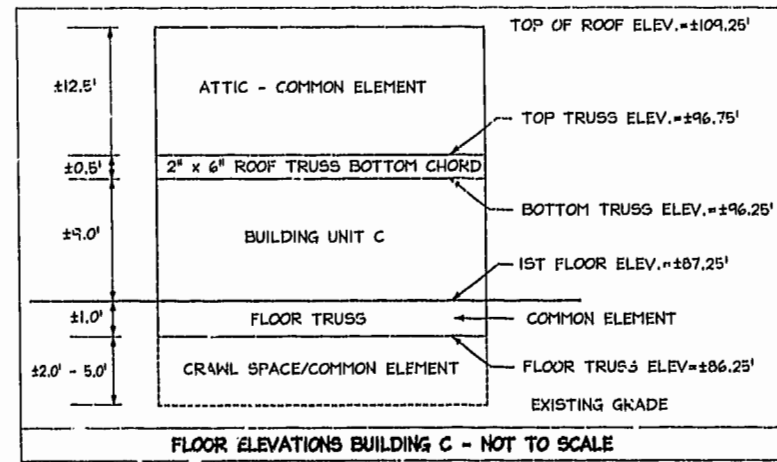


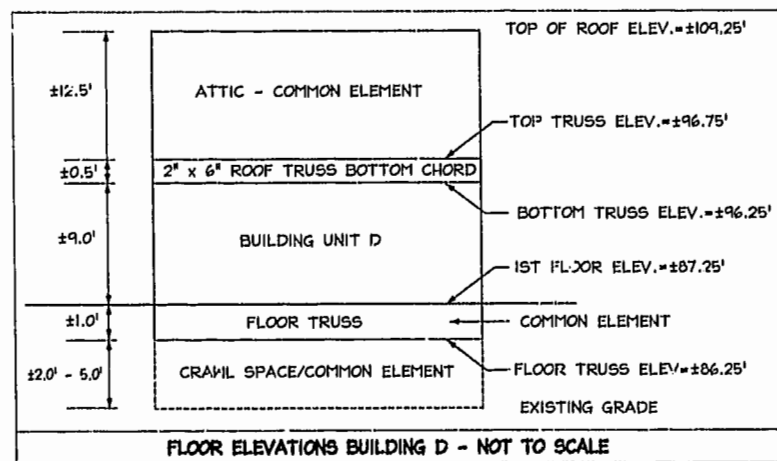
FLOOR ELEVATIONS BUILDING A - NOT TO SCALE



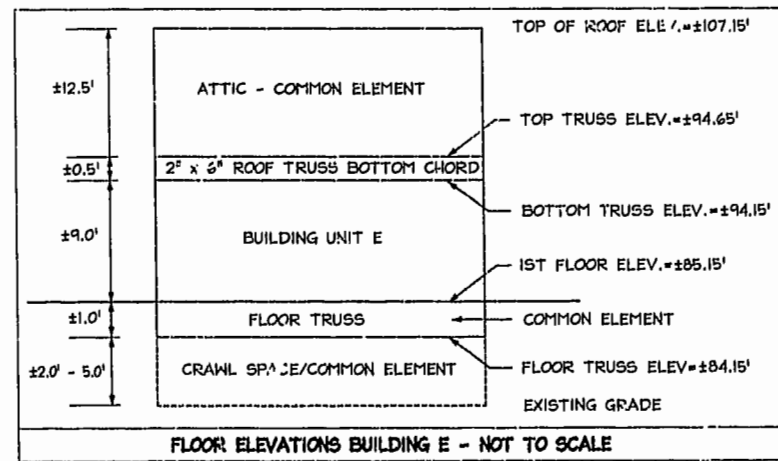
FLOOR ELEVATIONS BUILDING B - NOT TO SCALE



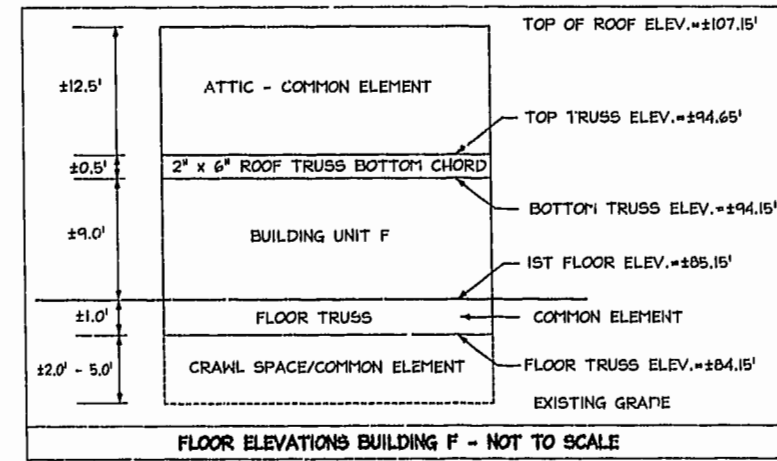
FLOOR ELEVATIONS BUILDING C - NOT TO SCALE



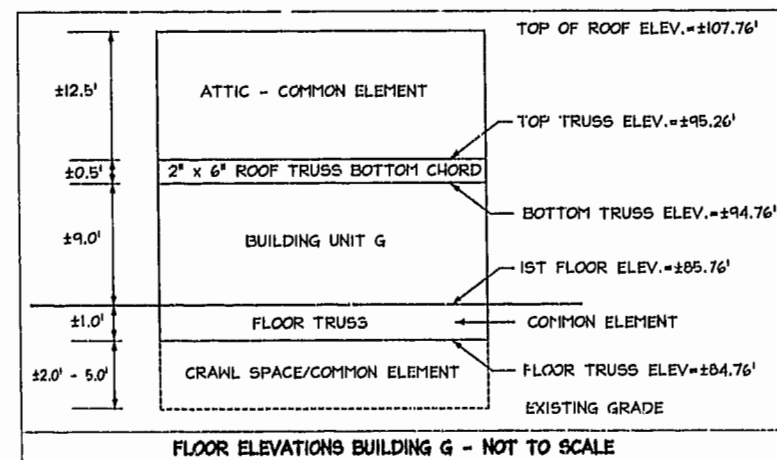
FLOOR ELEVATIONS BUILDING D - NOT TO SCALE



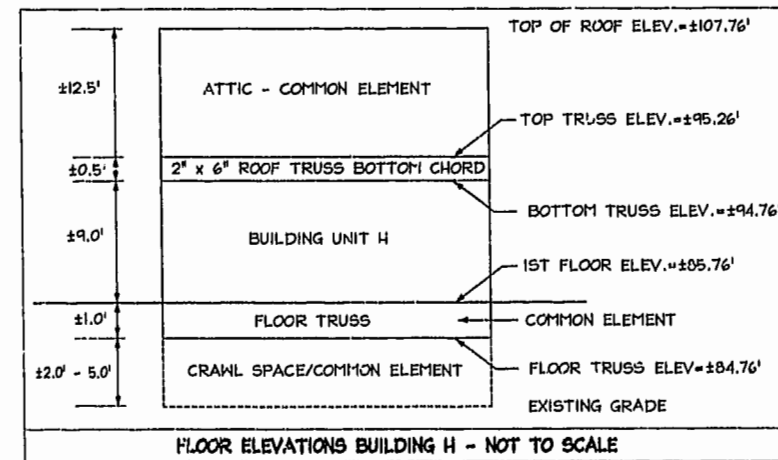
FLOOR ELEVATIONS BUILDING E - NOT TO SCALE



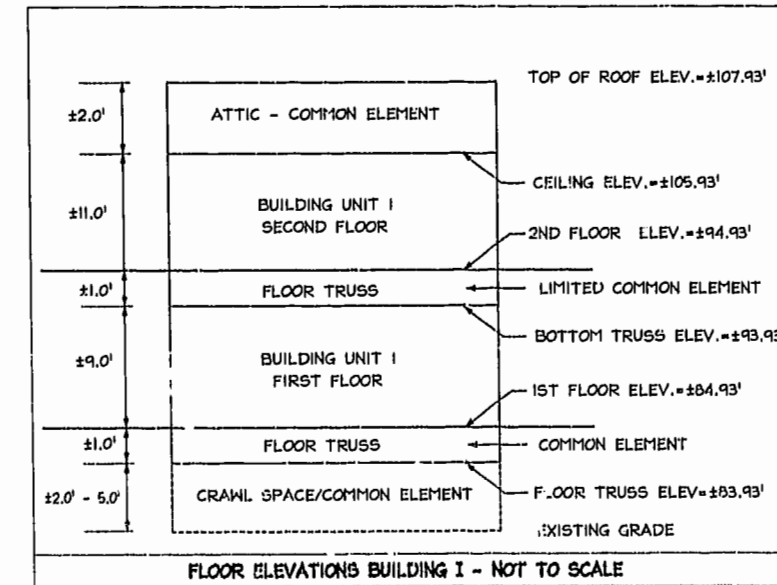
FLOOR ELEVATIONS BUILDING F - NOT TO SCALE



FLOOR ELEVATIONS BUILDING G - NOT TO SCALE



FLOOR ELEVATIONS BUILDING H - NOT TO SCALE



FLOOR ELEVATIONS BUILDING I - NOT TO SCALE

City of Williamsburg & County of James City  
 Circuit Court: This PLAT was recorded on  
 15 Nov. 2002  
 at 9:29 AM/PM/PB 88 PG 45/44  
 DOCUMENT # 020027161  
 BETSY B. WOOLRIDGE, CLERK  
*Betsy Woolridge*, Esq., Clerk

SHEET 2 OF 2

LandTech Resources, Inc.  
 Surveying • Mapping • GPS  
 5810-E Mooretown Road, Williamsburg, Virginia 23188  
 Telephone: 757-565-1677 Fax: 757-565-0782  
 Web: landtechresources.com

McLaws CENTRE OFFICE CONDOMINIUMS

Roberts District, James City County, Virginia

PROJECT #02-383 DATE: 10-21-2002

SURVEYOR'S CERTIFICATE

I CERTIFY THAT THIS PLAT IS ACCURATE AND COMPLIES WITH THE PROVISIONS OF SECTION 55-79.58(A) AND (B) OF THE CODE OF VIRGINIA 1950 AS AMENDED AND THAT ALL UNITS DEPICTED HEREON HAVE BEEN SUBSTANTIALLY COMPLETED.

*Matthew H. Curran*  
 STATE CERTIFIED LAND SURVEYOR

10-21-2002  
 DATE



#020027161

88 PAGE 46