

WE HEREBY CERTIFY THAT WE HAVE SURVEYED ALL OF THE UNITS OR PORTIONS THEREOF AND DO FURTHER CERTIFY THAT THESE PLANS ARE ACCURATE AND THEY COMPLY WITH SECTION 55-79.55(B) OF THE CODE OF VIRGINIA, AS AMENDED. ALL STRUCTURED ARE SUBSTANTIALLY COMPLETE.

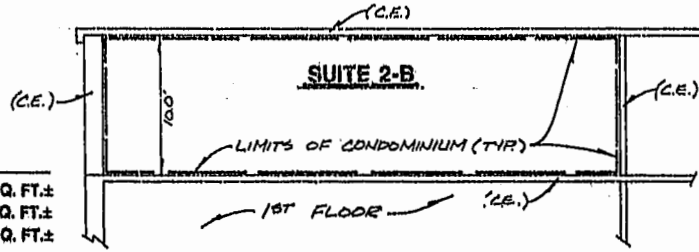
AES CONSULTING ENGINEERS

BY: *G. T. Wilson, Jr.*  
G. T. WILSON, JR., C.L.S.

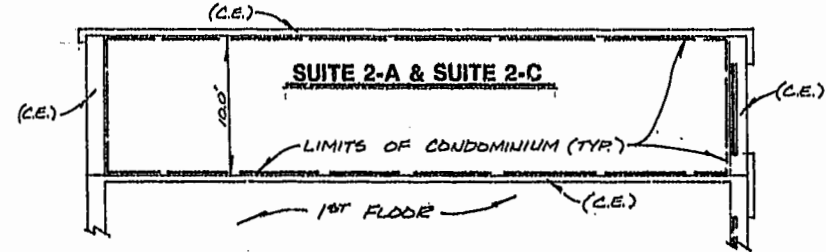
(C.E.) = COMMON ELEMENT

AREA TABULATION - 2ND LEVEL

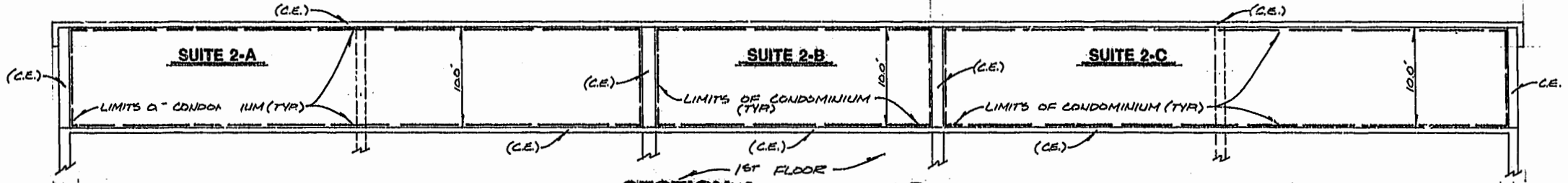
SUITE 2-A	2670.33 SQ. FT.±
SUITE 2-B	1037.51 SQ. FT.±
SUITE 2-C	2573.96 SQ. FT.±
COMMON ELEMENTS (C.E.) - WALLS, LOBBY, STAIRS, JANITORS CLOSET, ELEVATOR, CHIMNEY	1223.75 SQ. FT.±
<b>TOTAL AREA 2ND LEVEL</b>	<b>7805.55 SQ. FT.±</b>



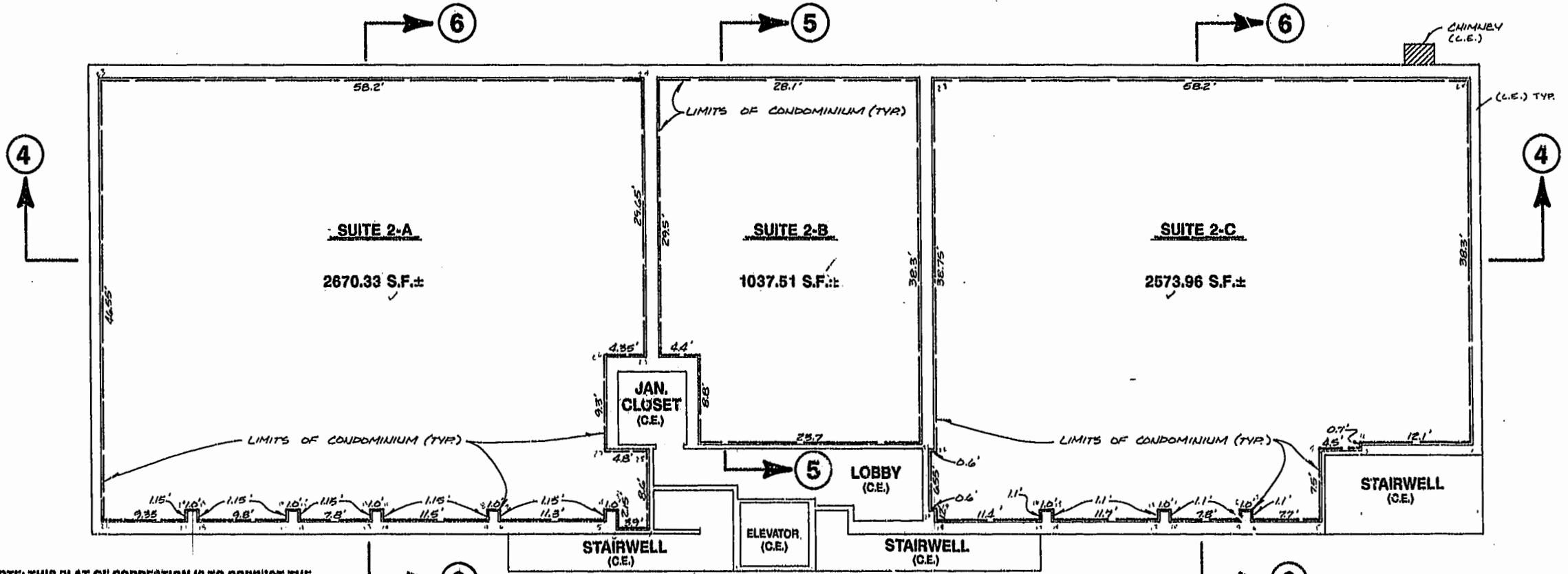
**SECTION 5**  
SCALE: 1" = 8'



**SECTION 6**  
SCALE: 1" = 8'



**SECTION 4**  
SCALE: 1" = 8'



**PLAN VIEW-2ND FLOOR**  
SCALE: 1" = 8'

NOTE: THIS PLAT OF CORRECTION IS TO CORRECT THE AREA OF SUITE 1-B. THIS IS THE ONLY CORRECTION MADE TO THE PLAT AS RECORDED IN PLAT BOOK 58, PAGE 18-22.

PLAT OF CORRECTION

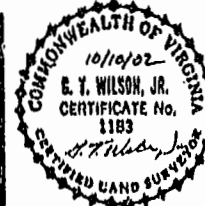
EXHIBIT B

**WILLIAMSBURG PROFESSIONAL  
CENTRE CONDOMINIUMS**

OWNER/ DEVELOPER: ALVIN P. ANDERSON, TRUSTEE

CITY OF WILLIAMSBURG

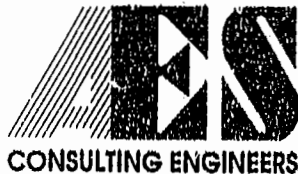
VIRGINIA



No.	DATE	REVISION / COMMENT / NOTE	BY

City of Williamsburg & County of James City  
Circuit Court: This PLAT was recorded on  
8/20/02 at 10:23 AM PM-PB-88 PG 36-39  
DOCUMENT # 022004  
BETSY B. WOODRIDGE, CLERK  
*Betsy B. Woodridge* Sup. Clerk

Designed AES	Drawn RWE
Scale NOTED	Date 10/10/02
Project No. 7240	
Drawing No. 3 OF 4	



5248 Olde Towne Road, Suite 1  
Williamsburg, Virginia 23188  
(804) 253-0040  
Fax (804) 220-8994

#022004

88 PAGE 38