

WE HEREBY CERTIFY THAT WE HAVE SURVEYED ALL OF THE UNITS OR PORTIONS THEREOF AND DO FURTHER CERTIFY THAT THESE PLANS ARE ACCURATE AND THEY COMPLY WITH SECTION 55-79.50(B) OF THE CODE OF VIRGINIA, AS AMENDED. ALL STRUCTURES ARE SUBSTANTIALLY COMPLETE.

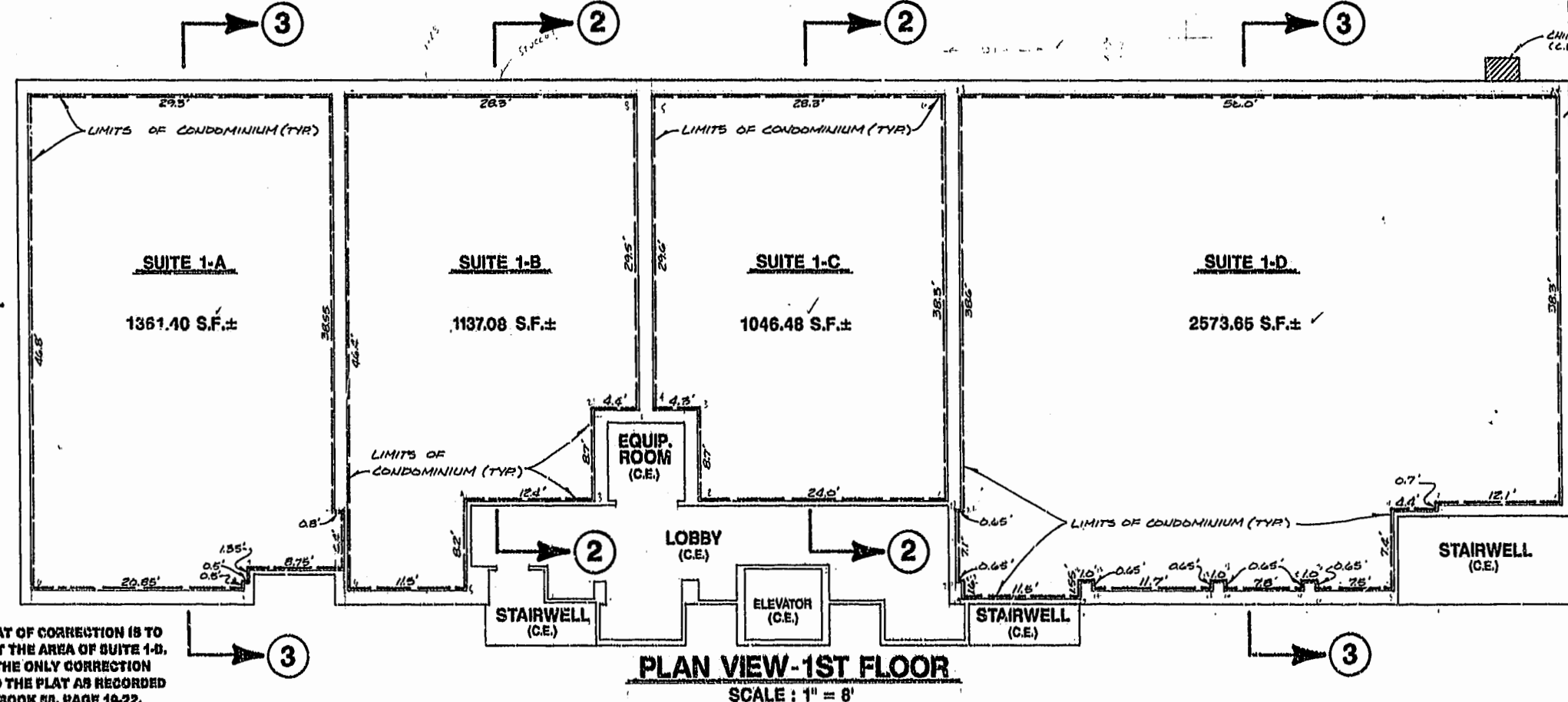
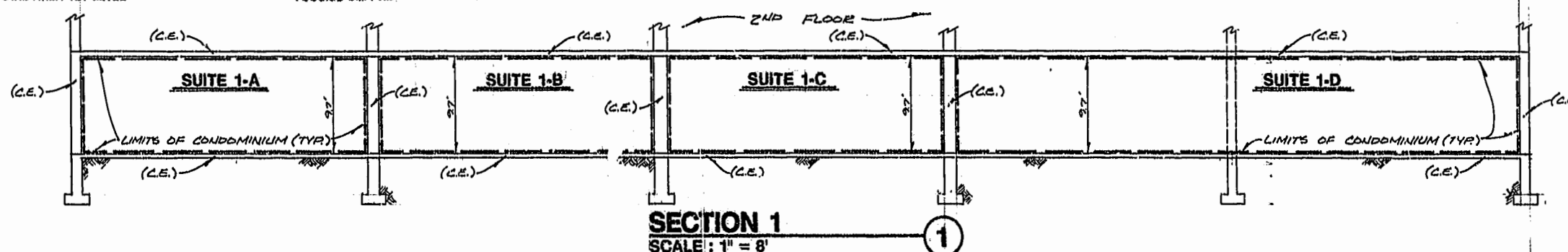
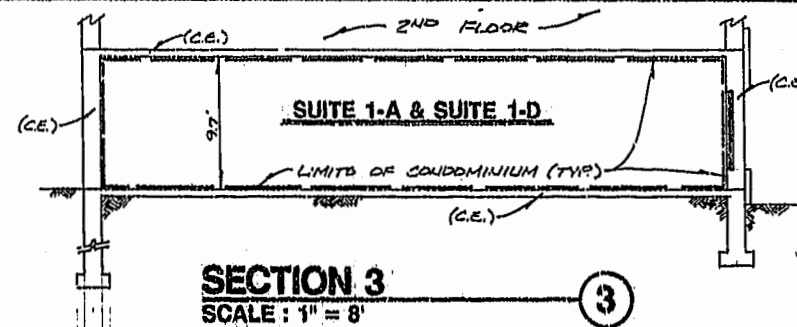
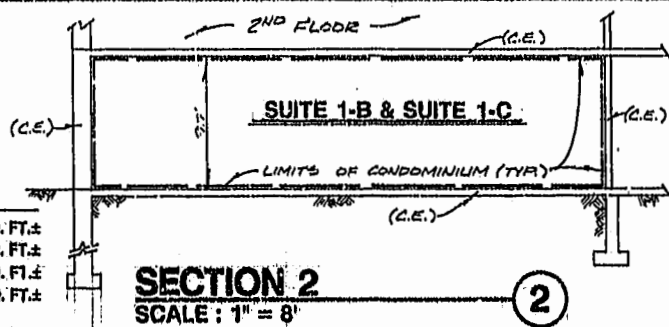
AES CONSULTING ENGINEERS

BY: G. T. Wilson, Jr.  
G. T. WILSON, JR., C.L.U.

(C.E.) = COMMON ELEMENT

AREA TABULATION - 1ST LEVEL

SUITE 1-A	1361.40 SQ. FT.±
SUITE 1-B	1137.08 SQ. FT.±
SUITE 1-C	1046.48 SQ. FT.±
SUITE 1-D	2573.65 SQ. FT.±
COMMON ELEMENTS (C.E.) - WALLS, LOBBY, STAIRS, EQUIPMENT ROOM, ELEVATOR, CHIMNEY	1386.94 SQ. FT.±
<b>TOTAL AREA 1ST LEVEL</b>	<b>7506.55 SQ. FT.±</b>

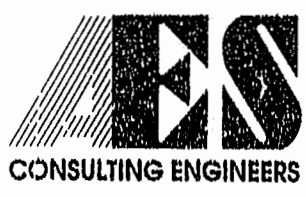


NOTE: THIS PLAT OF CORRECTION IS TO CORRECT THE AREA OF SUITE 1-D. THIS IS THE ONLY CORRECTION MADE TO THE PLAT AS RECORDED IN PLAT BOOK 88, PAGE 18-22.

#022004

88 PAGE

37



5248 Olde Towne Road, Suite 1  
Williamsburg, Virginia 23188  
(804) 253-0040  
Fax (804) 220-8994

PLAT OF CORRECTION  
EXHIBIT B  
**WILLIAMSBURG PROFESSIONAL CENTRE CONDOMINIUMS**  
OWNER/ DEVELOPER: ALVIN P. ANDERSON, TRUSTEE  
CITY OF WILLIAMSBURG VIRGINIA



No.	DATE	REVISION / COMMENT / NOTE	BY

City of Williamsburg & County of James City  
Circuit Court: This PLAT was recorded on 8 Nov. 2002  
at 10:23 AM/PM, PG 28 PG 36-37  
DOCUMENT # 022004  
BETSY B. WOLFRIDGE, Clerk

Designed AES	Drawn RWE
Scale NOTED	Date 10/10/02
Project No. 7240	
Drawing No. 2 OF 4	