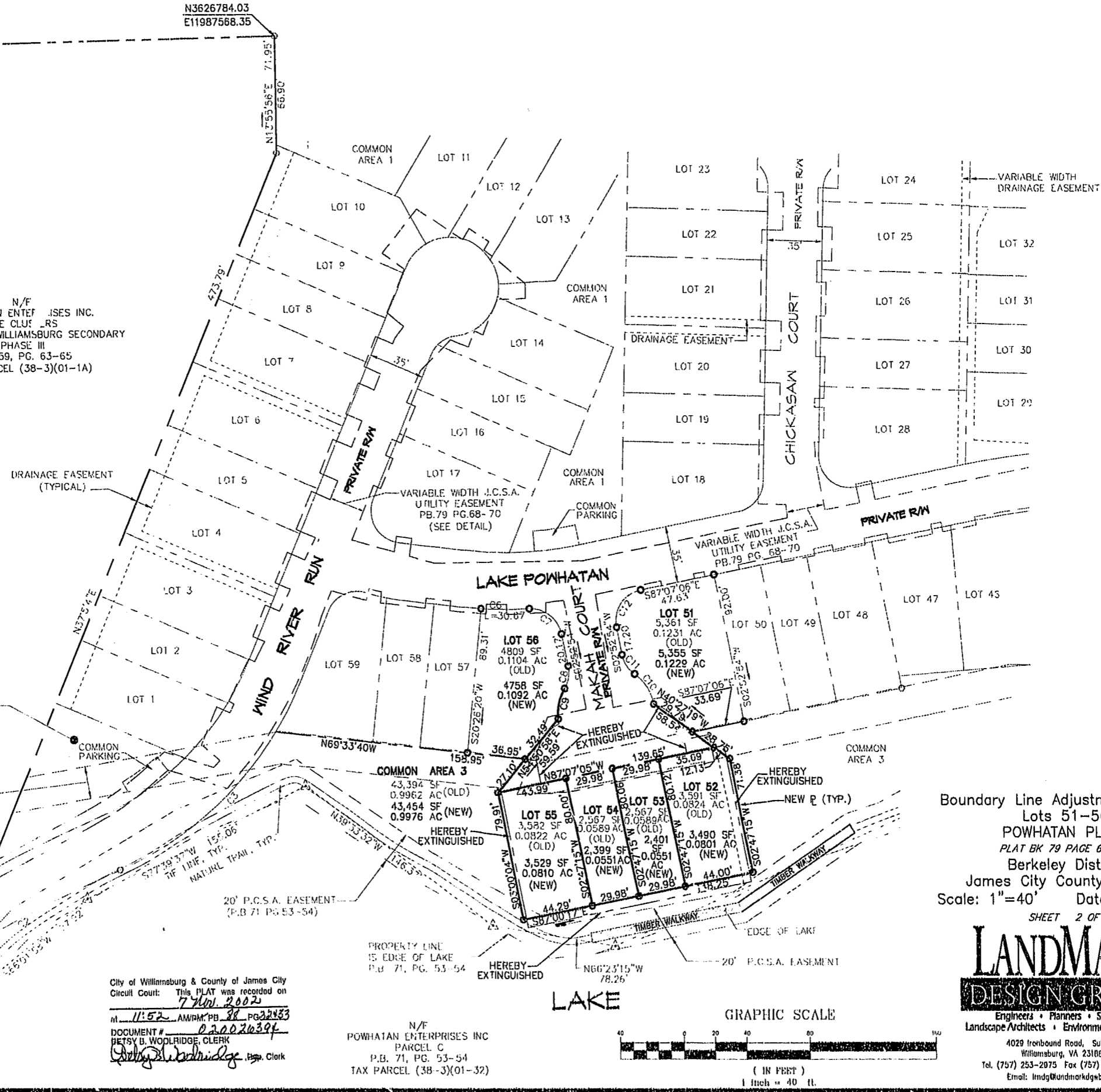


N/F POWHATAN ENTERPRISES INC. THE CLUES POWHATAN OF WILLIAMSBURG SECONDARY PHASE III P.B. 59, PG. 63-65 TAX PARCEL (38-3)(01-1A)



20' J.C.S.A. SANITARY SEWER EASEMENT P.B. 71, PG. 53-54

COMMON AREA 2 5897 SF 0.1354 AC

COMMON AREA 3 43,394 SF 0.9962 AC (OLD) 43,454 SF (NEW) 0.9976 AC (NEW)

20' P.C.S.A. EASEMENT (P.B. 71 PG. 53-54)

PROPERTY LINE IS EDGE OF LAKE P.B. 71, PG. 53-54

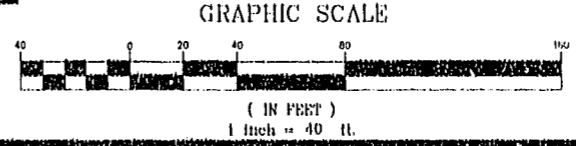
City of Williamsburg & County of James City Circuit Court: This PLAT was recorded on 7 Nov. 2002 at 11:52 AM P.B. 38 PG. 22-33 DOCUMENT # 020026394 BETSY B. WOOLRIDGE, CLERK

N/F POWHATAN ENTERPRISES INC PARCEL C P.B. 71, PG. 53-54 TAX PARCEL (38-3)(01-32)

Boundary Line Adjustment Plat of Lots 51-56 POWHATAN PLACE PLAT BK 79 PAGE 68-70 Berkeley District James City County, Virginia Scale: 1"=40' Date: 2/13/02 SHEET 2 OF 2



Engineers • Planners • Surveyors Landscape Architects • Environmental Consultants 4029 Ironbound Road, Suite 100 Williamsburg, VA 23108 Tel. (757) 253-2075 Fax (757) 220-0049 Email: lmdg@landmarkdgb.com



DRAWN BY: LFV CHKD. BY: SAR

PROJ. NO.: 1980232-000.47 DWG. NO.: 12704W