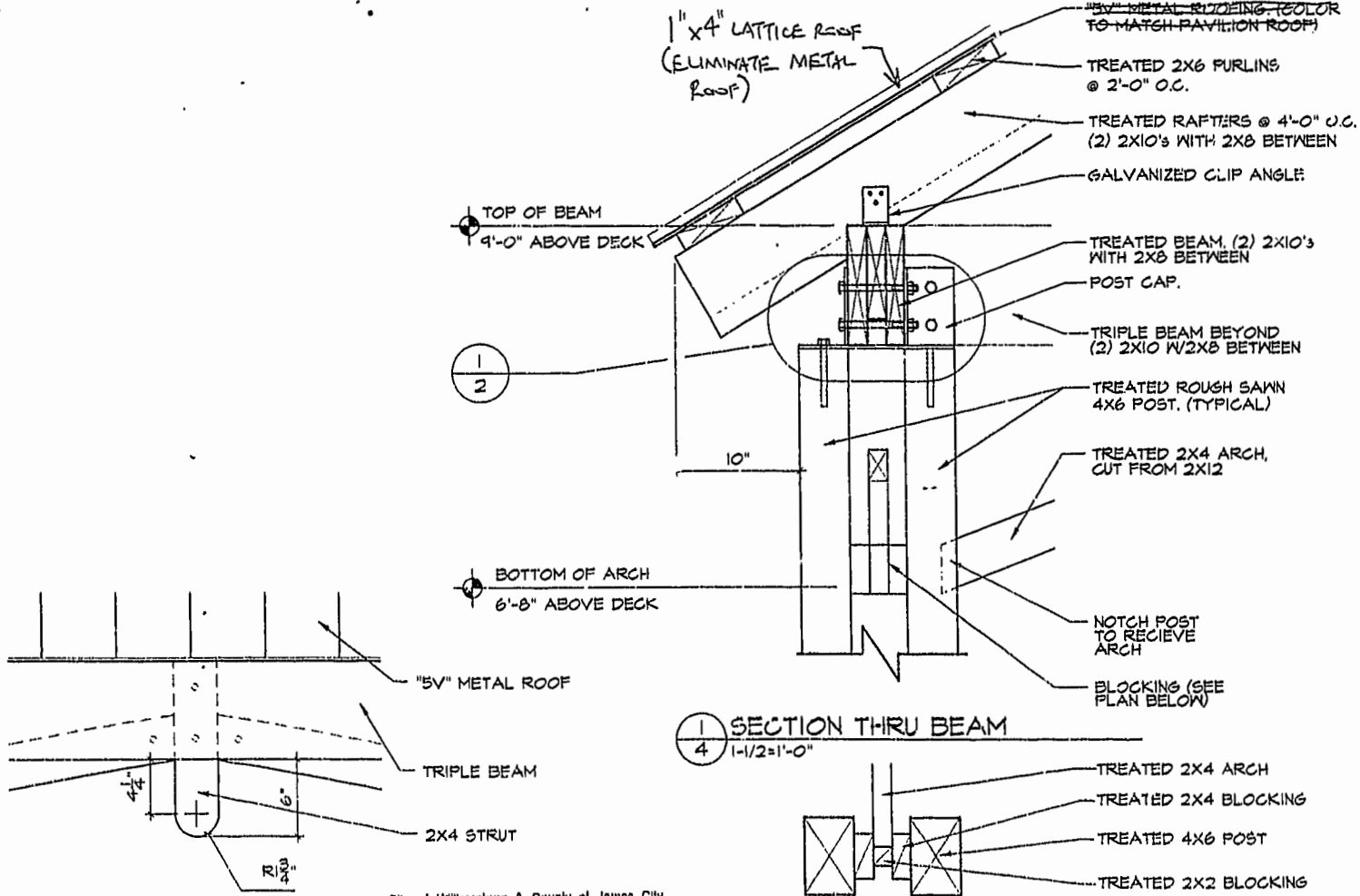


88 PAGE 29

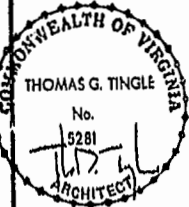
#020025833



3 STRUT ELEVATION  
4 1-1/2=1'-0"

2 POST PLAN AND BLOCKING  
4 1-1/2=1'-0"

City of Williamsburg & County of James City  
 Circuit Court: This PLAT was recorded on  
 4 JUL 2002  
 at 2:49 AM AM. PB 28 PG 26-29  
 DOCUMENT # 020025833  
 BETSY B. WOOLHIDGE, CLERK  
 Betsy Woolhidge Dep. Clerk



Date 10-18-01  
 Drawn PLJH  
 Checked TGT  
 Project 201088

4  
 of FOUR Sheets

Guemsey  
 Tingle  
 Architects  
 WILLIAMSBURG, VIRGINIA 23187-2902

Mill Pond Park Gazebo  
 Stonerhouse  
 James City County, Virginia