

City of Williamsburg & County of James City  
 Circuit Court: This PLAT was recorded on  
 22 Oct 2002

# 021896 88 PAGE 17

at 2:47 PM, PB 38 PG 17  
 DOCUMENT # 221896  
 BETSY D. WOOLRIDGE, CLERK  
 Dep. Clerk

VA STATE GRID NORTH  
 SOUTH ZONE 1983

TAX PARCEL 461-((3))-1  
 THE COLLEGE OF WILLIAM & MARY  
 INSTRUMENT #980409  
 PB 69 PG 15

TAX PARCEL OF WILLIAM & MARY  
 THE COLLEGE OF WILLIAM & MARY  
 DB 24 PG 163  
 LVE DB 22 PG 188  
 REF PB 3 PG 32

COURSE	BEARING	DISTANCE
L10	N 19°25'21"E	52.53'
L11	N 19°25'21"E	52.47'
L12	S 19°25'21"W	52.47'
L13	S 19°25'21"W	52.53'

TAX PARCEL 461-((3))-2  
 THE CITY OF WILLIAMSBURG  
 DB 82 PG 774  
 PB 69 PG 15

TAX PARCEL 491-A-7  
 LAWRENCE TYNES, JR.  
 INSTRUMENT #970001211

TAX PARCEL 491-A-13 (PART)  
 HEIRS OF PARTHENA BAILEY WILSON  
 WB 21 PG 1366

AREA TABULATION  
 TOTAL AREA 226,796 SQ. FT OR 5.20652 ACRES  
 RESIDUE AREA (PART LOT 49) 18,716 SQ FT  
 NET AREA RETAINED BY CITY 208,080 SQ FT OR 4.77686 ACRES

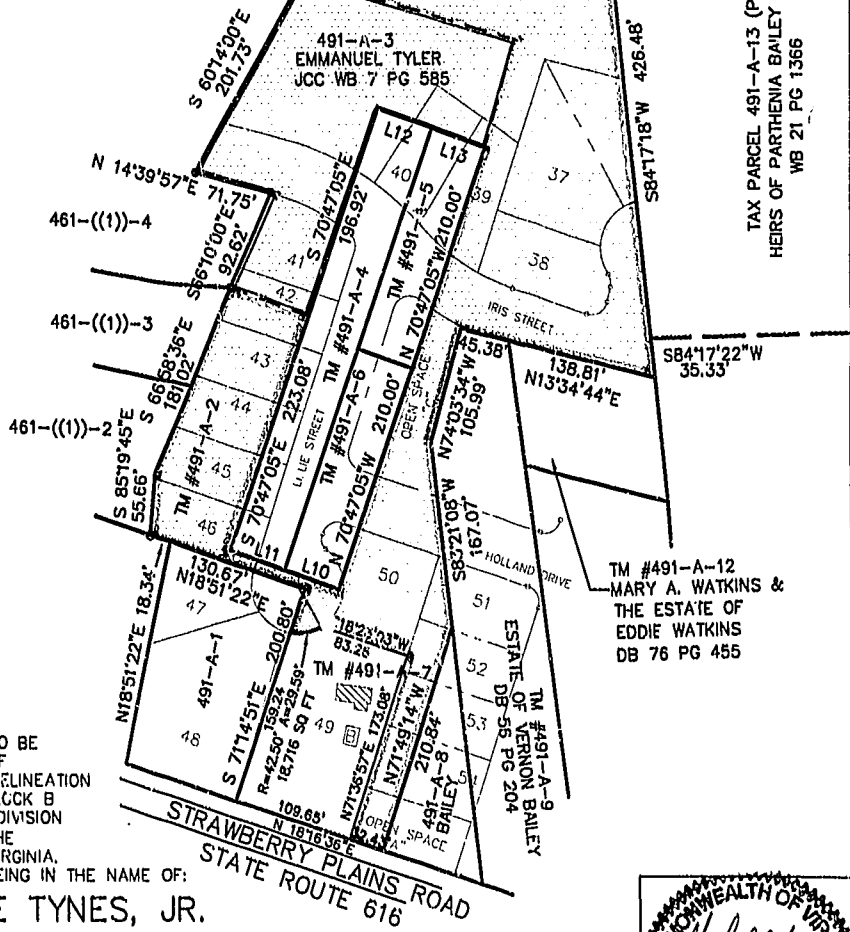


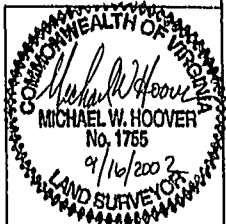
EXHIBIT SHOWING  
 TWO PARCELS OF LAND TO BE  
 ACQUIRED BY THE CITY OF  
 WILLIAMSBURG AND THE DELINEATION  
 OF PROPOSED LOT 49, BLOCK B  
 STRAWBERRY PLAINS SUBDIVISION  
 (TO BE DEDICATED) BY THE  
 CITY OF WILLIAMSBURG, VIRGINIA,  
 THE SUBJECT PARCELS BEING IN THE NAME OF:

1. LAWRENCE TYNES, JR.

INSTRUMENT #970001211, TAX PARCEL 491-A-2 AND 491-A-7 CONTAINING 226,796 SQ FT  
 OR 5.20652 ACRES LESS & EXCEPT PARCEL 491-A-3 (REFERENCE DB 28 PG 223)  
 CITY OF WILLIAMSBURG, VIRGINIA.

2. EMMANUEL TYLER

JCC WB 7 PG 585 (REFERENCE DB 28 PG 223) TAX PARCEL 491-A-3 BEING AN  
 UNQUANTIFIABLE CONVEYANCE FROM TAX PARCEL 491-A-7 CITY OF WILLIAMSBURG, VIRGINIA.



**Dewberry & Davis, Inc.**  
 A Dewberry Company  
 9081 MAYLAND DRIVE SUITE 201  
 Richmond, Virginia 23233  
 (804) 290-7057 FAX (804) 290-7028  
 WWW.DEWBERRY.COM

Architects  
 Engineers  
 Planners  
 Surveyors

DRAWING: R981108\PLAT\491-A-7REV1.DWG  
 DATE: 03-06-2001 REVISED 9-16-2002  
 SCALE: 1" = 100'  
 SHEET 1 OF 1