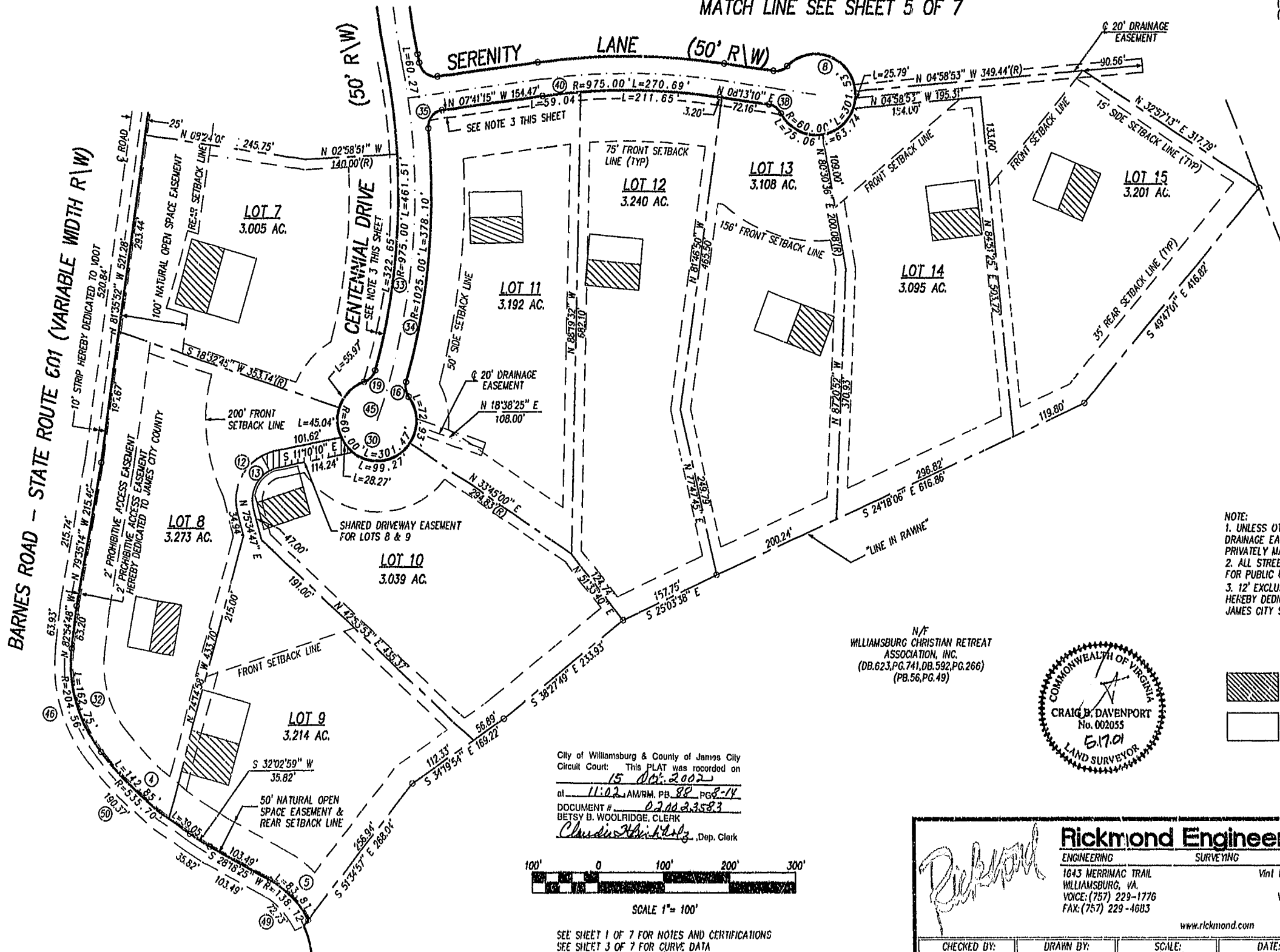


SUBDIVISION PLAT OF THE RETREAT PHASE ONE, SECTION THREE STONEHOUSE DISTRICT, JAMES CITY COUNTY, VIRGINIA SCALE = 1"=100' MAY 17, 2001

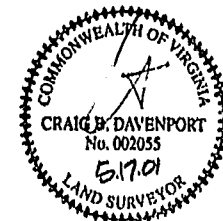
N/F WILLIAMSBURG CHRISTIAN RETREAT ASSOCIATION, INC. (DB.351,PG.704) (DB.304,PG.701)

MATCH LINE SEE SHEET 5 OF 7

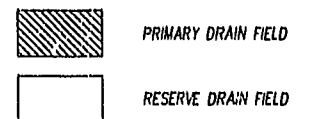


NOTE: 1. UNLESS OTHERWISE NOTED ALL DRAINAGE EASEMENTS ARE TO BE PRIVATELY MAINTAINED. 2. ALL STREETS ARE DEDICATED FOR PUBLIC USE. 3. 12' EXCLUSIVE EASEMENT HEREBY DEDICATED TO THE JAMES CITY SERVICE AUTHORITY.

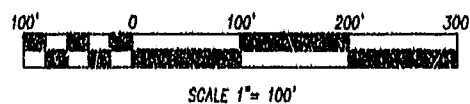
N/F WILLIAMSBURG CHRISTIAN RETREAT ASSOCIATION, INC. (DB.623,PG.741, DB.592,PG.266) (PB.56,PG.49)



LEGEND



City of Williamsburg & County of James City Circuit Court: This PLAT was recorded on 15 Oct 2002 at 11:02 AM/PM, PB. 88, PG. 14 DOCUMENT # 020023583 BETSY B. WOOLRIDGE, CLERK Claudia H. Hartz, Dep. Clerk



SEE SHEET 1 OF 7 FOR NOTES AND CERTIFICATIONS SEE SHEET 3 OF 7 FOR CURVE DATA

SHEET 4 OF 7

Rickmond Engineering, Inc. ENGINEERING SURVEYING LAND PLANNING 1643 MERRIMAC TRAIL WILLIAMSBURG, VA VOICE: (757) 229-1776 FAX: (757) 229-4603 Vint Hill • P.O. Box 861647 WARRENTON, VA VOICE: (540) 349-7730 FAX: (540) 349-7731 www.rickmond.com

CHECKED BY: CBD	DRAWN BY: CBD	SCALE: 1"=100'	DATE: 5/17/01	JOB NO. 01117
-----------------	---------------	----------------	---------------	---------------