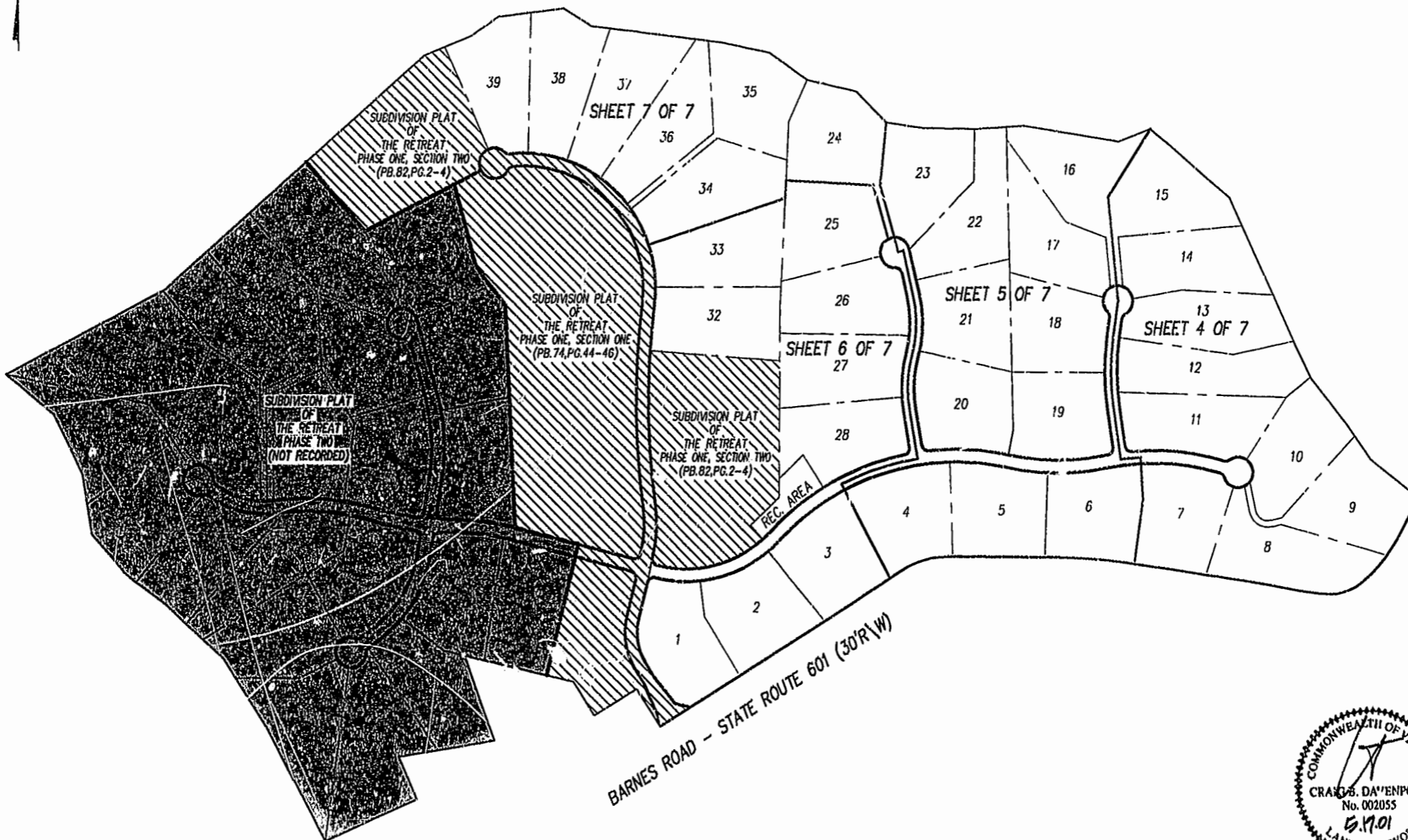


SUBDIVISION PLAT  
OF  
**THE RETREAT**  
PHASE ONE, SECTION THREE  
STONEHOUSE DISTRICT, JAMES CITY COUNTY, VIRGINIA  
SCALE = N.T.C. MAY 17, 2001



SUBDIVISION PLAT  
OF  
THE RETREAT  
PHASE TWO  
(NOT RECORDED)

SUBDIVISION PLAT  
OF  
THE RETREAT  
PHASE ONE, SECTION TWO  
(PB.82,PG.2-4)

SUBDIVISION PLAT  
OF  
THE RETREAT  
PHASE ONE, SECTION ONE  
(PB.74,PG.44-46)

SUBDIVISION PLAT  
OF  
THE RETREAT  
PHASE ONE, SECTION TWO  
(PB.82,PG.2-4)

BARNES ROAD - STATE ROUTE 601 (30'R) (W)



SHEET 2 OF 7

City of Williamsburg & County of James City  
Circuit Court: This PLAT was recorded on  
15 OCT 2002  
at 11:02 AM, PB. 88 PG. 2-14  
DOCUMENT # 020023583  
BETSY B. WOOLRIDGE, CLERK  
*Claudia M. Kelly*, Dep. Clerk

SEE SHEET 1 OF 7 FOR NOTES AND CERTIFICATIONS

*Rickmond* **Rickmond Engineering, Inc.**  
ENGINEERING SURVEYING LAND PLANNING  
1643 MERRIMAC TRAIL  
WILLIAMSBURG, VA. Vin Hill • P.O. Box 861647  
VOICE: (757) 229-1776 FAX: (540) 349-7730  
FAX: (757) 229-4683 FAX: (540) 349-7731  
www.rickmond.com

CHECKED BY: CBD	DRAWN BY: CBD	SCALE: NTS	DATE: 5/17/01	JOB NO. 01117
--------------------	------------------	---------------	------------------	------------------