

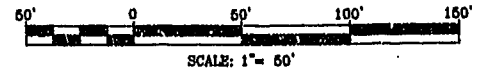
CURVE DATA

CURVE	DELTA ANGLE	RADIUS	ARC LENGTH	TANGENT	CHORD LENGTH	CHORD BEARING
C1	03°10'45"	407.38'	22.63'	11.32'	22.63'	N 59°00'22" E
C2	90°00'00"	25.00'	39.27'	25.00'	35.36'	S 12°24'59" W
C3	41°44'13"	50.00'	36.42'	19.08'	35.62'	S 07°45'22" W
C4	70°31'44"	25.00'	30.77'	17.68'	28.87'	S 22°09'07" W
C5	90°00'00"	25.00'	39.27'	25.00'	35.36'	N 77°35'01" W
C6	250°31'44"	50.00'	218.63'	70.71'	81.65'	S 67°50'53" E
C7	56°24'17"	50.00'	49.22'	26.81'	47.26'	S 56°49'37" W
C8	53°07'48"	50.00'	46.36'	25.00'	44.72'	N 68°24'20" W
C9	46°07'37"	50.00'	40.25'	21.29'	39.18'	N 34°21'11" E
C10	53°07'48"	50.00'	46.36'	25.00'	44.72'	N 15°16'32" W

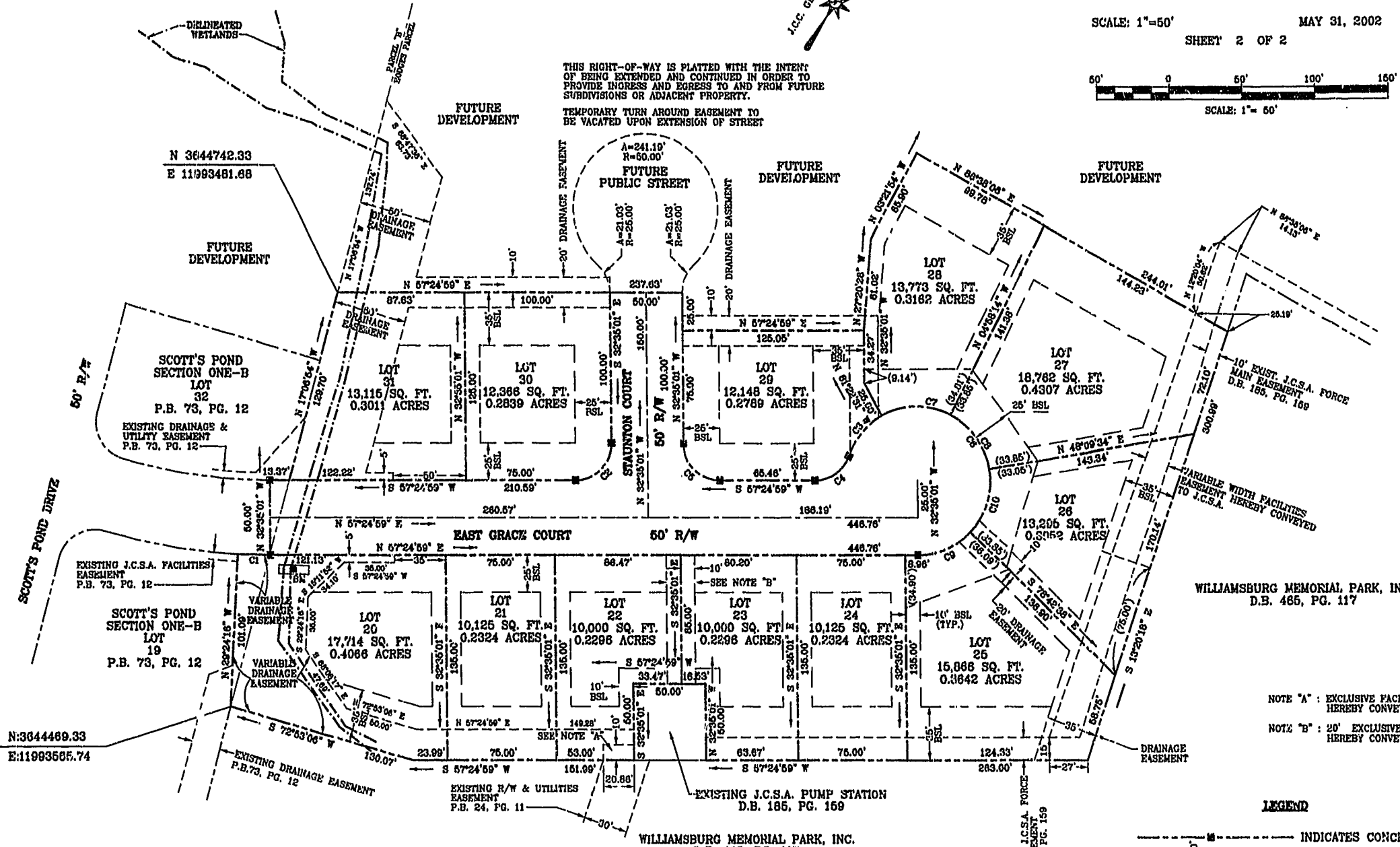
**SCOTT'S POND**  
**SECTION ONE-C**  
**POWHATAN DISTRICT**  
**JAMES CITY COUNTY, VIRGINIA**

ADPA A.D. POTTS & ASSOCIATES, INC.  
 11624 JEFFERSON AVENUE  
 NEWPORT NEWS, VIRGINIA 23601  
 PHONE: (757)-695-4810

SCALE: 1"=50' MAY 31, 2002  
 SHEET 2 OF 2



THIS RIGHT-OF-WAY IS PLATTED WITH THE INTENT OF BEING EXTENDED AND CONTINUED IN ORDER TO PROVIDE INGRESS AND EGRESS TO AND FROM FUTURE SUBDIVISIONS OR ADJACENT PROPERTY.  
 TEMPORARY TURN AROUND EASEMENT TO BE VACATED UPON EXTENSION OF STREET



NOTE "A": EXCLUSIVE FACILITIES EASEMENT HEREBY CONVEYED TO J.C.S.A.  
 NOTE "B": 20' EXCLUSIVE FACILITIES EASEMENT HEREBY CONVEYED TO J.C.S.A.

LEGEND

- INDICATES CONCRETE MONUMENT
- INDICATES BUILDING SETBACK LINE
- INDICATES DISTANCE ALONG PROPERTY LINE TO FRONT SETBACK LINE
- INDICATES DRAINAGE EASEMENT

STATE OF VIRGINIA COUNTY OF JAMES CITY  
 IN THE CLERK'S OFFICE OF THE CIRCUIT COURT OF THE  
 COUNTY OF JAMES CITY THIS 10 DAY OF October  
 2002, THE MAP SHOWN HEREON WAS PRESENTED AND ADMITTED  
 TO THE RECORD AS THE LAW DIRECTS. @ 10:06 AM  
 TESTE: Betsy B. Woolridge CLERK  
 PLAT BOOK 88 PAGE 142

City of Williamsburg & County of James City  
 Circuit Court: This PLAT was recorded on  
10 OCT 2002  
 at 10:06 AM AM/PM: 88 PG 142  
 DOCUMENT # 02.0023404  
Betsy B. Woolridge, Clerk

⊙ BENCHMARK: CHISELED SQUARE ON TOP OF HEADWALL  
 15' SOUTH OF R/W OF EAST GRACK COURT,  
 NORTHWEST PORTION OF LOT 20  
 ELEV.=74.71'

