

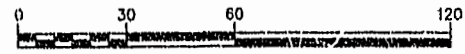
87 PAGE 100

#020023322

SUBDIVISION PLAT IRONBOUND VILLAGE PHASE I

JAMES CITY COUNTY, BERKELEY DISTRICT
COMMONWEALTH OF VIRGINIA
SCALE: 1" = 30' DATE: 2/28/02
SHEET 2 OF 3

GRAPHIC SCALE



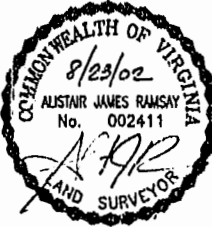
(IN FEET)
1 inch = 30 ft.



Engineers • Planners • Surveyors
Landscape Architects • Environmental Consultants

4029 Ironbound Road
Suite 100
Williamsburg, VA 23188
Tel. (757) 253-2975
Fax (757) 229-0049
Email: lmdg@landmarkdkg.com

5544 Greenwich Road
Suite 200
Virginia Beach, VA 23462
Tel. (757) 473-2000
Fax (757) 497-7933
Email: lmdg@landmarkdkg.com



City of Williamsburg & County of James City
Circuit Court: This PLAT was recorded on
9 Oct 2002
at 2:31 AM/PM, P.B. 19 PG 23-10
DOCUMENT # 020023322
BETSY B. WOOLRIDGE, CLERK
Betsy Woolridge, Dep. Clerk

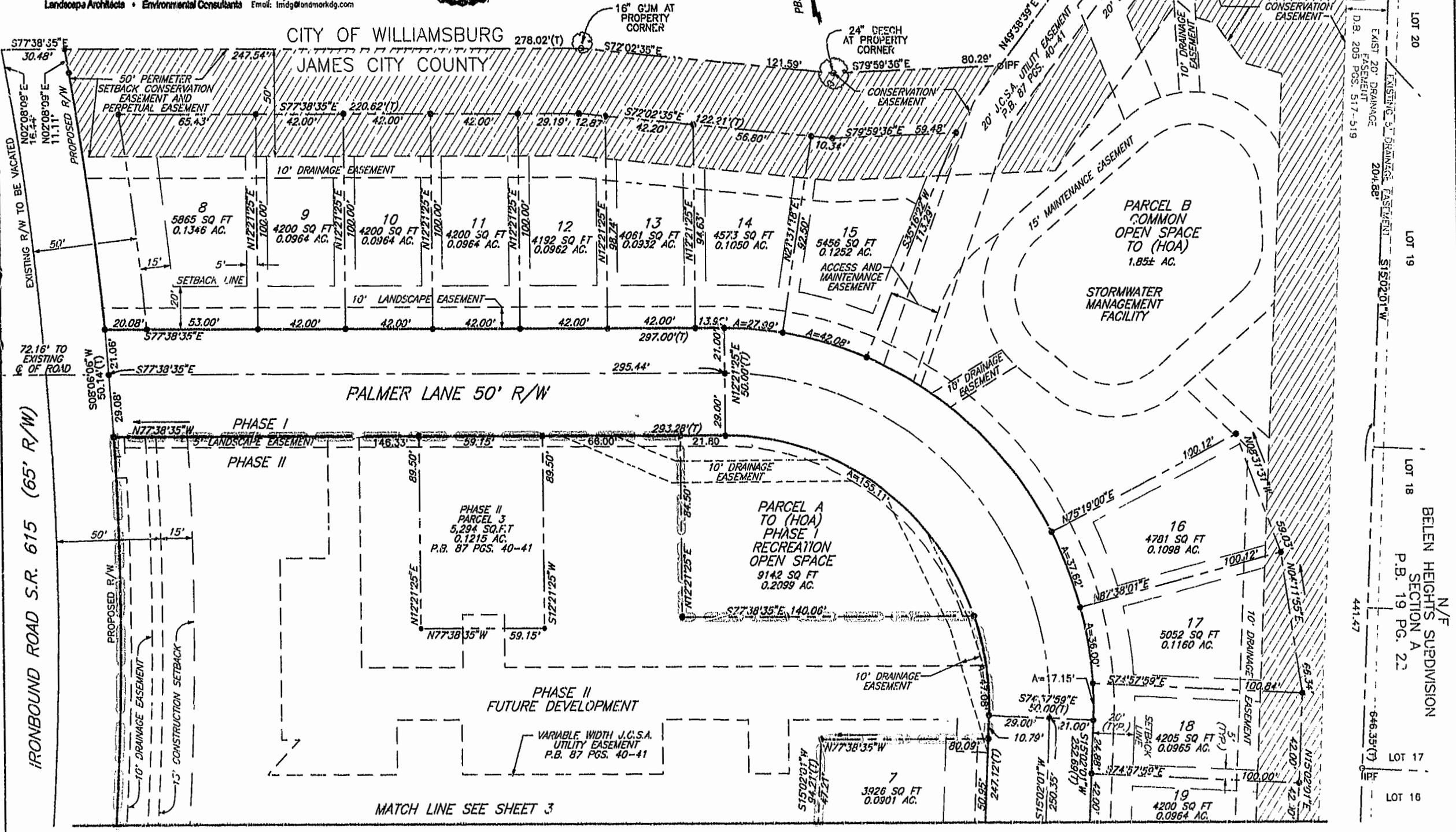
PERMANENT EASEMENT
D.B. 162 PG 225

CL. STREAM
PER P.B. 164
PG. 757

N/F
L.W. WALES SUBDIVISION
SECTION 2
D.B. 88 PG. 18

N/F
W.H. LEWIS DEVELOPMENT
P.B. 19 PG. 23

PERMANENT SEWER
EASEMENT D.B. 163
PGS. 517-519



IRONBOUND ROAD S.R. 615 (65' R/W)

PALMER LANE 50' R/W

MATCH LINE SEE SHEET 3

N/F
BELEN HEIGHTS SUBDIVISION
SECTION A
P.B. 19 PG. 22

LOT 17
LOT 18