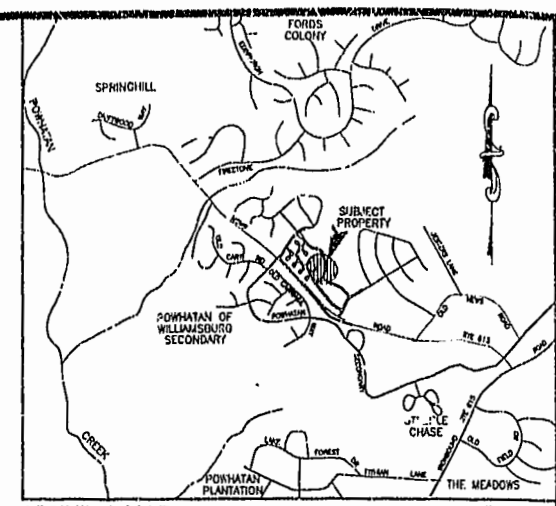
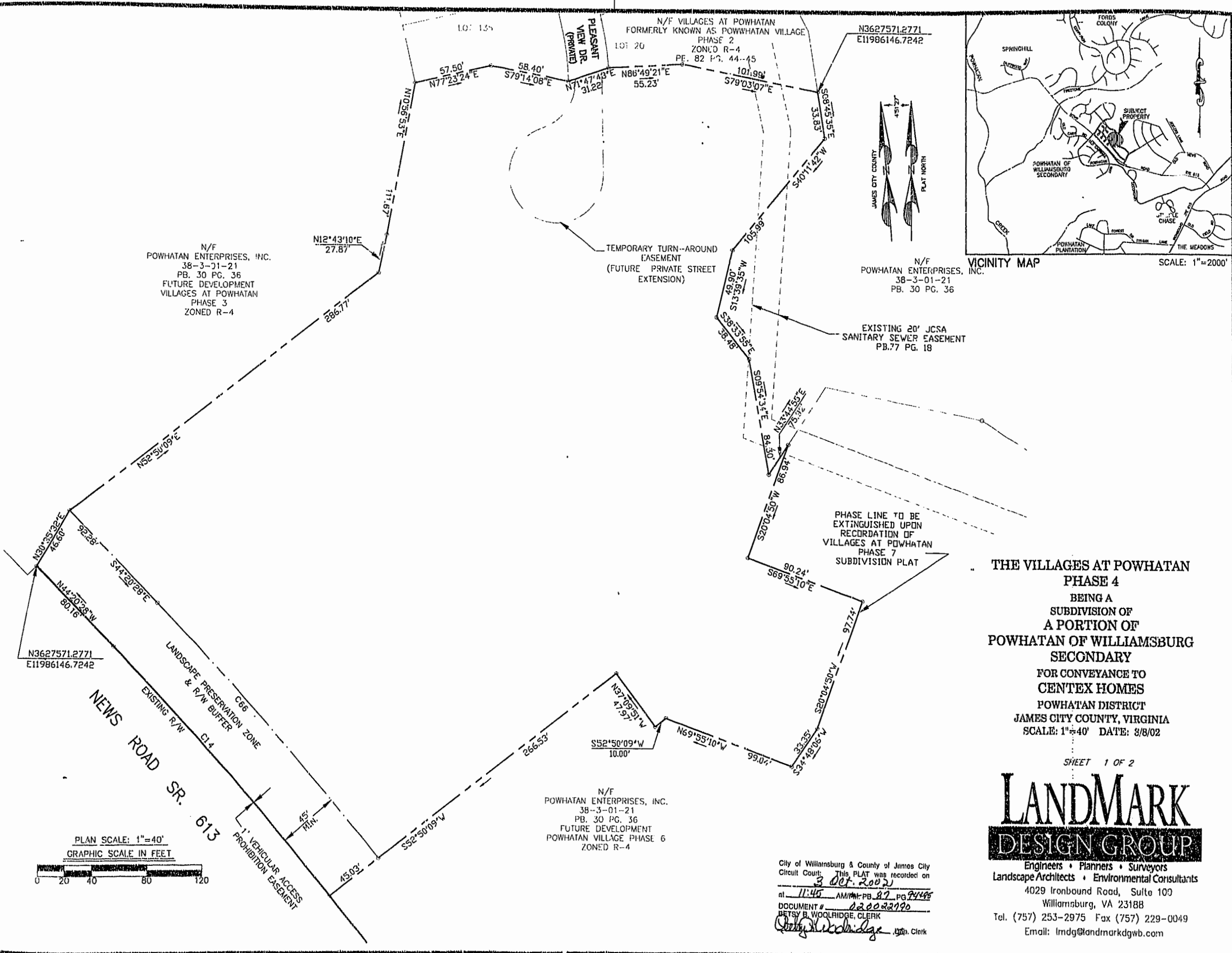


070022790 87 PAGE 94



N/F
POWHATAN ENTERPRISES, INC.
38-3-01-21
PB. 30 PG. 36
FUTURE DEVELOPMENT
VILLAGES AT POWHATAN
PHASE 3
ZONED R-4

N/F VILLAGES AT POWHATAN
FORMERLY KNOWN AS POWHATAN VILLAGE
PHASE 2
ZONED R-4
PE. 82 PG. 44-45

N/F
POWHATAN ENTERPRISES, INC.
38-3-01-21
PB. 30 PG. 36

EXISTING 20' JCSA
SANITARY SEWER EASEMENT
PB.77 PG. 18

PHASE LINE TO BE
EXTINGUISHED UPON
RECORDATION OF
VILLAGES AT POWHATAN
PHASE 7
SUBDIVISION PLAT

**THE VILLAGES AT POWHATAN
PHASE 4**
BEING A
SUBDIVISION OF
A PORTION OF
POWHATAN OF WILLIAMSBURG
SECONDARY
FOR CONVEYANCE TO
CENTEX HOMES
POWHATAN DISTRICT
JAMES CITY COUNTY, VIRGINIA
SCALE: 1"=40' DATE: 8/8/02

SHEET 1 OF 2

**LANDMARK
DESIGN GROUP**

Engineers • Planners • Surveyors
Landscape Architects • Environmental Consultants
4029 Ironbound Road, Suite 100
Williamsburg, VA 23188
Tel. (757) 253-2975 Fax (757) 229-0049
Email: lmdg@landmarkdgb.com

N/F
POWHATAN ENTERPRISES, INC.
38-3-01-21
PB. 30 PG. 36
FUTURE DEVELOPMENT
POWHATAN VILLAGE PHASE 6
ZONED R-4

City of Williamsburg & County of James City
Circuit Court: This PLAT was recorded on
3 Oct. 2002
at 11:45 AM/PM: PB. 87 PG. 74-75
DOCUMENT # 020022790
BETSY B. WOOLRIDGE, CLERK
Betsy Woolridge Jm. Clerk

PLAN SCALE: 1"=40'
GRAPHIC SCALE IN FEET



DRAWN BY: LFV
CHKD. BY: SAR

PROJ. NO.: 1780041-151.12
DWG. NO.: 13109W