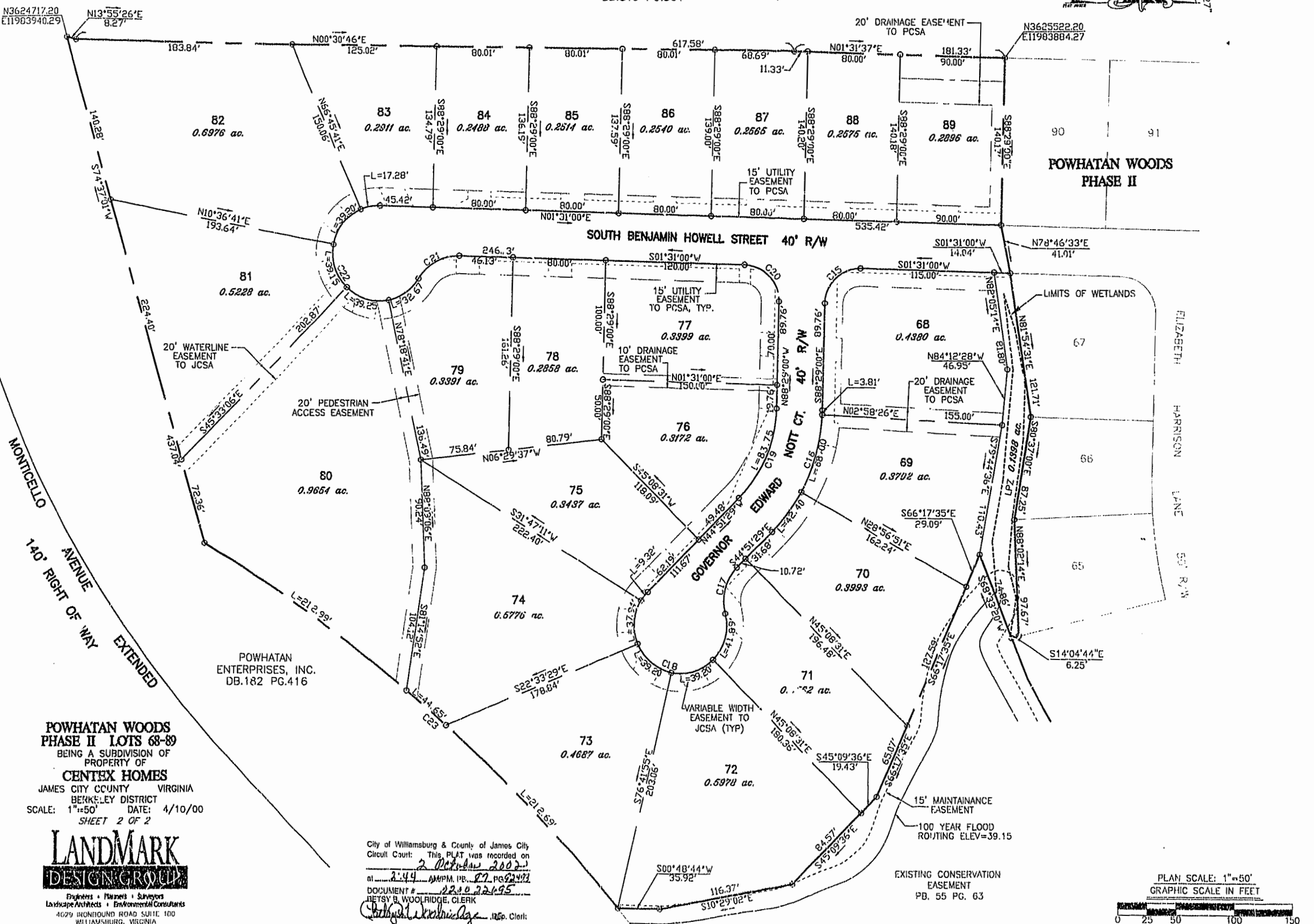


N/F
POWHATAN CROSSING, INC.
ZONED PUD-R
DB.819 PG.564

LEGEND:
-o- IRON MARKER SET
-■- MONUMENT FOUND
-●- IRON MARKER FOUND



POWHATAN WOODS
PHASE II

SOUTH BENJAMIN HOWELL STREET 40' R/W

GOVERNOR EDWARD NOTT CT. 40' R/W

MONTICELLO AVENUE 140' RIGHT OF WAY EXTENDED

LIMITS OF WETLANDS

ELIZABETH HARRISON LANE 50' R/W

POWHATAN WOODS
PHASE II LOTS 68-89
BEING A SUBDIVISION OF
PROPERTY OF
CENTEX HOMES
JAMES CITY COUNTY VIRGINIA
BERKELEY DISTRICT
SCALE: 1"=50' DATE: 4/10/00
SHEET 2 OF 2

POWHATAN ENTERPRISES, INC.
DB.182 PG.416

LANDMARK
DESIGN GROUP

Engineers • Planners • Surveyors
Landscape Architects • Environmental Consultants
4029 IRONBOUND ROAD SUITE 100
WILLIAMSBURG, VIRGINIA
(757) 253-2973 FAX: (757) 229-0079

City of Williamsburg & County of James City
Circuit Court: This PLAT was recorded on
2 October 2002
at 2:44 AM PM, PB. 27 PG. 22492
DOCUMENT # 2210 22695
BETSY B. WOOLRIDGE, CLERK
Betsy Woolridge, Reg. Clerk

15' MAINTAINANCE EASEMENT
100 YEAR FLOOD ROUTING ELEV=39.15
EXISTING CONSERVATION EASEMENT
PB. 55 PG. 63

PLAN SCALE: 1"=50'
GRAPHIC SCALE IN FEET

