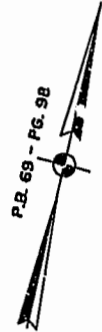


#021689

87 PAGE 74

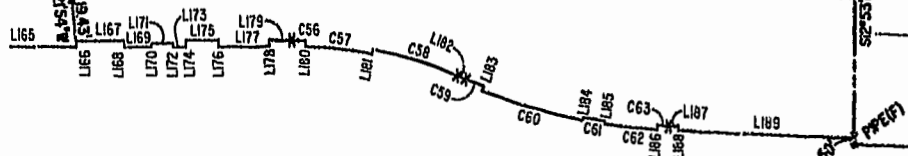
JAMES CITY COUNTY TP 33-3-01-29  
NOW OR FORMERLY  
GARY E. & CATHY L. NESTER  
D.B.619 P.683

JAMES CITY COUNTY TP 33-3-01-24  
NOW OR FORMERLY  
GOLDEN KNIGHTS, INC.  
D.B.568 P.316



MATCH LINE  
SEE SHEET 3

ADDITIONAL LAND



TP 252-01-00-010

TP 252-01-00-009

MARK II INVESTMENTS LTD.  
D.B.130 P.671

TP 252-01-00-008

N78°27'47"E 321.22'

CLAIBORNE DRIVE  
VAR. WIDTH UTILITY & INGRESS/EGRESS ESMT.  
COMMON AREA

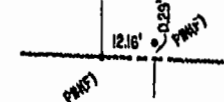
S78°27'47"W 408.02'

COMMON AREA - PHASE ONE

S78°27'39"W 320.66'

TP 282-05-00-001  
NOW OR FORMERLY  
CHELSEA GCA REALTY PARTNERSHIP, L.P.  
D.B.113 P.693

DETAIL  
N.T.S.



SEE SHEET 3

RAVEN TERRACE  
VAR. WIDTH UTILITY & INGRESS/EGRESS ESMT.  
COMMON AREA

ADDITIONAL LAND

TP 282-04-00-001  
NOW OR FORMERLY  
CHELSEA GCA REALTY PARTNERSHIP, L.P.  
D.B.106 P.407

TP 282-08-00-001  
NOW OR FORMERLY  
752 L.L.C.  
INST. #980305

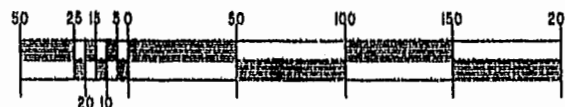
U.S. RTE. 60  
RICHMOND ROAD

P.B. 69 - PG. 98

City of Williamsburg & County of James City  
Circuit Court: This PLAT was recorded on  
September 17, 2002  
at 10:27 AM/PM, P.B. 87 PG. 23-77  
DOCUMENT # 021689  
BETSY B. WOOLRIDGE, CLERK  
C. C. Shaw, Fore Dep. Clerk

EXHIBIT "A"  
CLAIBORNE  
(A CONDOMINIUM COMMUNITY)  
PHASE SIX

GRAPHIC SCALE: 1" = 50'



CITY OF WILLIAMSBURG, VIRGINIA		SIZE	CONTRACT NO	DISK/BOX	FILENAME	REV.
Hassel & Folkes, P.C.	C	1146/18		PH-6-BLDG-BDNG		
Engineers Surveyors Planners Chesapeake, VA. 23320 (757) 547-8631						
SCALE: 1" = 50'		DATE: 08/21/02		SHEET 2 of 5		

A-1520

A-1520