

EXIST. 20' JAMES CITY COUNTY SERVICE AUTHORITY SAN. SEWER EASEMENT AS SHOWN IN AS-BUILT LOCATION. D.B. 141 - PG. 388

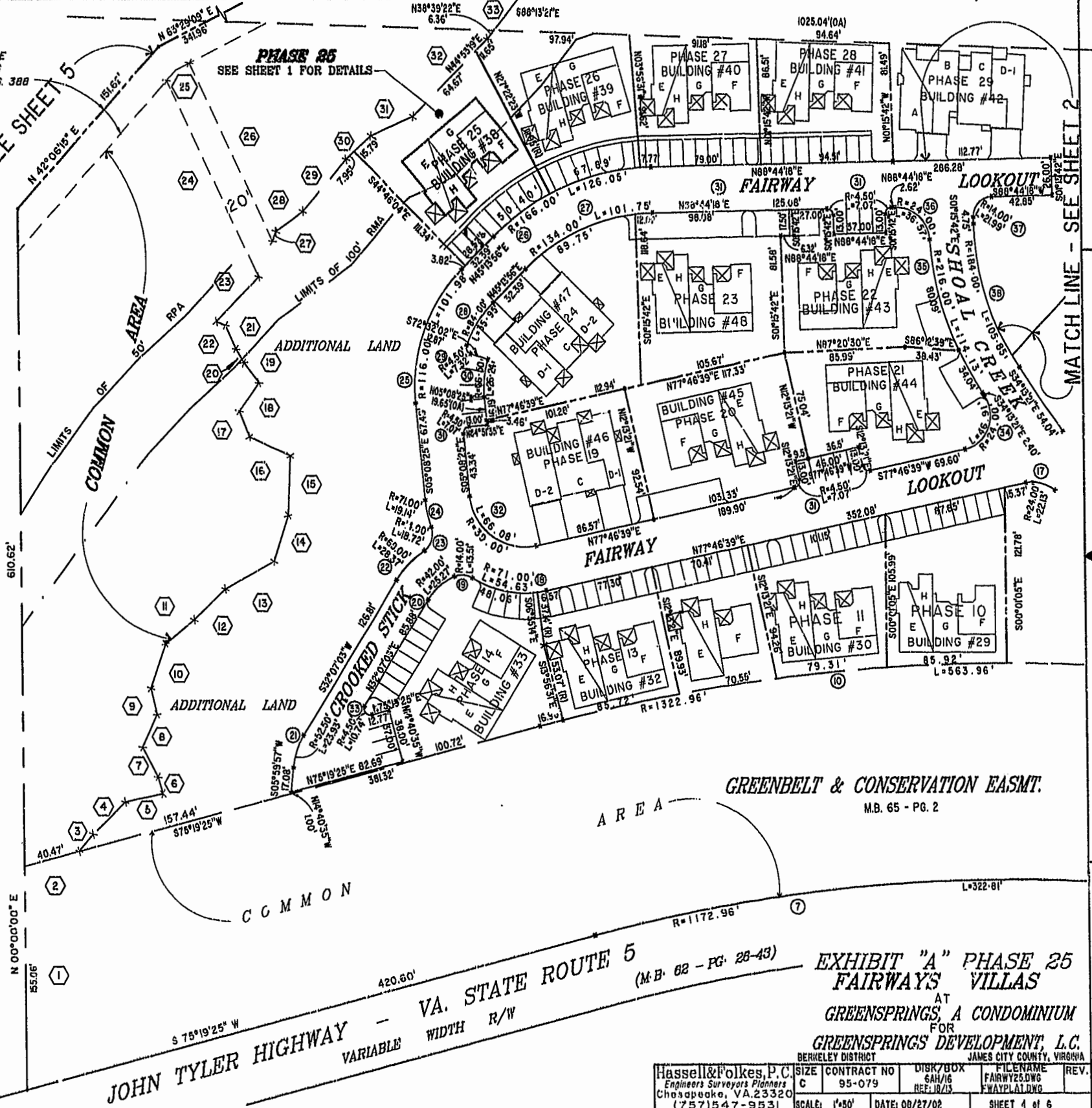


MATCH LINE - SEE SHEET 5

MATCH LINE - SEE SHEET 2

46-1-01-0-0001
"GREENSPRINGS PLANTATION"
(DB 322, PG 204)

City of Williamsburg & County of James City
Circuit Court: This PLAT was recorded on
September 16, 2002
at 1:47 AM PM, 1997 PG 61-64
DOCUMENT # 020021197
BETSY B. WOODRIDGE, CLERK
C. Kevin Felt Dep. Clerk



JOHN TYLER HIGHWAY - VA. STATE ROUTE 5
VARIABLE WIDTH R/W
(M.B. 82 - PG. 28-43)

EXHIBIT "A" PHASE 25
FAIRWAYS VILLAS
AT
GREENSPRINGS, A CONDOMINIUM
FOR
GREENSPRINGS DEVELOPMENT, L.C.
BERKELEY DISTRICT JAMES CITY COUNTY, VIRGINIA

Hassell & Folkes, P.C. Engineers Surveyors Planners Chesapeake, VA. 23320 (757) 547-9531	SIZE C	CONTRACT NO 95-079	DISK/BOX 6AH/16 REF: 10/13	FILE NAME FAIRWAY25.DWG FWAYPLAT.DWG	REV. SHEET 4 of 6
SCALE: 1"=50'	DATE: 00/27/02				