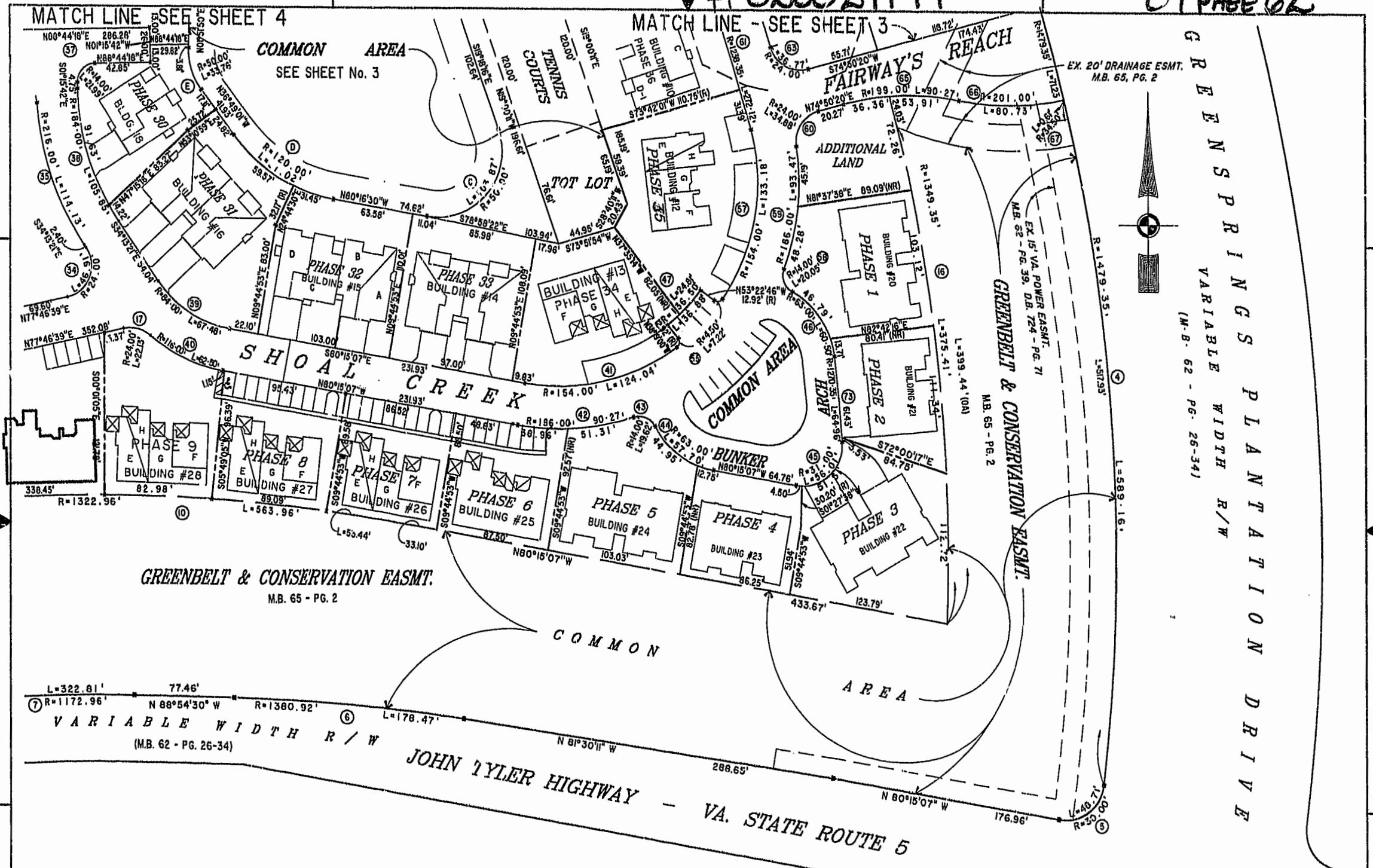


#020021197

87 PAGE 62



GREENBELT & CONSERVATION EASMT.  
EX. 15' VA. POWER EASMT. M.B. 62 - PG. 26-34  
EX. 20' DRAINAGE ESMT. M.B. 65, PG. 2  
EX. 15' VA. POWER EASMT. M.B. 62 - PG. 26-34  
EX. 15' VA. POWER EASMT. M.B. 65 - PG. 2  
EX. 15' VA. POWER EASMT. M.B. 65 - PG. 2

City of Williamsburg & County of James City  
Circuit Court: This PLAT was recorded on  
September 16, 2002  
at 1:47 AM (P.M.) P.B.# 82 P.G.# 1-166  
DOCUMENT # 020021197  
BETSY B. WOOLRIDGE, CLERK  
C. New Deal, Dep. Clerk

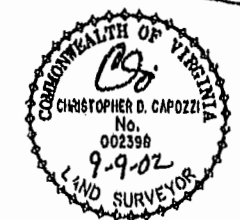


EXHIBIT "A" PHASE 25  
FAIRWAYS VILLAS  
AT  
GREENSPRINGS, A CONDOMINIUM  
FOR  
GREENSPRINGS DEVELOPMENT, L.C.  
BERKELEY DISTRICT JAMES CITY COUNTY, VIRGINIA

Hassell & Polkes, P.C. Engineers Surveyors Planners Chesapeake, VA 23320 (757) 547-9531	SIZE: C CONTRACT NO: 95-079	DISK/BOX: GAH/16 REF: 18/13	FILENAME: FAIRWAY25.DWG E:\AYLAT.DWG	REV.
SCALE: 1"=50'	DATE: 08/27/02	SHEET 2 of 6		